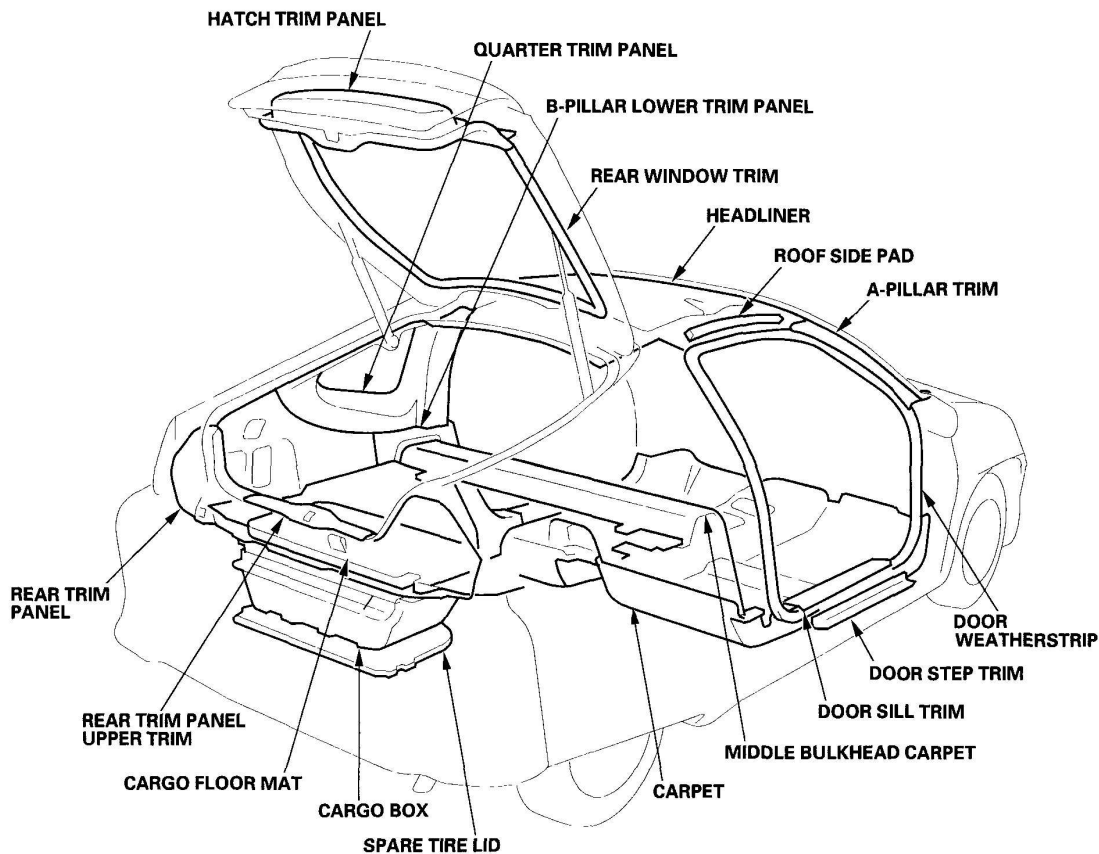


2000-06 ACCESSORIES & EQUIPMENT

Interior Trim - Insight

COMPONENT LOCATION INDEX



G03682585

Fig. 1: Identifying Interior Trim Components Location
Courtesy of AMERICAN HONDA MOTOR CO., INC.

TRIM REMOVAL/INSTALLATION - DOOR AREAS

Special Tools Required

KTC trim tool set SOJATP2014 *

* Available through the American Honda Tool and Equipment Program; call 888-424-6857

NOTE:

- **Put on gloves to protect your hands.**
- **Use the appropriate tool from the KTC trim tool set to avoid damage when prying components.**
- **Take care not to bend or scratch the trim and panels.**

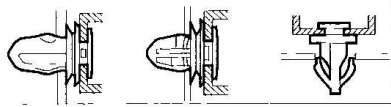
1. Remove the trim as shown. Use the numbered sequence on the A-pillar trim.
2. Install the trim in the reverse order of removal, and note these items:
 - Check for damaged or stress-whitened clips, and replace them with new ones.
 - Before reinstalling the door weatherstrip, clean the body bonding surface with alcohol.
 - Apply clear sealant (Cemedine P/N 08712-0004, or equivalent) into the groove of the door weatherstrip all the way around. Attach the door weatherstrip with sealant and adhesive tape.
 - Push the clips into place securely.

2006 Honda Insight

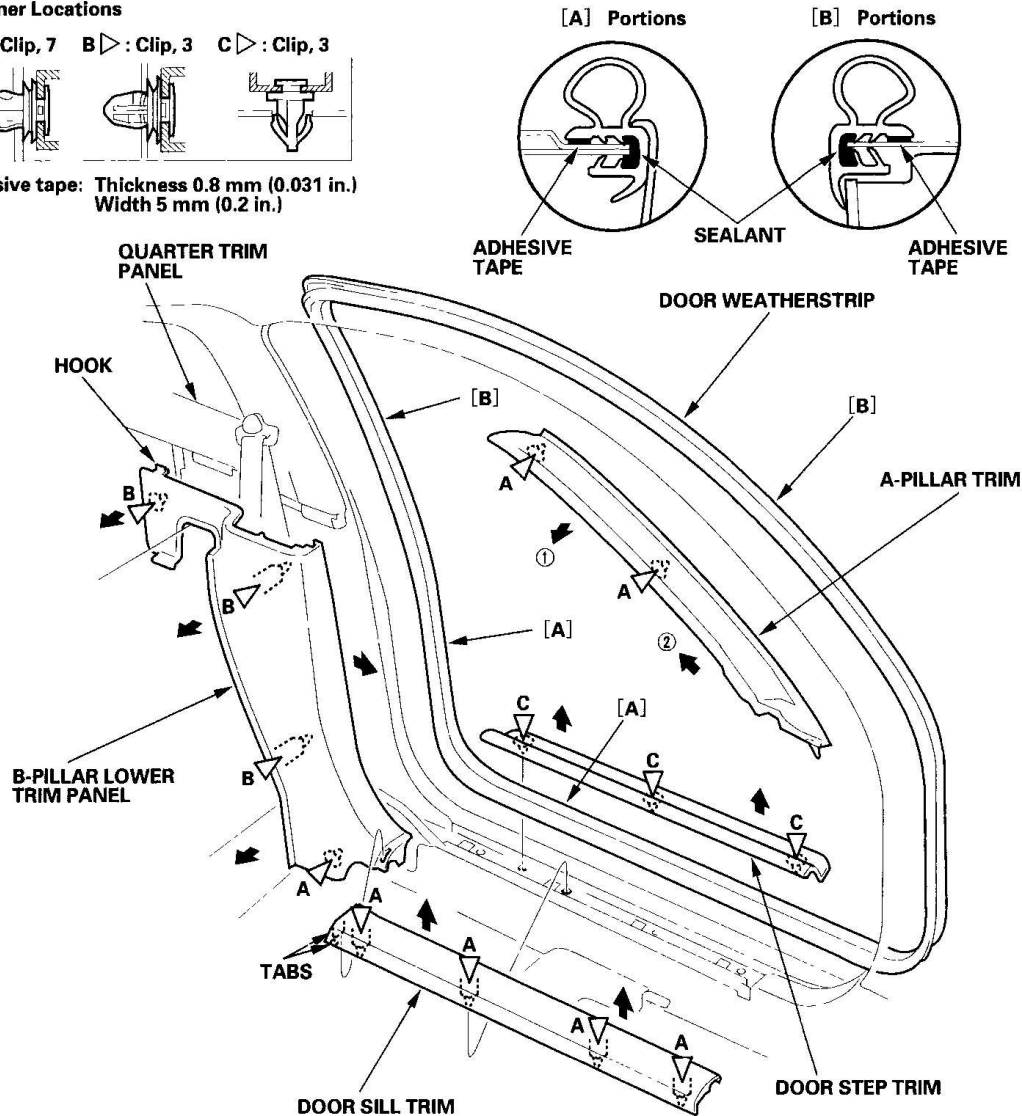
2000-06 ACCESSORIES & EQUIPMENT Interior Trim - Insight

Fastener Locations

A ▷ : Clip, 7 B ▷ : Clip, 3 C ▷ : Clip, 3



Adhesive tape: Thickness 0.8 mm (0.031 in.)
Width 5 mm (0.2 in.)



G03682586

Fig. 2: Removing Trim - Door Areas

Courtesy of AMERICAN HONDA MOTOR CO., INC.

TRIM REMOVAL/INSTALLATION - REAR QUARTER PANEL AREA

Special Tools Required

KTC trim tool set SOJATP2014 *

* Available through the American Honda Tool and Equipment Program; call 888-

424-6857

NOTE:

- Put on gloves to protect your hands.
- Use the appropriate tool from the KTC trim tool set to avoid damage when prying components.
- Take care not to bend or scratch the trim and panels.
- When removing the hatch support strut, you will need to open or close the hatch by hand.
- Remove the quarter trim panel and rear side trim panel as an assembly.

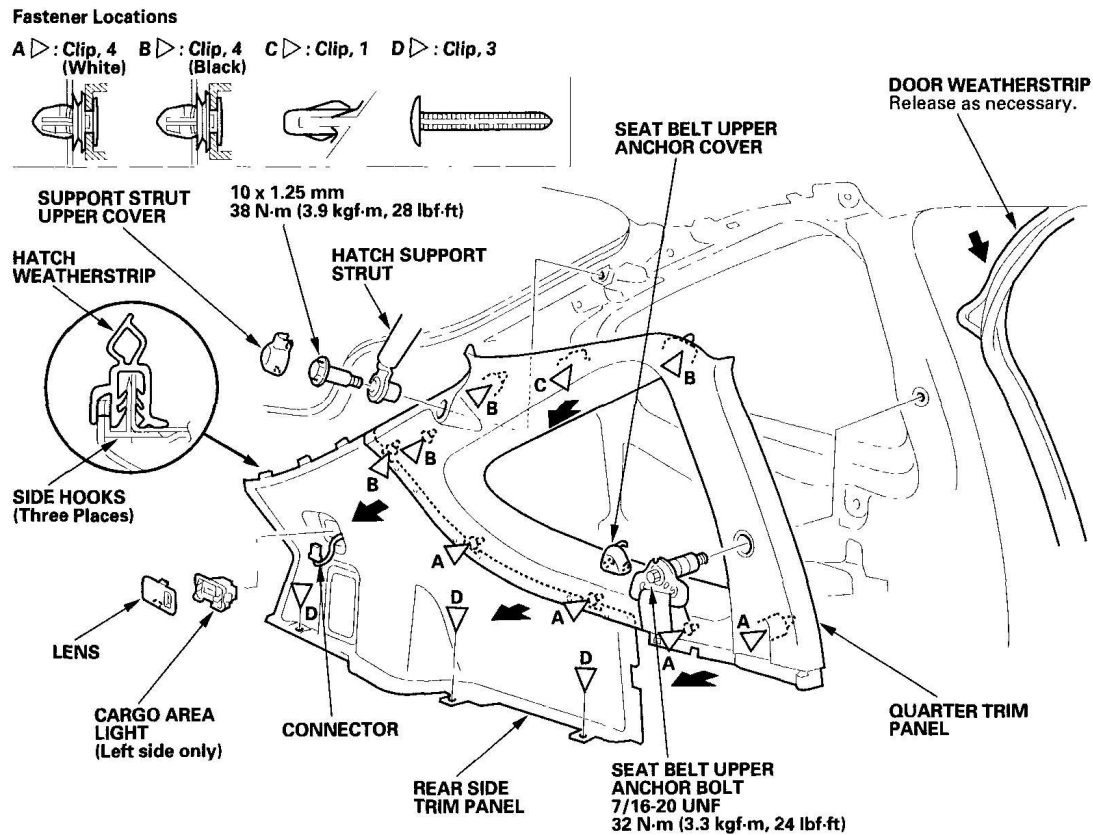
1. Remove these items:

- B-pillar lower trim panel (see **TRIM REMOVAL/INSTALLATION - DOOR AREAS**)
- Door weatherstrip, as necessary (see **TRIM REMOVAL/INSTALLATION - DOOR AREAS**)
- Cargo floor mat and rear trim panel, as necessary
- Seat belt upper anchor
- Hatch support strut, body side

2. Remove the trim as shown.

3. Install the trim in the reverse order of removal, and note these items:

- Check for damaged or stress-whitened clips, and replace them with new ones.
- Apply liquid thread lock to the anchor bolt before reinstallation.
- Before installing the anchor bolt, make sure there are no twists or kinks in the seat belt.
- Push the clips into place securely.



G03682587

Fig. 3: Removing Trim - Rear Quarter Panel Area And Torque Specifications

Courtesy of AMERICAN HONDA MOTOR CO., INC.

TRIM REMOVAL/INSTALLATION - CARGO AREA

Special Tools Required

KTC trim tool set SOJATP2014 *

* Available through the American Honda Tool and Equipment Program; call 888-424-6857

NOTE:

- Put on gloves to protect your hands.
- Use the appropriate tool from the KTC trim tool set to avoid damage when prying components.

- **Take care not to bend or scratch the trim and panels.**
- **Remove the child seat tether anchor (see CHILD SEAT TETHER ANCHOR REMOVAL/INSTALLATION).**

1. Remove the trim as shown.
2. Install the trim in the reverse order of removal, and note these items:
 - Check for damaged or stress-whitened clips, and replace them with new ones.
 - Push the clips into place securely.

2006 Honda Insight

2000-06 ACCESSORIES & EQUIPMENT Interior Trim - Insight

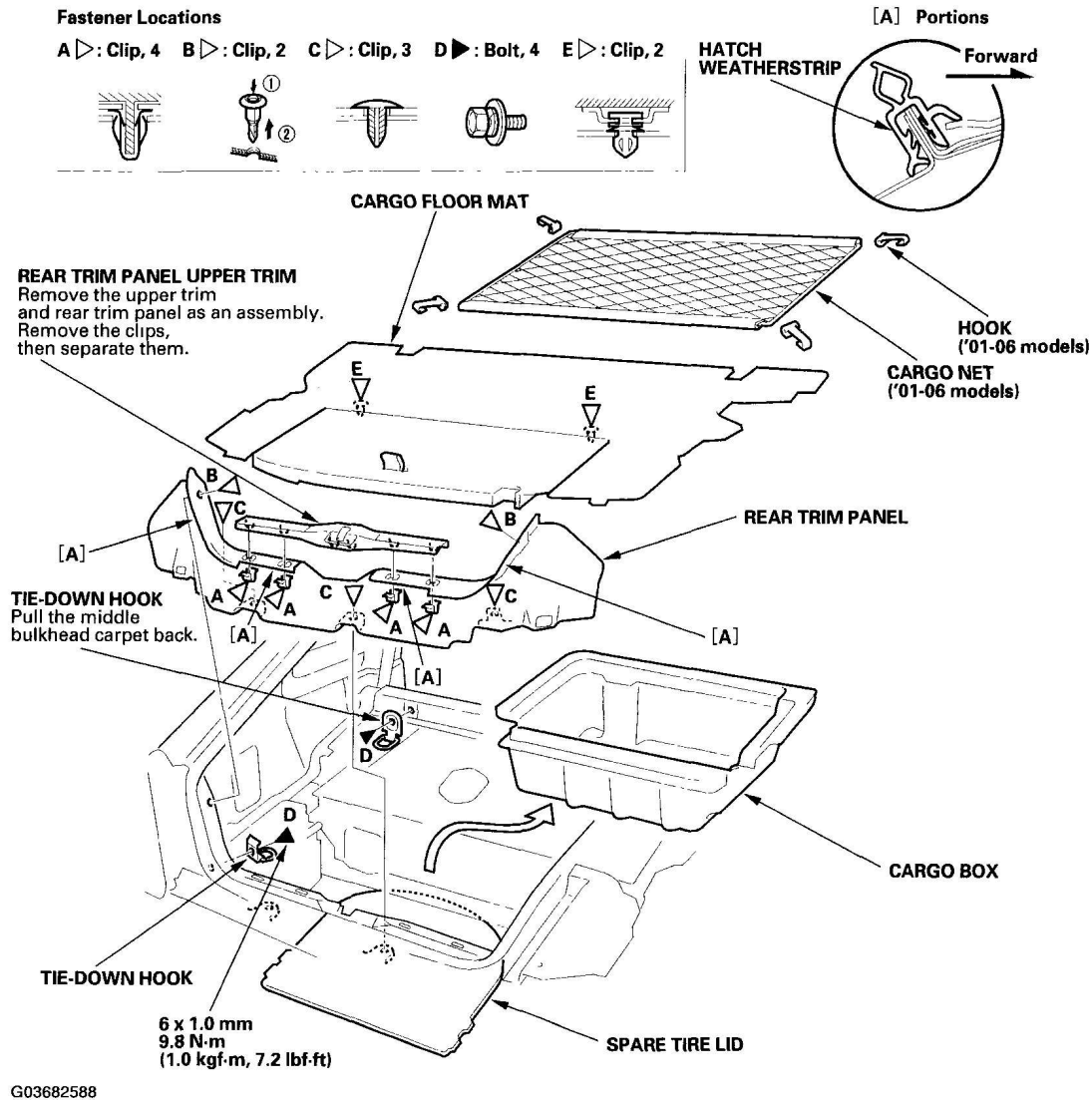


Fig. 4: Removing Trim - Cargo Area And Torque Specifications
Courtesy of AMERICAN HONDA MOTOR CO., INC.

TRIM REMOVAL/INSTALLATION - HATCH AREA

Special Tools Required

KTC trim tool set SOJATP2014 *

* Available through the American Honda Tool and Equipment Program; call 888-424-6857

NOTE:

- **Put on gloves to protect your hands.**
- **Use the appropriate tool from the KTC trim tool set to avoid damage when prying components.**
- **Take care not to bend or scratch the trim and panels.**

1. Remove the trim as shown.

2. Install the trim in the reverse order of removal, and note these items:

- Check for damaged or stress-whitened clips, and replace them with new ones.
- If the old trim is to be reinstalled, scrape off the double-sided adhesive tape, then clean the trim and seal surfaces with alcohol. Attach the new double-sided adhesive tape to the seal, and install the seals to both sides of the trim.
- Before reinstalling the trim, clean the body bonding surface with alcohol.
- Locate the painted alignment mark on the rear window trim. Align the painted mark with the alignment tab in the center of the hatch, and install the trim all the way around facing in the direction shown.
- Make sure the upper rear window defogger connectors are plugged in properly.
- Push the clips into place securely.

2006 Honda Insight

2000-06 ACCESSORIES & EQUIPMENT Interior Trim - Insight

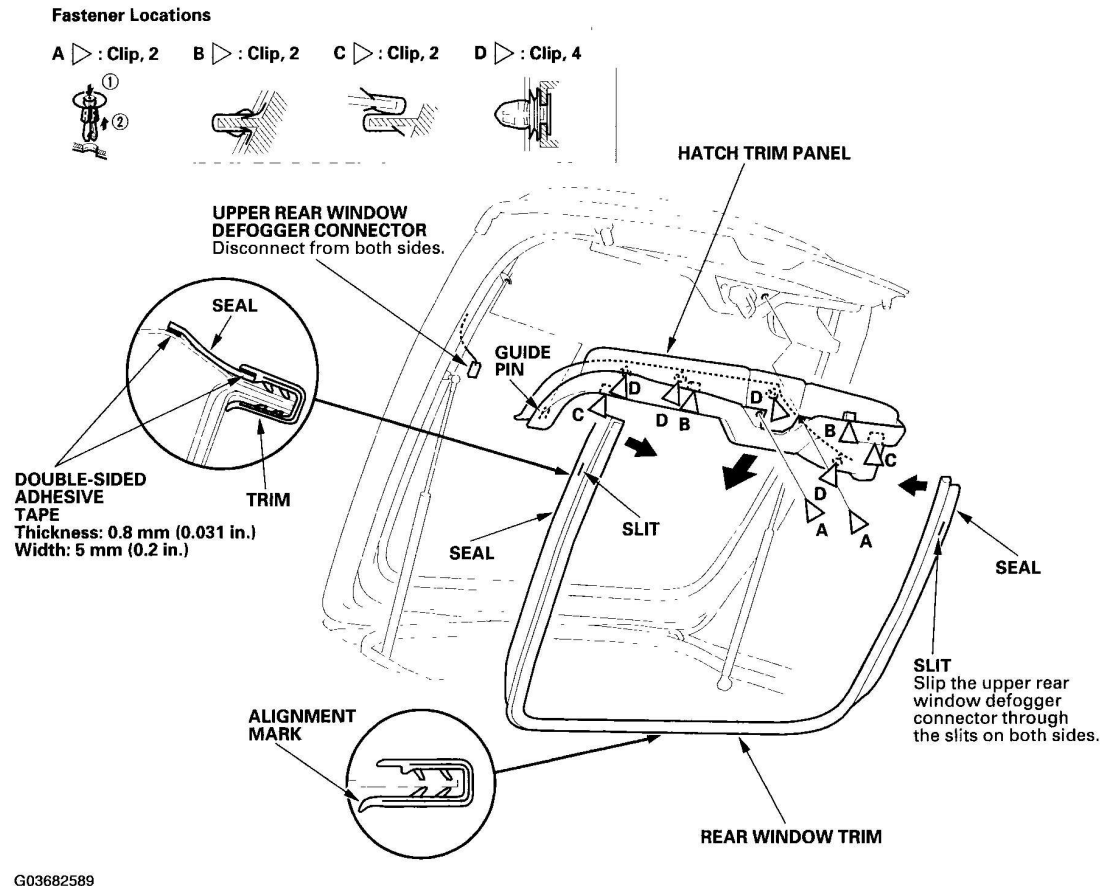


Fig. 5: Removing Trim - Hatch Area

Courtesy of AMERICAN HONDA MOTOR CO., INC.

HEADLINER REMOVAL/INSTALLATION

Special Tools Required

KTC trim tool set SOJATP2014 *

* Available through the American Honda Tool and Equipment Program; call 888-424-6857

NOTE:

- Put on gloves to protect your hands.
- Use the appropriate tool from the KTC trim tool set to avoid damage when prying components.

- **Take care not to bend and scratch the headliner.**
- **Be careful not to damage the dashboard or other interior pieces.**
- **Use a clip remover to remove the roof side pad clips.**

1. Remove these items:

- A-pillar trim, both sides (see **TRIM REMOVAL/INSTALLATION - DOOR AREAS**)
- Spotlight (see **CEILING LIGHT/SPOTLIGHT TEST/REPLACEMENT**)
- Door weatherstrip, both sides as necessary (see **TRIM REMOVAL/INSTALLATION - DOOR AREAS**)
- Seat belt upper anchor, both sides
- Hatch support strut, both sides
- Quarter trim panel, roof portion as necessary (see **TRIM REMOVAL/INSTALLATION - REAR QUARTER PANEL AREA**)

2. Remove the headliner as shown.

3. Install the headliner in the reverse order of removal, and note these items:

- Check for damaged or stress-whitened clips, and replace them with new ones.
- When reinstalling the headliner through the hatch opening, be careful not to fold or bend it. Also, be careful not to scratch the body.
- Check that both sides of the headliner are securely attached to the trim panel.

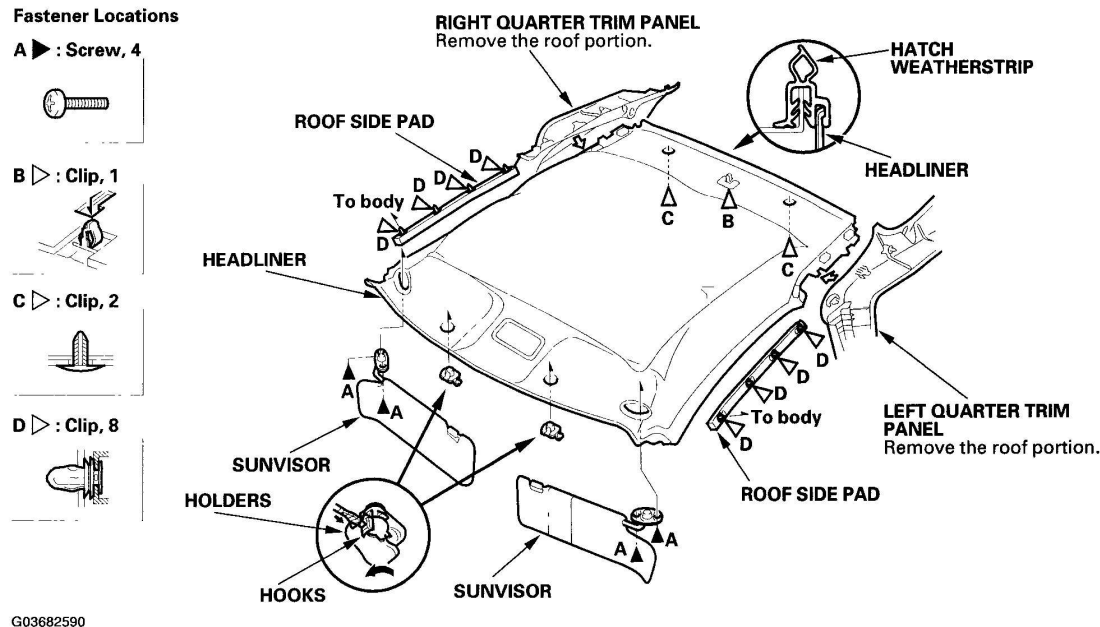


Fig. 6: Removing Headliner

Courtesy of AMERICAN HONDA MOTOR CO., INC.

CARPET REPLACEMENT

SRS components are located in this area. Review the SRS component locations (see **COMPONENT LOCATION INDEX**) and the precautions and procedures (see **PRECAUTIONS AND PROCEDURES**) before performing repairs or service.

NOTE:

- Put on gloves to protect your hands.
- Take care not to damage, wrinkle or twist the carpet.
- Be careful not to damage the dashboard or other interior trim pieces.
- Before disconnecting the negative cable from the battery, make sure you have the anti-theft code for the radio, then write down the customer's radio station presets.
- Disconnect the negative cable from the battery, and wait at least 3 minutes before beginning work.
- Use a T30 Torx bit to remove the SRS unit mounting

bolts and ground bolt.

1. Remove these items, then remove the carpet in the numbered sequence:

- Seats (see **SEAT REMOVAL/INSTALLATION**)
- B-pillar lower trim panel, both sides (see **TRIM REMOVAL/INSTALLATION - DOOR AREAS**)
- Front console (see **FRONT CONSOLE REMOVAL/INSTALLATION**) and rear console (see **REAR CONSOLE REMOVAL/INSTALLATION**)
- Instrument panel (see **INSTRUMENT PANEL REMOVAL/INSTALLATION**) and gauge assembly (see **GAUGE ASSEMBLY REPLACEMENT**)
- Glove box (see **GLOVE BOX REMOVAL/INSTALLATION**)

2. Install the carpet in the reverse order of removal, and note these items:

- Make sure the wire harness is routed correctly and clipped into place.
- Make sure the connectors are plugged in properly.
- Check for damaged or stress-whitened clips, and replace them with new ones.
- Reconnect the negative cable to the battery.
- Enter the anti-theft code for the radio, then enter the audio presets.
- Reset the clock.
- Do the ECM idle learn procedure (see **ECM IDLE LEARN PROCEDURE**).

2006 Honda Insight

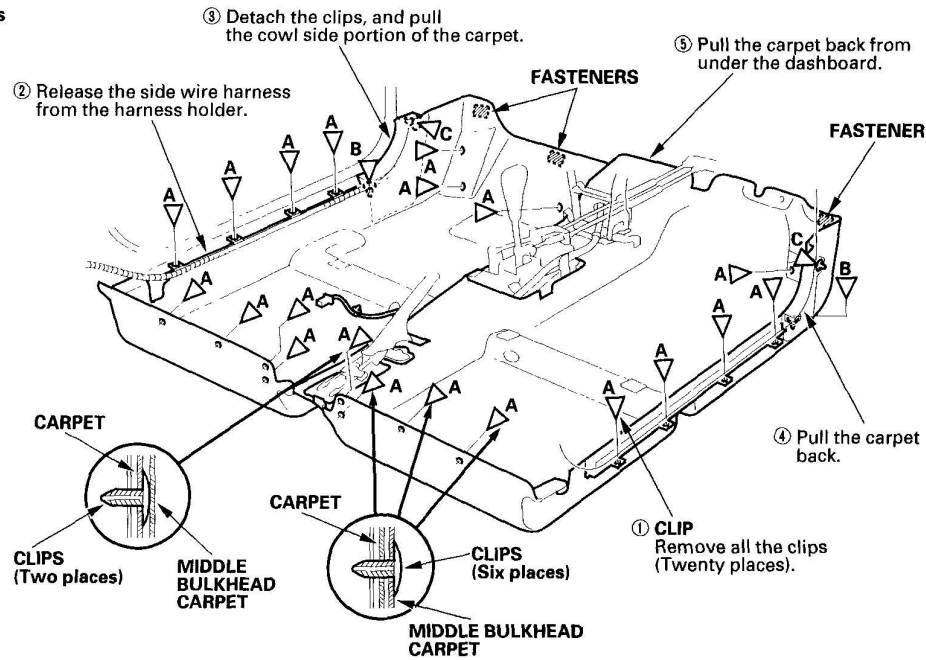
2000-06 ACCESSORIES & EQUIPMENT Interior Trim - Insight

Fastener Locations

A ▷ : Clip, 20

B ▷ : Clip, 2

C ▷ : Clip, 2



G03682591

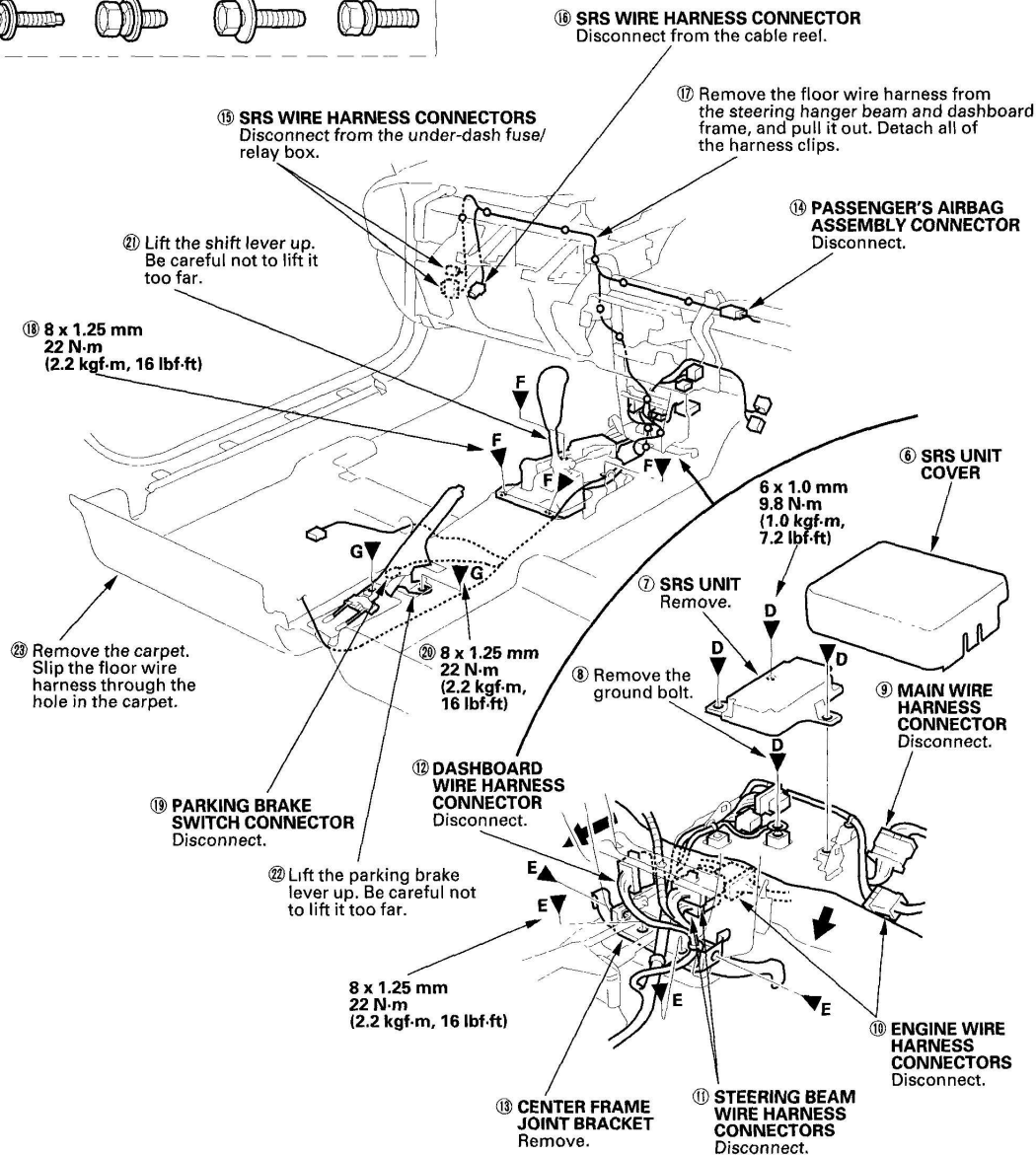
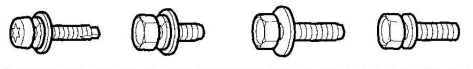
Fig. 7: Identifying Removal Sequence Of Carpet (1 Of 2)
Courtesy of AMERICAN HONDA MOTOR CO., INC.

2006 Honda Insight

2000-06 ACCESSORIES & EQUIPMENT Interior Trim - Insight

Fastener Locations

D ▶ : Bolt, 4 E ▶ : Bolt, 4 F ▶ : Bolt, 4 G ▶ : Bolt, 2



G03682592

Fig. 8: Identifying Removal Sequence Of Carpet (2 Of 2)
Courtesy of AMERICAN HONDA MOTOR CO., INC.

MIDDLE BULKHEAD CARPET REPLACEMENT

Special Tools Required

KTC trim tool set SOJATP2014 *

* Available through the American Honda Tool and Equipment Program; call 888-424-6857

NOTE:

- Put on gloves to protect your hands.
- Use the appropriate tool from the KTC trim tool set to avoid damage when prying components.
- Take care not to damage, wrinkle or twist the carpets.
- Be careful not to damage the dashboard or other interior trim pieces.

1. Remove these items:

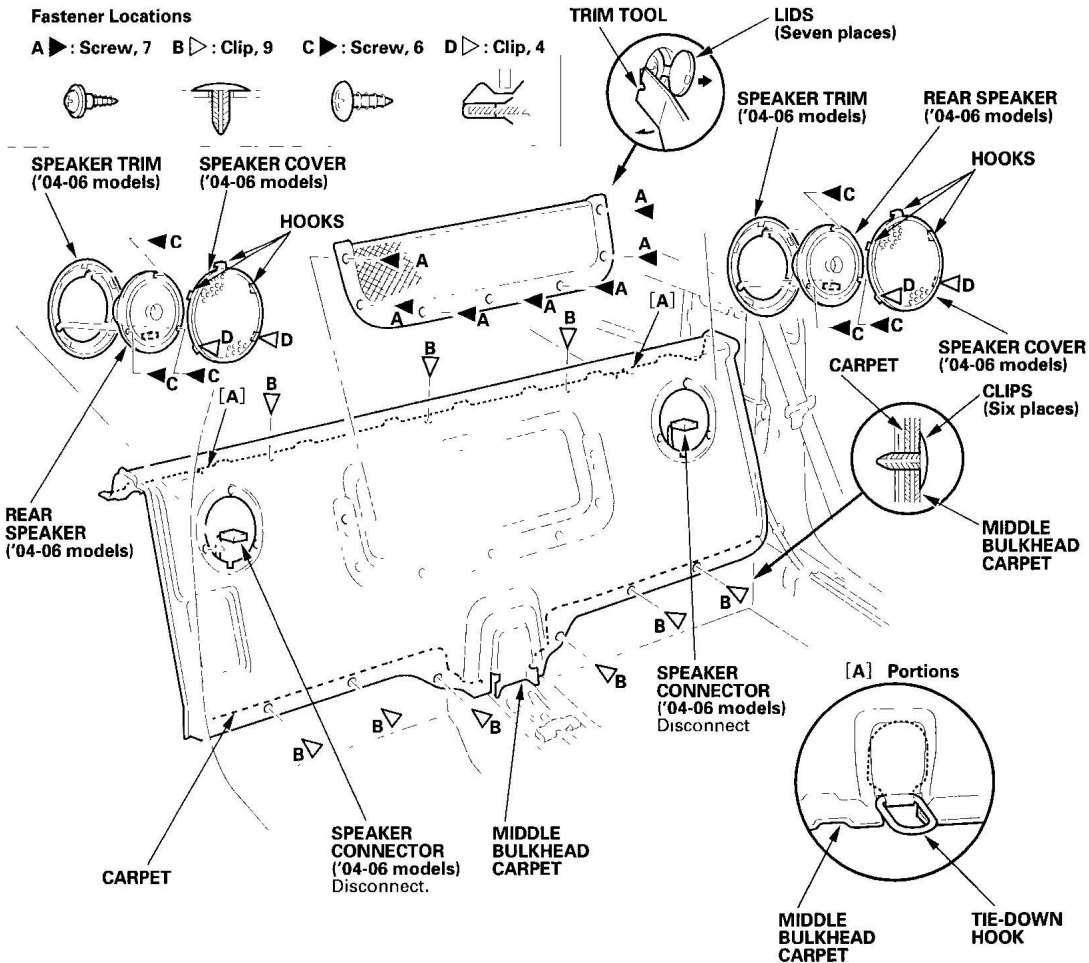
- B-pillar lower trim panel, both sides (see **TRIM REMOVAL/INSTALLATION - DOOR AREAS**)
- Rear console (see **REAR CONSOLE REMOVAL/INSTALLATION**)
- Cargo floor mat, as necessary

2. Remove the middle bulkhead carpet as shown.

3. Install the carpet in the reverse order of removal, and check for damaged or stress-whitened clips, and replace them with new ones.

2006 Honda Insight	
--------------------	--

2000-06 ACCESSORIES & EQUIPMENT Interior Trim - Insight



G03682593

Fig. 9: Removing Middle Bulkhead Carpet
Courtesy of AMERICAN HONDA MOTOR CO., INC.