

2006 Honda Insight
2000-06 ACCESSORIES & EQUIPMENT Frame - Insight

2000-06 ACCESSORIES & EQUIPMENT

Frame - Insight

FRONT DAMPER BASE BEAM AND BATTERY BOX REPLACEMENT

NOTE: Take care not to scratch the body.

1. Remove the battery and related brackets.
2. Remove the front damper base beam and battery box as shown.
3. Install the front damper base beam and battery box in the reverse order of removal.

2006 Honda Insight

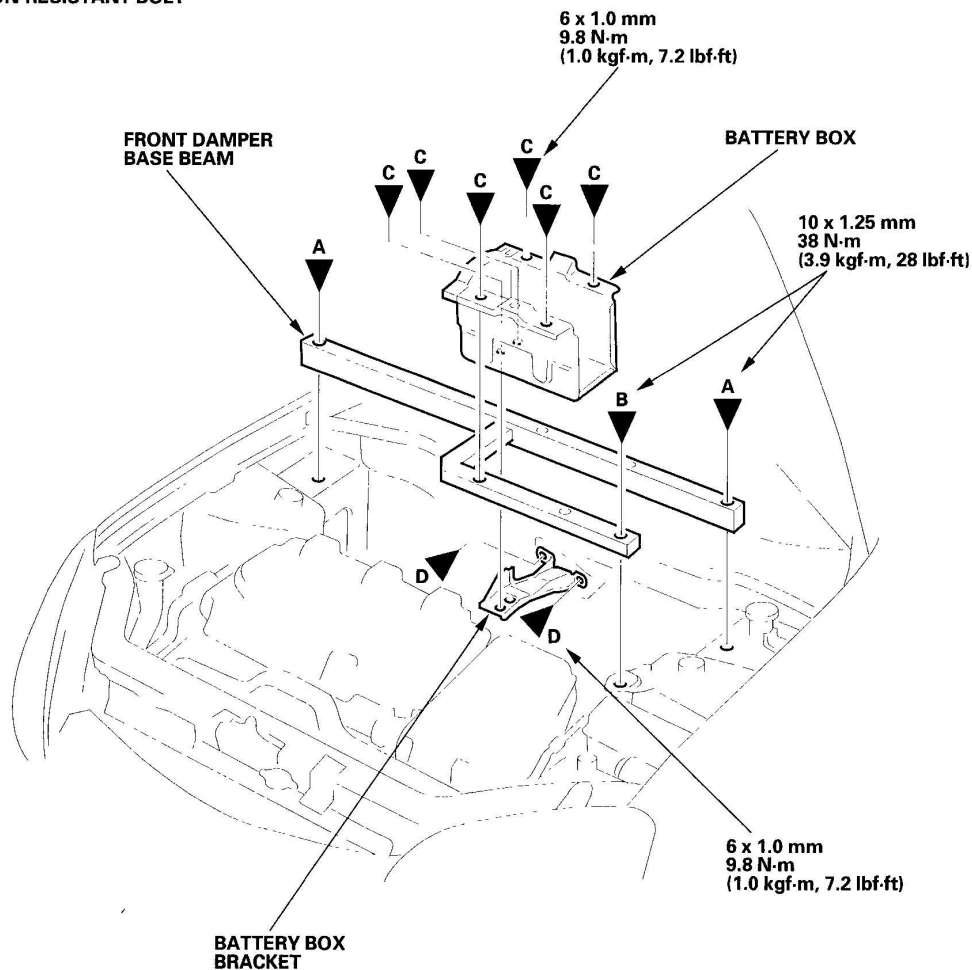
2000-06 ACCESSORIES & EQUIPMENT Frame - Insight

Fastener Locations

A ► : Bolt*, 2 B ► : Bolt*, 1 C ► : Bolt*, 6 D ► : Bolt*, 2



*: CORROSION-RESISTANT BOLT



G03682645

Fig. 1: Installing Front Damper Base Beam And Battery Box With Torque Specifications

Courtesy of AMERICAN HONDA MOTOR CO., INC.

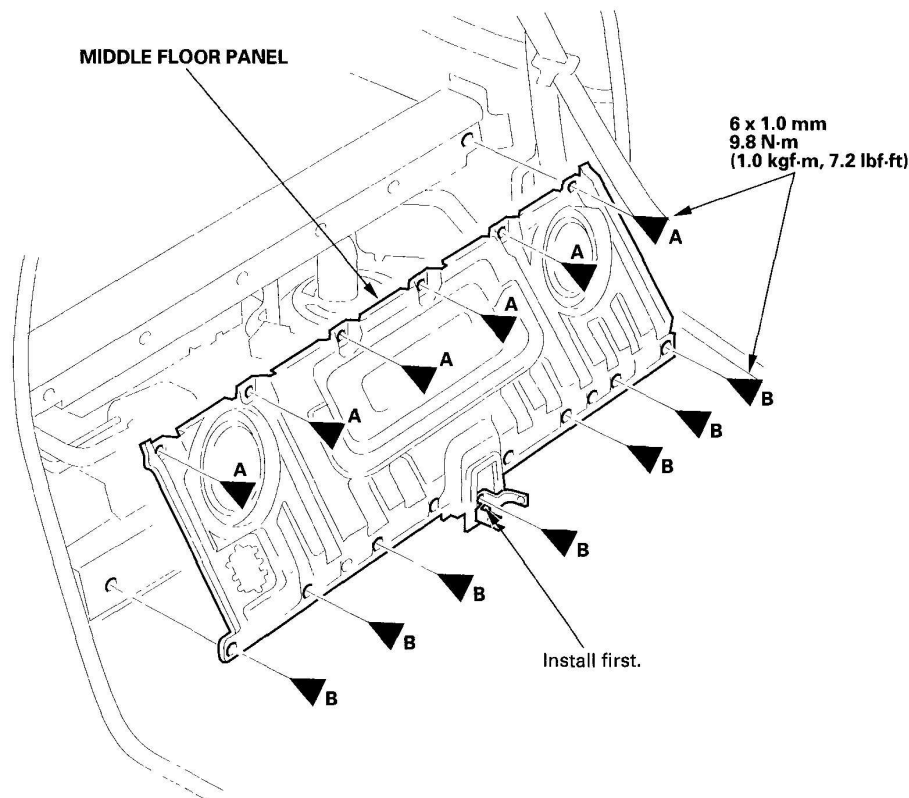
MIDDLE FLOOR PANEL REPLACEMENT

NOTE: IMA wires are located in this area. Make sure you read the Service Precautions (see SERVICE PRECAUTIONS) before performing repairs or service.

NOTE:

- Put on gloves to protect your hands.
- Take care not to scratch the seats and interior trim.

1. Remove the middle bulkhead carpet (see **MIDDLE BULKHEAD CARPET REPLACEMENT**).
2. Remove the middle floor panel as shown.
3. Install the middle floor panel in the reverse order of removal, and to align the panel, first install the B bolt in the middle of the panel.

Fastener Locations**A ▶ : Bolt, 6 B ▶ : Bolt, 7**

G03682646

Fig. 2: Removing Middle Bulkhead Carpet And Torque Specifications
Courtesy of AMERICAN HONDA MOTOR CO., INC.

IMA CASE REPLACEMENT

NOTE: IMA wires are located in this area. Make sure you read the **Service Precautions (see SERVICE PRECAUTIONS)** before performing repairs or service.

NOTE:

- Put on gloves to protect your hands.
- Take care not to scratch the body.

1. Remove these items:

- Battery module (see **BATTERY MODULE REMOVAL/INSTALLATION**)
- PCU (see **POWER CONTROL UNIT (PCU) REMOVAL/INSTALLATION**)
- Rear trim panel (see **TRIM REMOVAL/INSTALLATION - CARGO AREA**)
- Quarter trim panel (see **TRIM REMOVAL/INSTALLATION - REAR QUARTER PANEL AREA**)
- Middle floor panel (see **MIDDLE FLOOR PANEL REPLACEMENT**)

2. Remove the IMA case as shown.

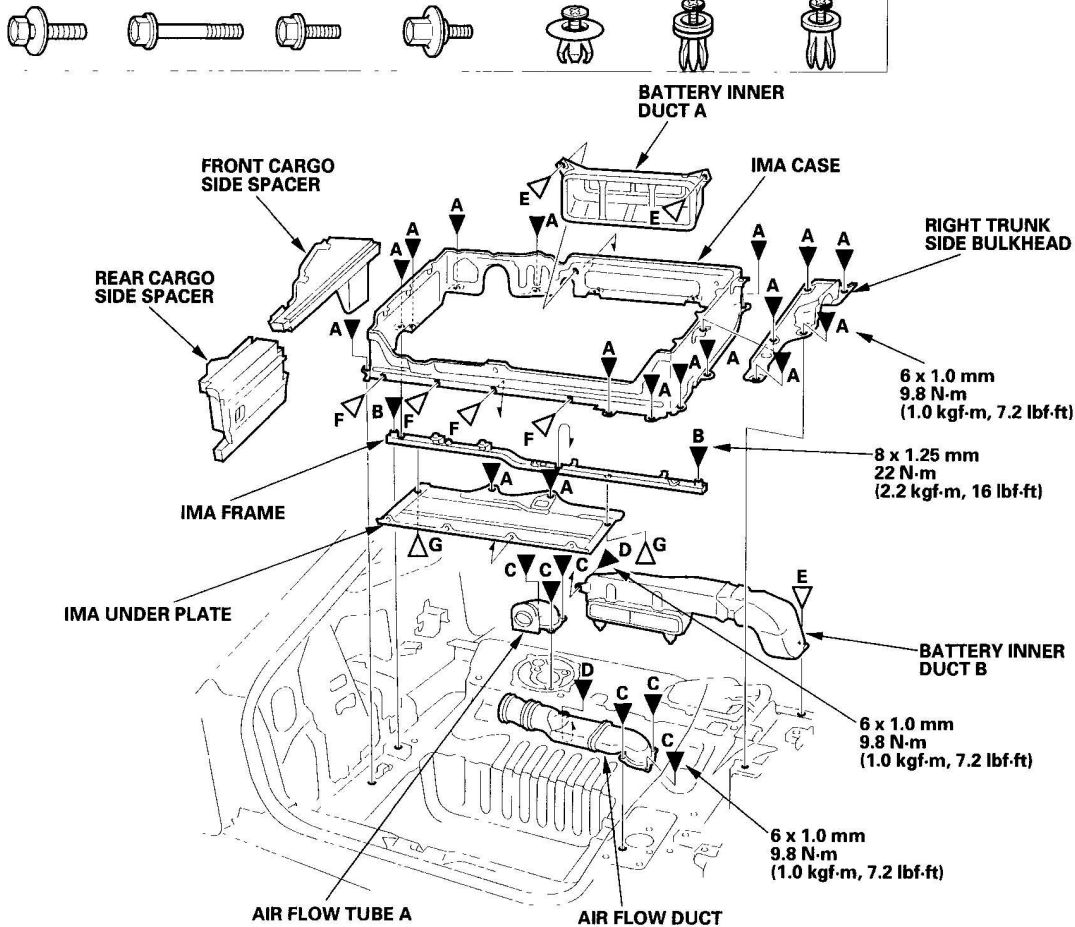
3. Install the IMA case in the reverse order of removal, and check for damaged or stress-whitened clips, and replace them with new ones.

2006 Honda Insight

2000-06 ACCESSORIES & EQUIPMENT Frame - Insight

Fastener Locations

A ▶ : Bolt, 17 B ▶ : Bolt, 2 C ▶ : Bolt, 6 D ▶ : Bolt, 2 E ▶ : Clip, 3 F ▶ : Clip, 4 G ▶ : Clip, 2



G03682647

Fig. 3: Installing IMA Case In Reverse Order
Courtesy of AMERICAN HONDA MOTOR CO., INC.

FRAME REPAIR CHART

TOP VIEW

2006 Honda Insight

2000-06 ACCESSORIES & EQUIPMENT Frame - Insight

Unit: mm (in.)

ø: Inner diameter

Ⓛ: Left side

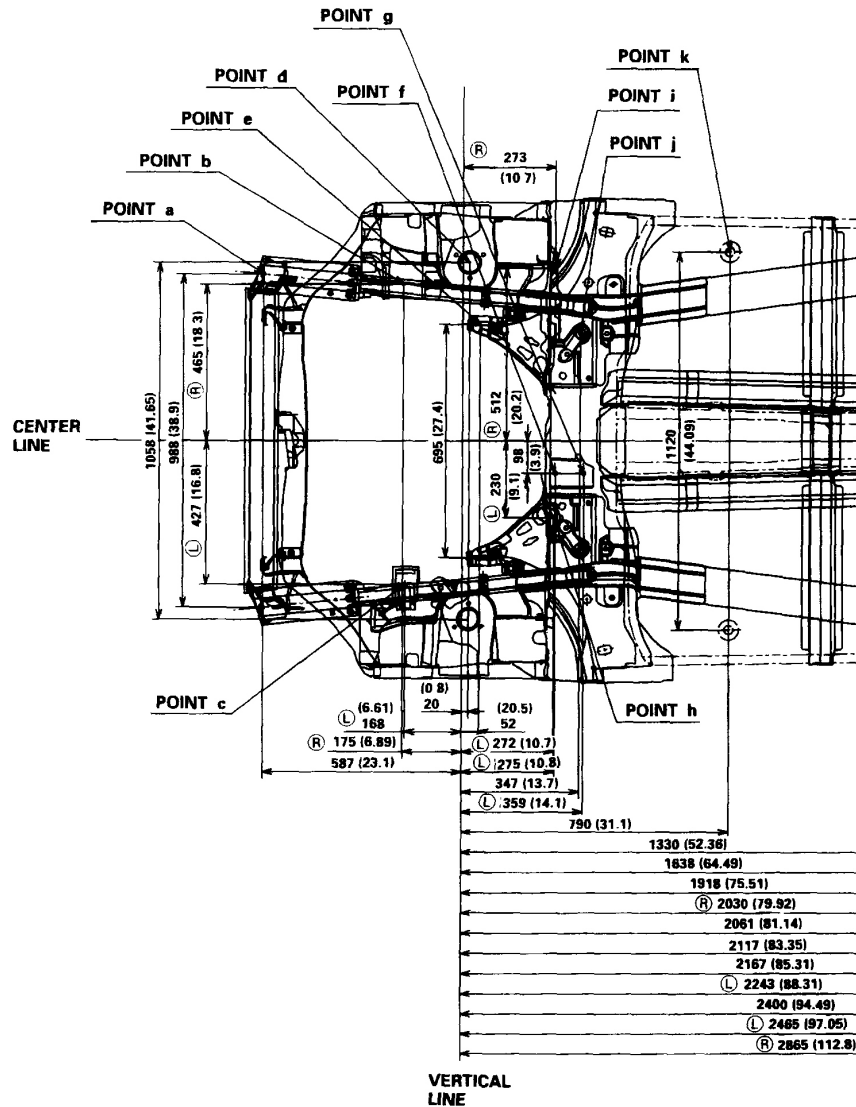
Ⓡ: Right side

POINT

- a Locate hole ø10.5 (0.41)
- b Engine mount center
- c For transmission mount ø10.5 (0.41)
- d Front damper center ø57 (2.2)
- e Lower arm bushing center
- f For engine rear mount ø12.2 (0.48)

POINT

- g For engine rear mount ø12.2 (0.48)
- h Steering gearbox ø11 (0.43)
- i Steering gearbox ø9 (0.35)
- j For lower arm bushing ø12.2 (0.48)
- k Locate hole ø26.8 (1.06)



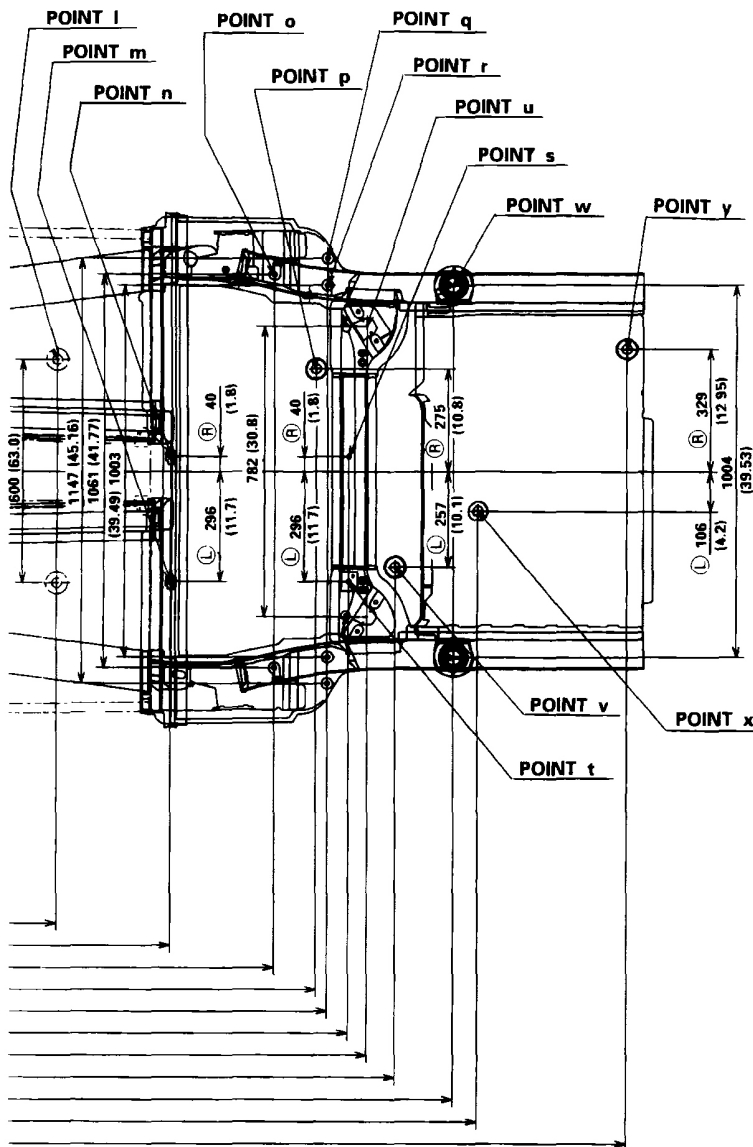
G03682648

Fig. 4: Identifying Top View Frame (1 Of 2)
 Courtesy of AMERICAN HONDA MOTOR CO., INC.

2006 Honda Insight

2000-06 ACCESSORIES & EQUIPMENT Frame - Insight

POINT		POINT	
l	Locate hole $\phi 26.8$ (1.06)	s	For fuel tank strap $\phi 11$ (0.433)
m	For fuel tank strap $\phi 12$ (0.476)	t	For fuel tank strap $\phi 12$ (0.476)
n	For fuel tank strap $\phi 12$ (0.476)	u	Rear damper bushing center
o	For trailing arm bracket $\phi 12$ (0.476)	v	Locate hole $\phi 26.6$ (1.05)
p	Locate hole $\phi 26.6$ (1.05)	w	Coil spring base center
q	For trailing arm bracket $\phi 12$ (0.476)	X	Locate hole $\phi 26.6$ (1.05)
r	For trailing arm bracket $\phi 12$ (0.476)	Y	Locate hole $\phi 26.6$ (1.05)



G03682649

Fig. 5: Identifying Top View Frame (2 Of 2)
 Courtesy of AMERICAN HONDA MOTOR CO., INC.

SIDE VIEW

2006 Honda Insight

2000-06 ACCESSORIES & EQUIPMENT Frame - Insight

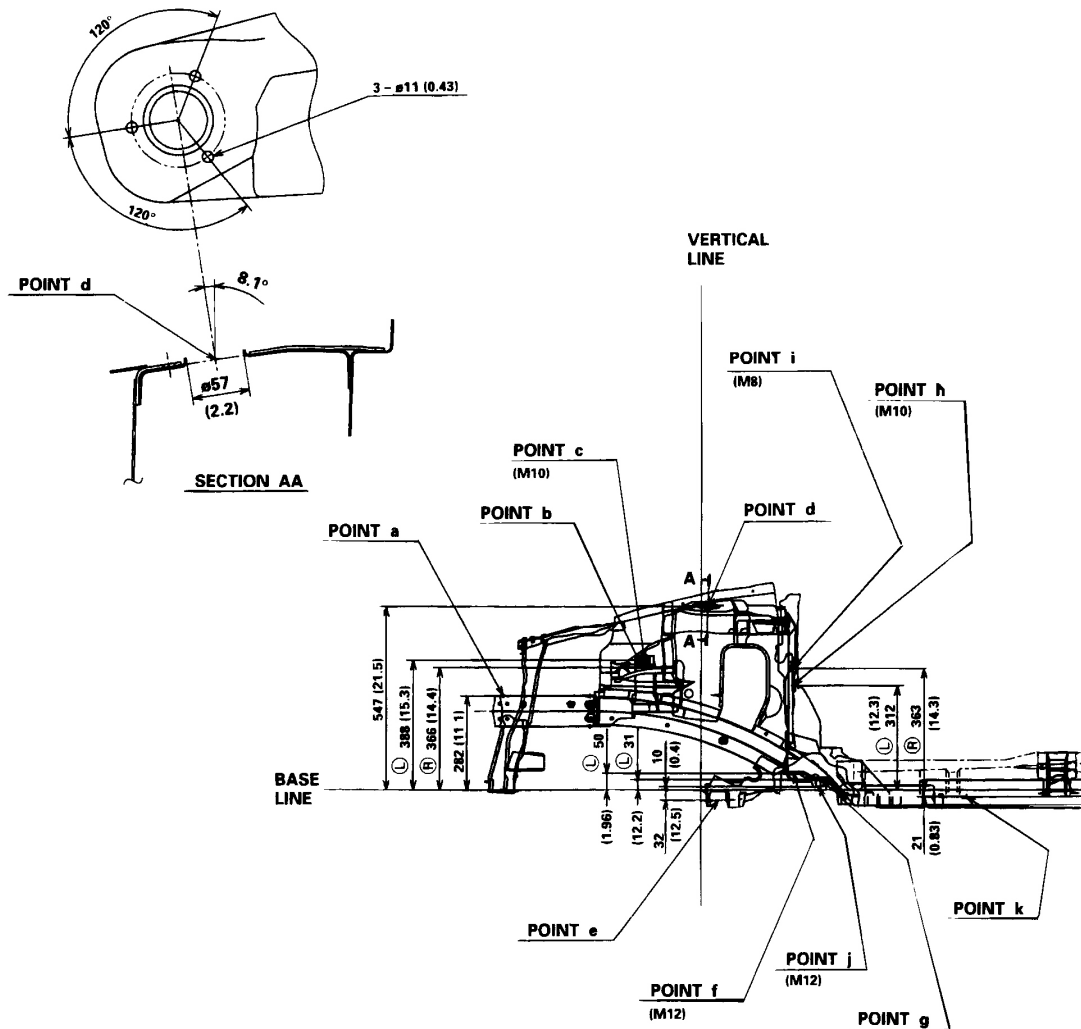
Unit: mm (in.)
 ø: Inner diameter
 L: Left side
 R: Right side

POINT

- a Locate hole ø10.5 (0.41)
- b Engine mount center
- c For transmission mount ø10.5 (0.41)
- d Front damper center ø57 (2.2)
- e Lower arm bushing center
- f For engine rear mount ø12.2 (0.48)

POINT

- g For engine rear mount ø12.2 (0.48)
- h Steering gearbox ø11 (0.43)
- i Steering gearbox ø9 (0.35)
- j For lower arm bushing ø12.2 (0.48)
- k Locate hole ø26.8 (1.06)



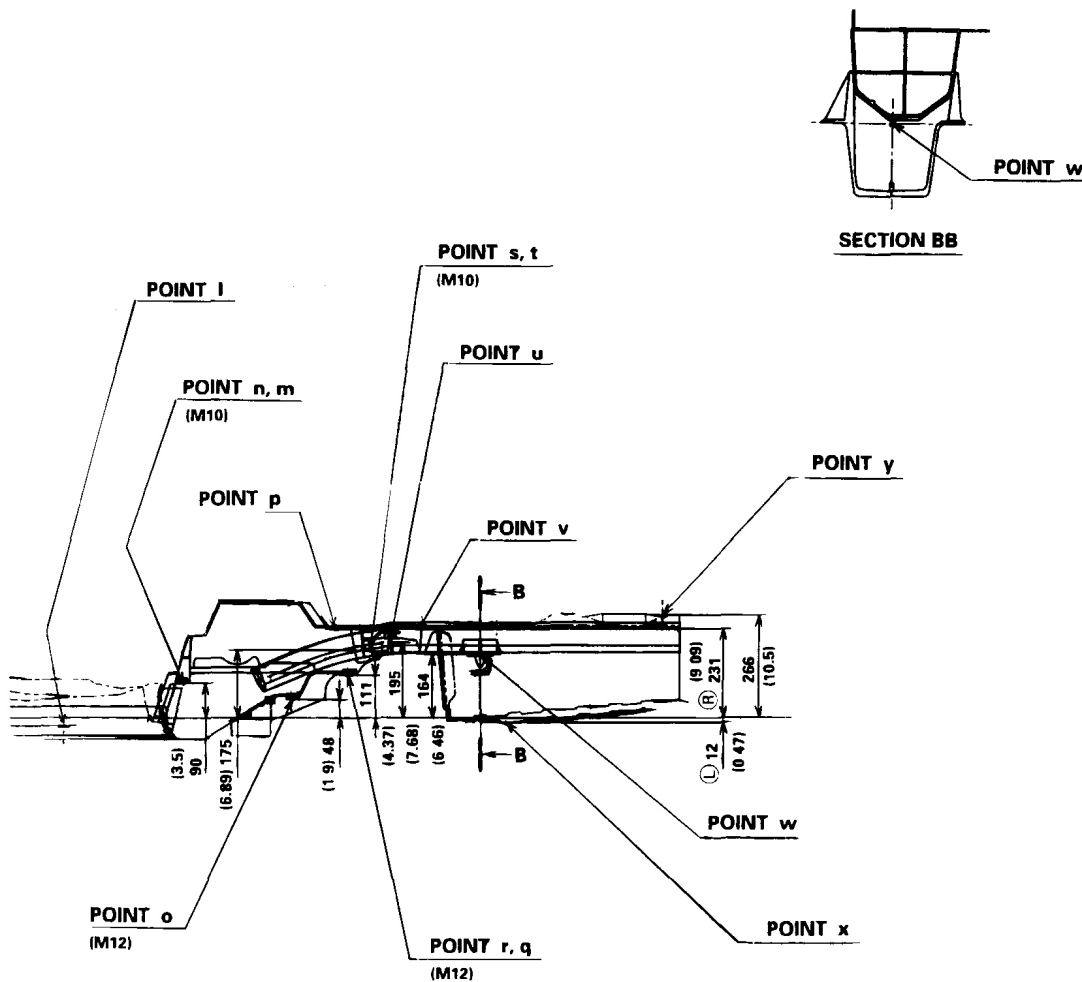
G03682650

Fig. 6: Identifying Top Side View (1 Of 2)
 Courtesy of AMERICAN HONDA MOTOR CO., INC.

2006 Honda Insight

2000-06 ACCESSORIES & EQUIPMENT Frame - Insight

POINT	POINT
l Locate hole $\varnothing 26.8$ (1.06)	s For fuel tank strap $\varnothing 11$ (0.433)
m For fuel tank strap $\varnothing 12$ (0.476)	t For fuel tank strap $\varnothing 12$ (0.476)
n For fuel tank strap $\varnothing 12$ (0.476)	u Rear damper bushing center
o For trailing arm bracket $\varnothing 12$ (0.476)	v Locate hole $\varnothing 26.6$ (1.05)
p Locate hole $\varnothing 26.6$ (1.05)	w Coil spring base center
q For trailing arm bracket $\varnothing 12$ (0.476)	X Locate hole $\varnothing 26.6$ (1.05)
r For trailing arm bracket $\varnothing 12$ (0.476)	Y Locate hole $\varnothing 26.6$ (1.05)



G03682651

Fig. 7: Identifying Top Side View (2 Of 2)
 Courtesy of AMERICAN HONDA MOTOR CO., INC.

SUPPLEMENTAL RESTRAINT SYSTEM (SRS) (IF HVAC MAINTENANCE IS REQUIRED)

The Insight SRS includes a driver's airbag in the steering wheel hub, a passenger's airbag in the dashboard above the glove box, and seat belt tensioners in the seat belt retractors. Information necessary to safely service the SRS is included in this Service Manual. Items marked with an asterisk (*) on the contents page include or are located near SRS components. Servicing, disassembling or replacing these items require special precautions and tools, and should be done by an authorized Honda dealer.

- To avoid rendering the SRS inoperative, which could lead to personal injury or death in the event of a severe frontal collision, all SRS service work must be performed by an authorized Honda dealer.
- Improper service procedures, including incorrect removal and installation of the SRS, could lead to personal injury caused by unintentional deployment of the airbags and/or seat belt tensioners.
- Do not bump or impact the SRS unit, front impact sensors when the ignition switch is ON (II), or for at least 3 minutes after the ignition switch is turned OFF; otherwise, the system may fail in a collision, or the airbags may deploy.
- SRS electrical wiring harnesses are identified by yellow color coding. Related components are located in the steering column, console, dashboard, dashboard lower panel and in the dashboard above the glove box. Do not use electrical test equipment on these circuits.