

REMOVAL

1. **DISCONNECT CABLE FROM NEGATIVE BATTERY TERMINAL**

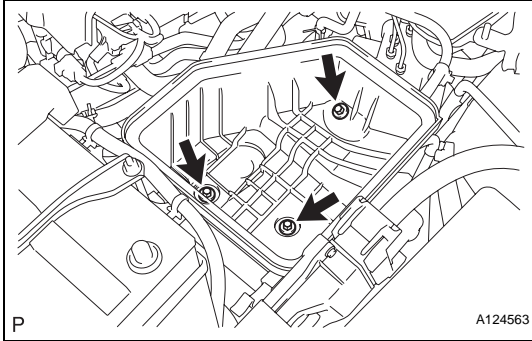
CAUTION:

Wait at least 90 seconds after disconnecting the cable from the negative (-) battery terminal to prevent airbag and seat belt pretensioner activation.

2. **REMOVE AIR CLEANER CAP (See page ES-411)**

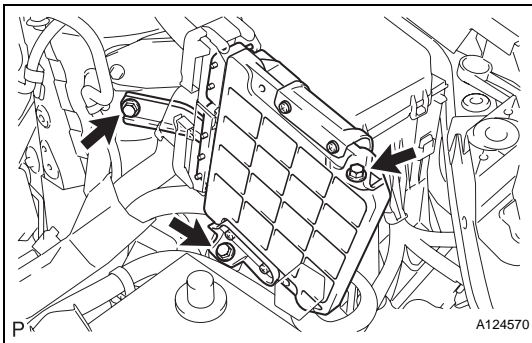
3. **REMOVE AIR CLEANER CASE**

- (a) Disconnect the harness clamp.
- (b) Remove the 3 bolts and air cleaner case.



4. **REMOVE ECM**

- (a) Remove the 3 bolts of the ECM with bracket.



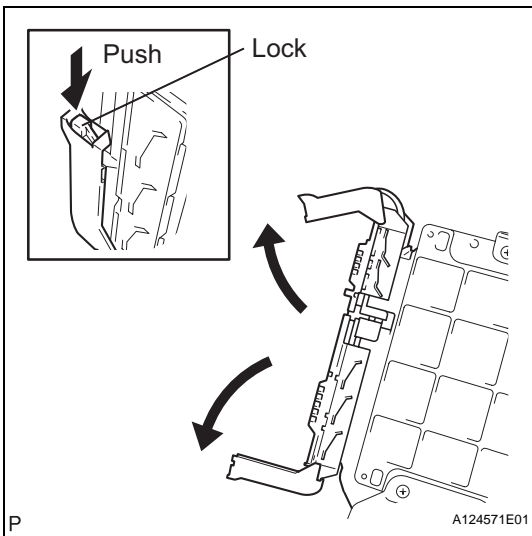
- (b) Disconnect the 2 ECM connectors.

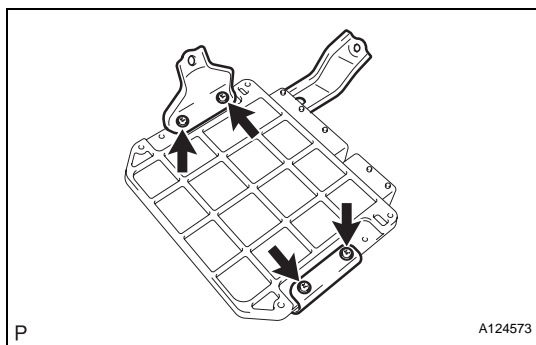
NOTICE:

After disconnecting the connector, make sure that dirt, water and other foreign matter does not contact the connecting part of the connector.

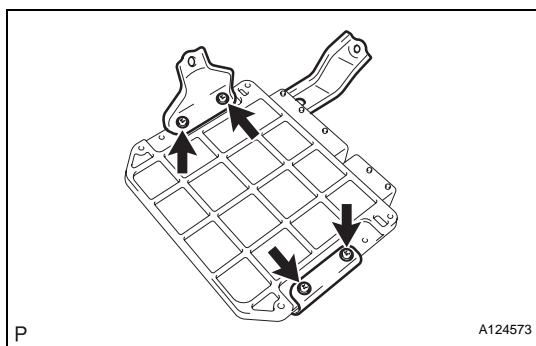
- (1) Raise the 2 levers while pushing the locks on the 2 levers, and disconnect the 2 ECM connectors.

- (c) Remove the ECM with bracket.





(d) Remove the 4 screws and 2 ECM brackets.



INSTALLATION

1. INSTALL ECM

(a) Install the 2 brackets to the ECM with the 4 screws.
Torque: 3.0 N*m (30 kgf*cm, 27 in.*lbf)

(b) Connect the 2 ECM connectors.

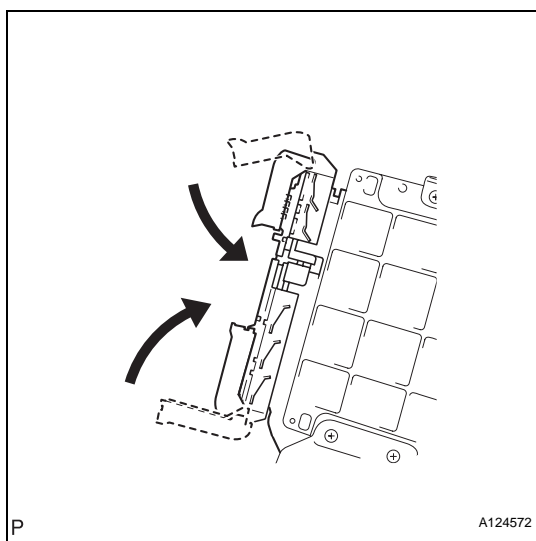
NOTICE:

When connecting the connector, make sure that dirt, water and other foreign matter does not become stuck between the connector and other part.

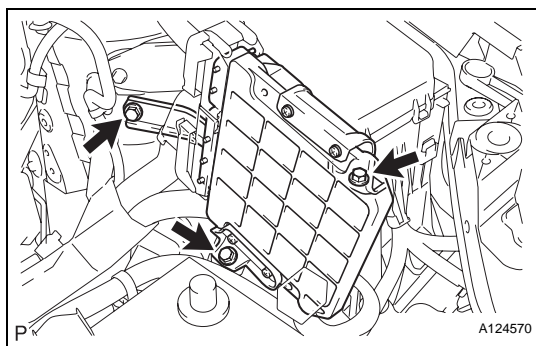
(1) Connect the 2 ECM connectors and lower the 2 levers.

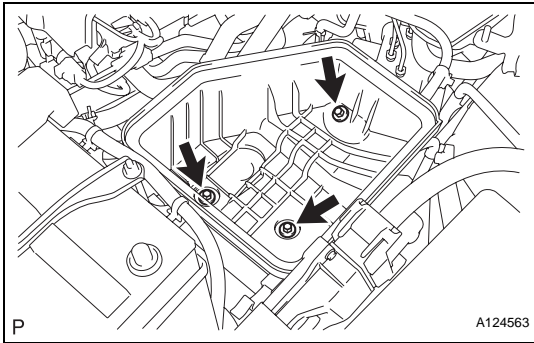
NOTICE:

Make sure that the 2 levers are securely lowered.



(c) Install the ECM with the 3 bolts.
Torque: 6.5 N*m (66 kgf*cm, 57 in.*lbf)



**2. INSTALL AIR CLEANER CASE**

- (a) Install the air cleaner case with the 3 bolts.
Torque: 5.0 N*m (51 kgf*cm, 44 in.*lbf)
- (b) Connect the harness clamp.

3. INSTALL AIR CLEANER CAP (See page [ES-413](#))**4. CONNECT CABLE TO NEGATIVE BATTERY TERMINAL****5. PERFORM REGISTRATION**

- (a) When replacing the ECM, the Vehicle Identification Number (VIN) must be input into the replacement ECM (see page [ES-13](#)).
- (b) When replacing the ECM, perform the vehicle stability control system recognition in the ECM (see page [CC-12](#)).

6. RESET MEMORY

- (a) When replacing the ECM, perform the RESET MEMORY procedure (A/T initialization) (see page [AX-18](#)).