

Last Modified: 12-04-2024	6.11:8.1.0	Doc ID: RM100000028UY8
Model Year Start: 2023	Model: Prius Prime	Prod Date Range: [12/2022 -]
Title: SUPPLEMENTAL RESTRAINT SYSTEMS: AIRBAG SYSTEM: VEHICLE CONTROL HISTORY; 2023 - 2024 MY Prius Prius Prime [12/2022 -]		

VEHICLE CONTROL HISTORY

FUNCTION OVERVIEW

- (a) The vehicle control history is a function that records control data (record data) when triggered by specific vehicle behavior or user input. Checking the vehicle control history may provide, quantitative diagnostic information that can be used as a reference to proceed with a malfunction diagnosis. However, due to limitations of the data recorded, such as the resolution, data range, sampling interval, time period of the recording, and the items recorded, the information provided by this data may not be sufficient to capture the entire event. Data storage properties may also affect the way data is output.
- (b) The vehicle control history may also stores image data when a specific trigger is set.
- (c) The vehicle control history is recorded in different storage areas designated by trigger group and it is possible to save up to 140 items in total. Newer events with Vehicle Control History "VCH"/ Freeze Frame Data "FFD" may overwrite data from past events.
- (d) Each trigger receives time information from the central gateway ECU (time elapsed since ignition switch turned to ON), the telematics system or navigation system* (absolute time).

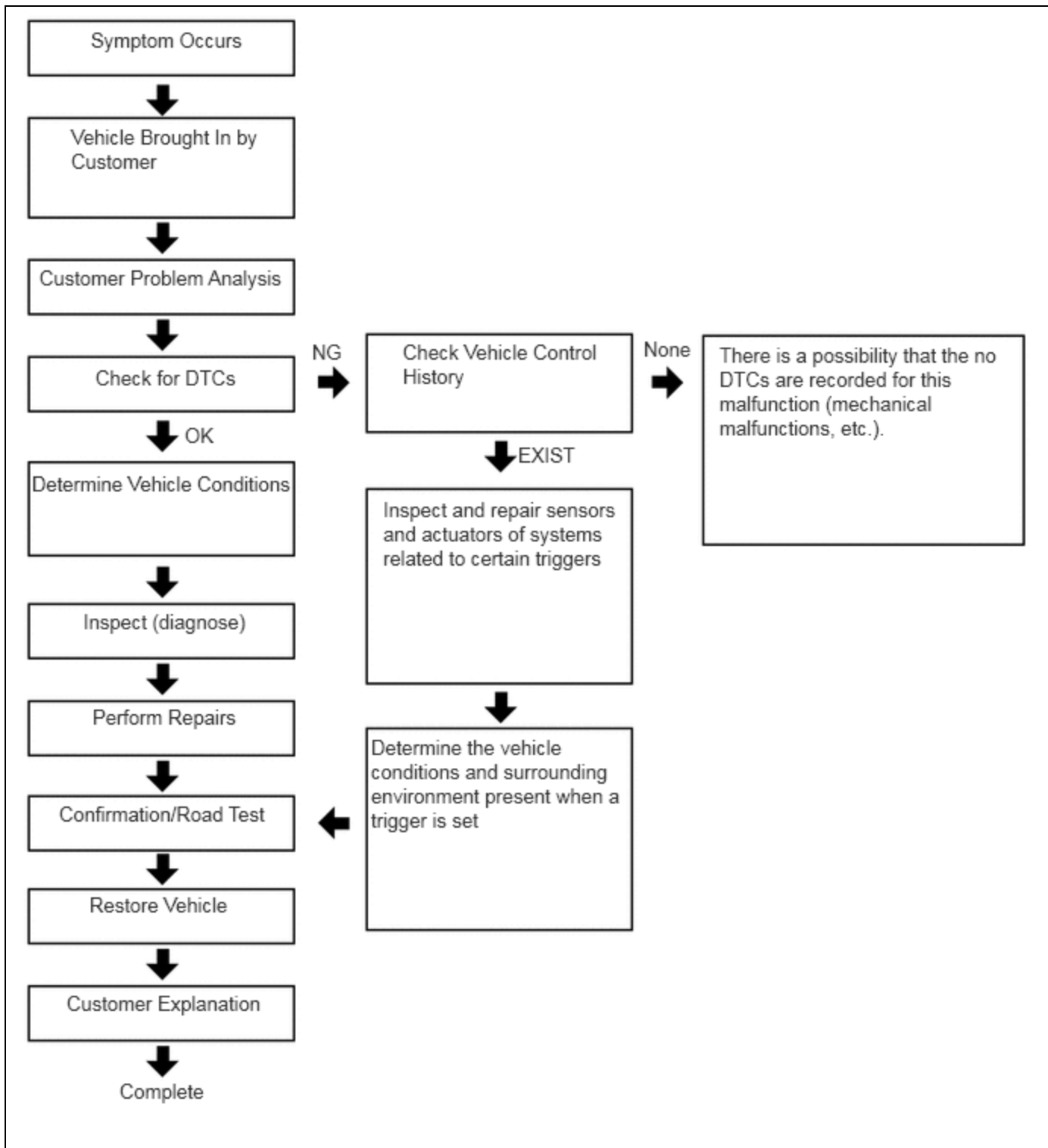
*: Only for factory-installed navigation systems (factory option)

- (e) Data is recorded in the airbag ECU assembly EEPROM. Even if the negative (-) auxiliary battery terminal is disconnected, the vehicle control history is available.
- (f) The image data is stored in the camera sensor EEPROM.

NOTICES FOR USE

- (a) Vehicle control history is used as support information during diagnosis for each system.
- (b) Trigger data is based on signals from sensors and actuators (recognition value of each ECU).

Basic Flow



TRIGGER ITEM

- (a) Turn the ignition switch to ON

NOTICE:

The automatic power off function operates after 20 minutes with the ignition switch ON. If reading will take some time to complete, engine start or turn the ignition switch on (READY) first.

Body Electrical > SRS Airbag > Utility

TESTER DISPLAY
Vehicle Control History

Trigger Item Chart

RELATED SYSTEM	STORAGE AREA GROUP (STORAGE LIMIT)	TRIGGER ITEM NAME	TRIGGER DESCRIPTION	IMAGE RECORDING	REMARKS
Engine Control / Hybrid Control / Automatic Transmission	Area 17 (Approximately 3 times)	Step on accelerator pedal quickly in low to mid speed and accelerator pedal opening angle high	Sudden accelerator depression and an accelerator high position signal are detected while in the low to mid speed range.	-	-
	Area 2 (Approximately 11 times)	Accelerator pedal opening angle signal is high during low speed	An accelerator high position signal condition continues for a certain period of time while in the low speed range.	-	-
		Accelerator pedal opening angle signal is high immediately after brake pedal is released	An accelerator high position signal is received while in the low speed range after there is a change from brake input condition to brake and accelerator pedal released condition.	-	-
	Area 7 (Approximately 7 times)	Accelerator high position in mid to high speed	An accelerator high position signal condition continues for a certain period of time while in the mid to high speed range.	-	-
Engine Control / Hybrid Control / Automatic Transmission	Area 3 (Approximately 21 times)	Accelerator pedal opening angle is medium or higher immediately after shifting to R	An accelerator mid to high position signal is received while in the low speed range immediately after the shift lever is moved to R during an accelerator low position signal condition.	-	Only hybrid vehicles
		Accelerator pedal opening angle is medium or higher immediately after shifting to forward position	An accelerator mid to high position signal is received while in the low speed range immediately after the shift lever is moved to a forward position (a position other than P, N or R) during an accelerator low position signal condition.	-	Only hybrid vehicles

RELATED SYSTEM	STORAGE AREA GROUP (STORAGE LIMIT)	TRIGGER ITEM NAME	TRIGGER DESCRIPTION	IMAGE RECORDING	REMARKS
		Accelerator pedal opening angle is medium or higher immediately after shifting to driving position	An accelerator mid to high position signal is received while in the low speed range immediately after the shift lever is moved to a driving position (a position other than P or N) during an accelerator low position signal condition.	-	Only hybrid vehicles
		R position signal input during medium or higher accelerator signal input	An accelerator mid to high position signal condition while the shift lever is in R continues for a certain period of time after the shift lever is moved to R during an accelerator mid to high position signal condition.	-	Only hybrid vehicles
Engine Control / Hybrid Control / Automatic Transmission	Area 3 (Approximately 21 times)	Forward position signal input during medium or higher accelerator signal input	An accelerator mid to high position signal condition continues for a certain period of time while in a forward position (a position other than P, N or R) after shifting to a forward position (a position other than P, N, or R) during an accelerator mid to high position signal condition.	-	Only hybrid vehicles
		Driving position signal input during medium or higher accelerator signal input	The shift lever is moved to a driving position (a position other than P or N) during an accelerator mid to high position signal condition.	-	Only hybrid vehicles
		Accelerator signal and brake signal input simultaneously	An accelerator mid to high position signal condition and brake input condition simultaneously continue for a certain period of time.	-	-
		Medium or higher accelerator signal input immediately after switching to D or R	The shift lever is moved to D (or R) during an accelerator low signal condition after the shift lever is moved to R (or D). After that, an accelerator mid to high position signal is received.	-	-

RELATED SYSTEM	STORAGE AREA GROUP (STORAGE LIMIT)	TRIGGER ITEM NAME	TRIGGER DESCRIPTION	IMAGE RECORDING	REMARKS
		Medium or higher accelerator signal input during N	An accelerator mid to high position signal is received while in a low speed range after the shift lever is moved to N.	-	-
Brake Control	Area 5 (Approximately 26 times)	VSC operation history	When VSC operation starts.	-	Only for vehicles with VSC
		TRC operation history	When TRC operation starts.	-	Only for vehicles with TRC
		ABS operation history	When ABS operation starts.	-	-
	Area 1 (Approximately 7 times)	Sudden braking history	Detects forward and backward acceleration above a certain level.	o	Only for vehicles with VSC
		Sudden turning history	Detects lateral acceleration above a certain level.	o	Only for vehicles with VSC
	Area 11 (Approximately 2 times)	SCB operation history	The SCB (second crash brake) operates.	-	Only for vehicles with SCB
		Post-Collision acceleration restriction	The post-collision acceleration restriction function operates.	-	Only for vehicles with post-collision acceleration restriction function
	Vehicle Control	Area 13 (Approximately 3 times)	Acceleration above certain amount is detected	Forward and backward acceleration above a certain level is detected.	o
Emergency	Area 18 (Approximately 5 times)	Impact detection with vulnerable road users (pedestrian or two-wheeled vehicle)	Collision with a pedestrian or motorcycle under certain conditions is detected.	-	-
		PCS judgment for vulnerable road users impact detection system	Preventive safety sensor determines that a collision is unavoidable.	-	Only for vehicles with PCS
		Front sensor judgment for vulnerable road	Front collision sensor detects input at or above a certain level.	-	-

RELATED SYSTEM	STORAGE AREA GROUP (STORAGE LIMIT)	TRIGGER ITEM NAME	TRIGGER DESCRIPTION	IMAGE RECORDING	REMARKS
		users impact detection system			
	Area 14 (Approximately 5 times)	SOS Button Triggered	Turns on when the SOS switch is pressed. Pressed during a manual emergency call.	○	-
		EPB Dynamic Deceleration Active	Dynamic EPB (electric parking brake) operation via operation of the EPB (electric parking brake) switch while driving is detected.	○	-
		EPB Dynamic Deceleration Inactive	Dynamic EPB (electric parking brake) control is ended via operation of the EPB (electric parking brake) switch while driving is detected.	○	-
Airbag Control	Area 15 (Approximately 5 times)	SRS Airbag System Over Constant Sensor Signal Input (Longitudinal)	The SRS airbag system detects a collision sensor signal input above a certain level in the forward and backward directions.	-	-
		SRS Airbag System Over Constant Sensor Signal Input (Lateral)	The SRS airbag system detects a collision sensor signal input above a certain level in the left/right directions.	-	-
Cruise Control	Area 4 (Approximately 7 times)	Input accelerator in ACC/CC	An accelerator high position signal condition continues for a certain period of time during cruise control.	-	Only for vehicles with cruise control
	Area 16 (Approximately 30 times)	ACC Deceleration	Detects gentle deceleration by ACC control	○	Only for vehicles with cruise control
	Area 19 (Approximately 30 times)	ACC cancel after resume	Cancel operation immediately after ACC restart is detected.	○	Only for vehicles with cruise control
Emergency Driving Stop System Control	Area 12 (Approximately 10 times)	Emergency Driving Stop System History (Shift to Deceleration phase)	Emergency driving stop system history (decelerating stop transition phase).	-	Only for vehicles with emergency driving stop system
		Emergency Driving Stop System	Emergency driving stop system history (stop vehicle	-	Only for vehicles with

RELATED SYSTEM	STORAGE AREA GROUP (STORAGE LIMIT)	TRIGGER ITEM NAME	TRIGGER DESCRIPTION	IMAGE RECORDING	REMARKS
		History (Shift to Stop phase)	transition phase).		emergency driving stop system
		Emergency Driving Stop System History (Cancellation from Warning phase)	Emergency driving stop system history (cancellation from warning 1 phase).	-	Only for vehicles with emergency driving stop system
		Emergency Driving Stop System History (Cancellation from Speed restraint phase)	Emergency driving stop system history (cancellation from warning 2 phase).	-	Only for vehicles with emergency driving stop system
		Emergency Driving Stop System History (Cancellation from Deceleration phase)	Emergency driving stop system history (cancellation from decelerating stop phase).	-	Only for vehicles with emergency driving stop system
		Emergency Driving Stop System History (Cancellation from Stop phase)	Emergency driving stop system history (cancellation from stopped on vehicle phase).	-	Only for vehicles with emergency driving stop system
Pre-collision	Area 6 (Approximately 15 times)	PCS operation history (warning buzzer operation)	PCS (warning buzzer) operates.	o	Only for vehicles with PCS
		PCS operation history (Emergency Steering Assist operation)	PCS (emergency steering assist) operates.	o	Only for vehicles with PCS
		PCS operation history (pre-collision brake assist operation)	PCS (PCS brake assist) operates.	o	Only for vehicles with PCS
		PCS operation history (prior brake operation)	PCS (preliminary braking) operates.	o	Only for vehicles with PCS
		PCS operation history (pre-collision brake operation)	PCS (PCS brake) operates.	o	Only for vehicles with PCS

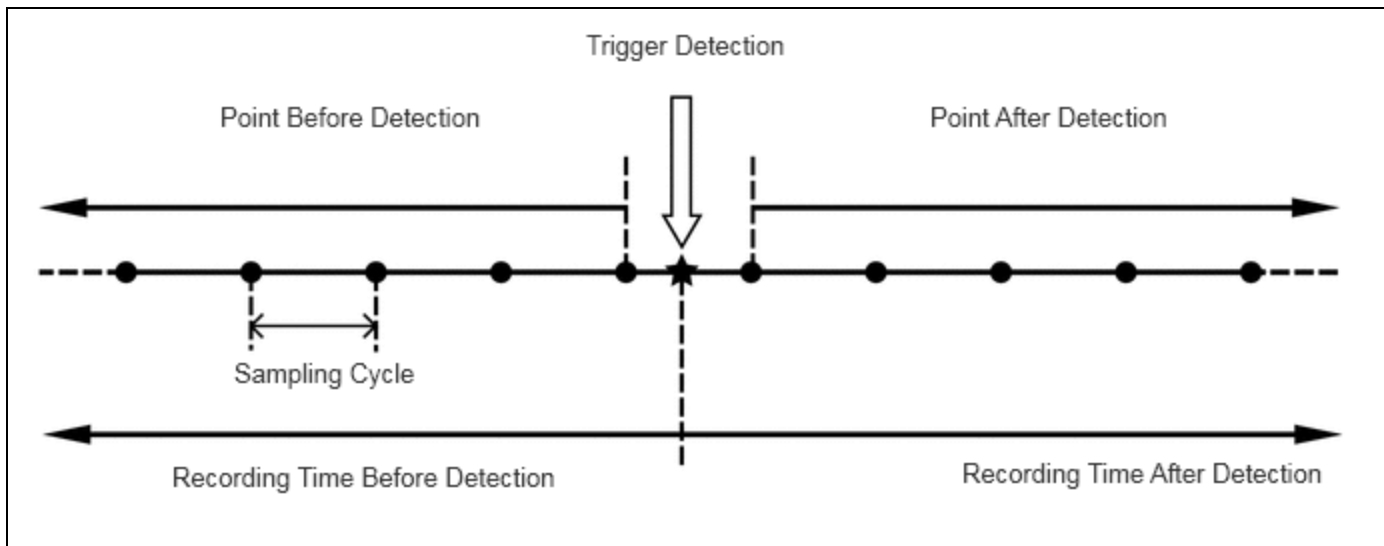
RELATED SYSTEM	STORAGE AREA GROUP (STORAGE LIMIT)	TRIGGER ITEM NAME	TRIGGER DESCRIPTION	IMAGE RECORDING	REMARKS
		PCS operation history (pre-collision seat belt operation)	PCS (PCS seat belt) operates.	-	Only for vehicles with PCS
		PCS operation history (pre-pump operation)	PCS (PCS brake assist standby) operates.	-	Only for vehicles with PCS
		PCS operation history (PBR operation)	PCS (stop light illumination) operates.	-	Only for vehicles with PCS
		PCS operation history (PBH operation)	PCS (after operation brake hold) operates.	-	Only for vehicles with PCS
		PCS operation history (avoidance support)	PCS (evasion support) operates.	-	Only for vehicles with PCS
		PCS operation history (request combined steering)	Steering assist is requested.	-	Only for vehicles with PCS
		Pedestrian Protection System Over Constant Pressure Sensor Signal Input	Pressure sensor signal input above a certain amount is detected.	○	Only for vehicles with Pedestrian Protection System
		PCS operation history (side airbag operation request)	Side airbag prevention-linked function operates.	-	Only for vehicles with PCS
Lane Departure Alert / Lane-keeping Assist	Area 8 (Approximately 12 times)	Steering angle speed threshold exceeded	When the LKA/LDA/LTA system is ON, a torque sensor signal above a certain amount is detected.	○	Only for vehicles with LKA/LDA/LTA
		Lane Change Assist operation history	Lane change assist operates.	-	Only for vehicles with LCA
Parking Support Brake Control	Area 9 Approximately 23 times)	PKSB operation history (output limit)	PKSB (output limit) operates.	-	Only for vehicles with PKSB
		PKSB operation history (max output limit)	PKSB (max output limit) operates.	○	Only for vehicles with PKSB
		PKSB operation history (brake	PKSB (brake control) operates.	○	Only for vehicles with

RELATED SYSTEM	STORAGE AREA GROUP (STORAGE LIMIT)	TRIGGER ITEM NAME	TRIGGER DESCRIPTION	IMAGE RECORDING	REMARKS
		control)			PKSB
		PKSB operation history (stop)	PKSB (stop) operates.	-	Only for vehicles with PKSB
		PKSB operation history (regression)	PKSB (regression) operates.	-	Only for vehicles with PKSB
		PKSB operation history (temporarily not available)	PKSB (temporarily not available) operates.	-	Only for vehicles with PKSB
FHL	Area 10 (Approximately 24 times)	FHL operation history	Proximity warning for rear vehicles operates.	○	Only for vehicles with FHL
		Secondary Collision Brake (Rear impacts while stopped) operation history	Second collision brake (for rear collisions while stopped) operation request is detected.	○	Only for vehicles with FHL
		Rear Vehicle Approaching Indication operation history	Operation request for notification of vehicle approaching from rear is detected.	○	Only for vehicles with FHL
		Approaching Vehicle Support operation history	Support operation request is detected when a nearby vehicle is approaching.	○	Only for vehicles with FHL

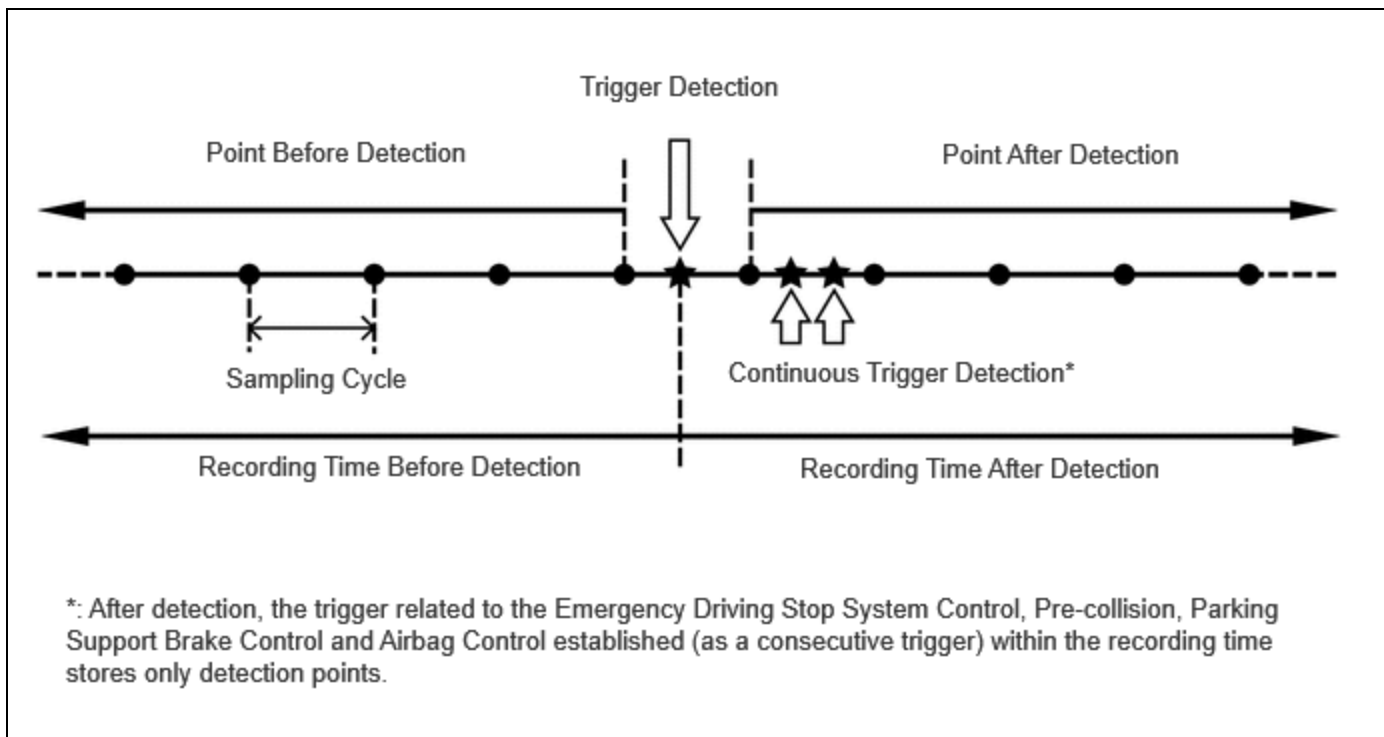
RECORD DATA ITEMS

- (a) When a trigger is detected, the vehicle status (ECU data) before and after the trigger are simultaneously recorded as record data.
- (b) Recording time and record data differ for each trigger.
- (c) The sampling cycle and recording time for the record data and image data is not always the same.

When not "Emergency Driving Stop System Control / Pre-collision / Parking Support Brake Control / Airbag Control Operation History"



When "Emergency Driving Stop System Control / Pre-collision / Parking Support Brake Control / Airbag Control Operation History"



Record Data Specifications

TRIGGER ITEM		RECORD DATA				
		BEFORE DETECTION		AFTER DETECTION		SAMPLING CYCLE (SEC.)
ID NO.	ITEM	RECORDING TIME (SEC.)	NUMBER OF POINTS	RECORDING TIME (SEC.)	NUMBER OF POINTS	
2	Accelerator pedal opening angle signal is high during low speed	7.5	15	7.5	16	0.5
3	Accelerator high position in mid to high speed	7.5	15	7.5	16	0.5

TRIGGER ITEM		RECORD DATA				
ID NO.	ITEM	BEFORE DETECTION		AFTER DETECTION		SAMPLING CYCLE (SEC.)
		RECORDING TIME (SEC.)	NUMBER OF POINTS	RECORDING TIME (SEC.)	NUMBER OF POINTS	
4	Accelerator pedal opening angle signal is high immediately after brake pedal is released	7.5	15	7.5	16	0.5
5-1	Accelerator pedal opening angle is medium or higher immediately after shifting to R					
5-2	Accelerator pedal opening angle is medium or higher immediately after shifting to forward position	5	10	5	11	0.5
5-3	Accelerator pedal opening angle is medium or higher immediately after shifting to driving position					
6-1	R position signal input during medium or higher accelerator signal input					
6-2	Forward position signal input during medium or higher accelerator signal input	5	10	5	11	0.5
6-3	Driving position signal input during medium or higher accelerator signal input					
8	Accelerator signal and brake signal input simultaneously	5	10	5	11	0.5
9	Medium or higher accelerator signal input immediately after switching to D or R	5	10	5	11	0.5
10	Medium or higher accelerator signal input during N	5	10	5	11	0.5
12	VSC operation history	5	34	5	35	0.15
13	TRC operation history	5	34	5	35	0.15
14	ABS operation history	5	34	5	35	0.15
15	Sudden braking history	5	34	5	35	0.15
16	Sudden turning history	5	34	5	35	0.15
17	Input accelerator in ACC/CC	5	10	5	11	0.5
18-1	PCS operation history (warning buzzer operation)	5	10	4	9	0.5
18-2	PCS operation history (Emergency Steering Assist operation)					
18-3	PCS operation history (pre-collision brake assist operation)					

TRIGGER ITEM		RECORD DATA				
		BEFORE DETECTION		AFTER DETECTION		SAMPLING CYCLE (SEC.)
ID NO.	ITEM	RECORDING TIME (SEC.)	NUMBER OF POINTS	RECORDING TIME (SEC.)	NUMBER OF POINTS	
18-4	PCS operation history (prior brake operation)					
18-5	PCS operation history (pre-collision brake operation)					
18-6	PCS operation history (pre-collision seat belt operation)					
18-7	PCS operation history (pre-pump operation)					
18-8	PCS operation history (PBR operation)					
18-9	PCS operation history (PBH operation)					
18-10	PCS operation history (avoidance support)					
18-12	PCS operation history (request combined steering)					
18-14	Pedestrian Protection System Over Constant Pressure Sensor Signal Input					
18-15	PCS operation history (side airbag operation request)					
19	Steering angle speed threshold exceeded	4	10	4	11	0.4
20-1	PKSB operation history (output limit)					
20-2	PKSB operation history (max output limit)					
20-3	PKSB operation history (brake control)					
20-4	PKSB operation history (stop)	5	10	5	11	0.5
20-5	PKSB operation history (regression)					
20-6	PKSB operation history (temporarily not available)					
22	Lane Change Assist operation history	8	20	4	11	0.4
23-1	FHL operation history	5	25	3	16	0.2

TRIGGER ITEM		RECORD DATA				
		BEFORE DETECTION		AFTER DETECTION		SAMPLING CYCLE (SEC.)
ID NO.	ITEM	RECORDING TIME (SEC.)	NUMBER OF POINTS	RECORDING TIME (SEC.)	NUMBER OF POINTS	
23-2	Secondary Collision Brake (Rear impacts while stopped) operation history					
23-3	Rear Vehicle Approaching Indication operation history					
23-4	Approaching Vehicle Support operation history					
24-1	SCB operation history					
24-2	Post-Collision acceleration restriction	5	34	5	35	0.15
25	Acceleration above certain amount is detected	8	16	5	11	0.5
26-1	Emergency Driving Stop System History (Shift to Deceleration phase)					
26-2	Emergency Driving Stop System History (Shift to Stop phase)					
26-3	Emergency Driving Stop System History (Cancellation from Warning phase)					
26-4	Emergency Driving Stop System History (Cancellation from Speed restraint phase)	2	4	5	11	0.5
26-5	Emergency Driving Stop System History (Cancellation from Deceleration phase)					
26-6	Emergency Driving Stop System History (Cancellation from Stop phase)					
27-1	SOS Button Triggered					
27-2	EPB Dynamic Deceleration Active	7.5	15	5	11	0.5
27-3	EPB Dynamic Deceleration Inactive					
29-1	SRS Airbag System Over Constant Sensor Signal Input (Longitudinal)					
29-2	SRS Airbag System Over Constant Sensor Signal Input (Lateral)	5	10	5	11	0.5

TRIGGER ITEM		RECORD DATA				
ID NO.	ITEM	BEFORE DETECTION		AFTER DETECTION		SAMPLING CYCLE (SEC.)
		RECORDING TIME (SEC.)	NUMBER OF POINTS	RECORDING TIME (SEC.)	NUMBER OF POINTS	
30	ACC Deceleration	7.5	15	2.5	6	0.5
31	Step on accelerator pedal quickly in low to mid speed and accelerator pedal opening angle high	3	20	5	35	0.15
32-1	Impact detection with vulnerable road users (pedestrian or two-wheeled vehicle)	5	34	5	35	0.15
32-2	PCS judgment for vulnerable road users impact detection system					
32-3	Front sensor judgment for vulnerable road users impact detection system					
33	ACC cancel after resume	7.5	15	2.5	6	0.5

Image Data Specifications

TRIGGER ITEM		IMAGE RECORDING ECU	RECORD DATA				
ID NO.	ITEM		BEFORE DETECTION		AFTER DETECTION		SAMPLING CYCLE (SEC.)
		RECORDING TIME (SEC.)	NUMBER OF POINTS	RECORDING TIME (SEC.)	NUMBER OF POINTS		
15	Sudden braking history	Forward recognition camera	6	10	6	10	0.6
16	Sudden turning history	Forward recognition camera	6	10	6	10	0.6
18-1	PCS operation history (warning buzzer operation)	Forward recognition camera	2.4	4	-	-	0.6
18-2	PCS operation history (Emergency Steering Assist operation)	Forward recognition camera	6	10	6	10	0.6
18-3	PCS operation history (pre-collision brake assist operation)						

*1: w/ Panoramic View Monitor System

*2: w/o Panoramic View Monitor System

TRIGGER ITEM		IMAGE RECORDING ECU	RECORD DATA				
ID NO.	ITEM		BEFORE DETECTION		AFTER DETECTION		SAMPLING CYCLE (SEC.)
			RECORDING TIME (SEC.)	NUMBER OF POINTS	RECORDING TIME (SEC.)	NUMBER OF POINTS	
18-4	PCS operation history (prior brake operation)						
18-5	PCS operation history (pre-collision brake operation)						
18-14	Pedestrian Protection System Over Constant Pressure Sensor Signal Input						
19	Steering angle speed threshold exceeded	Forward recognition camera	6	10	6	10	0.6
20-2	PKSB operation history (max output limit)	Forward recognition camera	6	10	6	10	0.6
		Parking assist ECU*1	3	10	3	10	0.3
		Parking assist ECU*2	1.8	3	0.6	1	0.6
20-3	PKSB operation history (brake control)	Forward recognition camera	6	10	6	10	0.6
		Parking assist ECU*1	3	10	3	10	0.3
		Parking assist ECU*2	1.8	3	0.6	1	0.6
23-1	FHL operation history	Forward recognition camera	3.6	3	3.6	3	1.2
23-2	Secondary Collision Brake (Rear impacts while stopped) operation history						
23-3	Rear Vehicle Approaching Indication operation history						
23-4	Approaching Vehicle Support operation						
*1: w/ Panoramic View Monitor System							
*2: w/o Panoramic View Monitor System							

TRIGGER ITEM		IMAGE RECORDING ECU	RECORD DATA				
ID NO.	ITEM		BEFORE DETECTION		AFTER DETECTION		SAMPLING CYCLE (SEC.)
			RECORDING TIME (SEC.)	NUMBER OF POINTS	RECORDING TIME (SEC.)	NUMBER OF POINTS	
	history						
25	Acceleration above certain amount is detected	Forward recognition camera	6	10	6	10	0.6
		Parking assist ECU*1	6	10	6	10	0.6
		Parking assist ECU*2	1.2	2	0.6	1	0.6
27-1	SOS Button Triggered	Forward recognition camera					
27-2	EPB Dynamic Deceleration Active	Forward recognition camera	6	10	6	10	0.6
27-3	EPB Dynamic Deceleration Inactive	Forward recognition camera					
30	ACC Deceleration	Forward recognition camera	3.6	3	0	0	1.2
33	ACC cancel after resume	Forward recognition camera	3.6	3	0	0	1.2
*1: w/ Panoramic View Monitor System							
*2: w/o Panoramic View Monitor System							

Record Data Chart

TESTER DISPLAY	TRIGGER ID NO.
Vehicle Speed	2, 3, 4, 5-1, 5-2, 5-3, 6-1, 6-2, 6-3, 8, 9, 10, 12, 13, 14, 15, 16, 17, 18-1, 18-2, 18-3, 18-4, 18-5, 18-6, 18-7, 18-8, 18-9, 18-10, 18-12, 18-14, 18-15, 19, 20-1, 20-2, 20-3, 20-4, 20-5, 20-6, 22, 23-1, 23-2, 23-3, 23-4, 24-1, 24-2, 25, 26-1, 26-2, 26-3, 26-4, 26-5, 26-6, 27-1, 27-2, 27-3, 29-1, 29-2, 30, 31, 32-1, 32-2, 32-3, 33
Accelerator Opening Ratio	2, 3, 4, 5-1, 5-2, 5-3, 6-1, 6-2, 6-3, 8, 9, 10, 12, 13, 14, 15, 16, 17, 18-1, 18-2, 18-3, 18-4, 18-5, 18-6, 18-7, 18-8, 18-9, 18-10, 18-12, 18-14, 18-15, 19, 20-1, 20-2, 20-3, 20-4, 20-5, 20-6, 22, 23-1, 23-2, 23-3, 23-4, 24-1, 24-2, 25, 26-1, 26-2, 26-3, 26-4, 26-5, 26-6, 27-1, 27-2, 27-3, 29-1, 29-2, 30, 31, 32-1, 32-2, 32-3, 33

TESTER DISPLAY	TRIGGER ID NO.
Engine RPM Data	2, 3, 4, 5-1, 5-2, 5-3, 6-1, 6-2, 6-3, 8, 9, 10, 12, 13, 14, 15, 16, 17, 18-1, 18-2, 18-3, 18-4, 18-5, 18-6, 18-7, 18-8, 18-9, 18-10, 18-12, 18-14, 18-15, 19, 20-1, 20-2, 20-3, 20-4, 20-5, 20-6, 22, 23-1, 23-2, 23-3, 23-4, 24-1, 24-2, 25, 26-1, 26-2, 26-3, 26-4, 26-5, 26-6, 27-1, 27-2, 27-3, 29-1, 29-2, 30, 31, 32-1, 32-2, 32-3, 33
Shift Position Signal	2, 3, 4, 5-1, 5-2, 5-3, 6-1, 6-2, 6-3, 8, 9, 10, 12, 13, 14, 15, 16, 17, 18-1, 18-2, 18-3, 18-4, 18-5, 18-6, 18-7, 18-8, 18-9, 18-10, 18-12, 18-14, 18-15, 19, 20-1, 20-2, 20-3, 20-4, 20-5, 20-6, 22, 23-1, 23-2, 23-3, 23-4, 24-1, 24-2, 25, 26-1, 26-2, 26-3, 26-4, 26-5, 26-6, 27-1, 27-2, 27-3, 29-1, 29-2, 30, 31, 32-1, 32-2, 32-3, 33
Brake SW	2, 3, 4, 5-1, 5-2, 5-3, 6-1, 6-2, 6-3, 8, 9, 10, 12, 13, 14, 15, 16, 17, 18-1, 18-2, 18-3, 18-4, 18-5, 18-6, 18-7, 18-8, 18-9, 18-10, 18-12, 18-14, 18-15, 19, 20-1, 20-2, 20-3, 20-4, 20-5, 20-6, 22, 23-1, 23-2, 23-3, 23-4, 24-1, 24-2, 25, 26-1, 26-2, 26-3, 26-4, 26-5, 26-6, 27-1, 27-2, 27-3, 29-1, 29-2, 30, 31, 32-1, 32-2, 32-3, 33
Brake Oil Pressure	2, 3, 4, 5-1, 5-2, 5-3, 6-1, 6-2, 6-3, 8, 9, 10, 12, 13, 14, 15, 16, 17, 18-1, 18-2, 18-3, 18-4, 18-5, 18-6, 18-7, 18-8, 18-9, 18-10, 18-12, 18-14, 18-15, 19, 20-1, 20-2, 20-3, 20-4, 20-5, 20-6, 22, 23-1, 23-2, 23-3, 23-4, 24-1, 24-2, 25, 26-1, 26-2, 26-3, 26-4, 26-5, 26-6, 27-1, 27-2, 27-3, 29-1, 29-2, 30, 31, 32-1, 32-2, 32-3, 33
Driver Operate Brake Torque	2, 3, 4, 5-1, 5-2, 5-3, 6-1, 6-2, 6-3, 8, 9, 10, 12, 13, 14, 15, 16, 17, 18-1, 18-2, 18-3, 18-4, 18-5, 18-6, 18-7, 18-8, 18-9, 18-10, 18-12, 18-14, 18-15, 19, 20-1, 20-2, 20-3, 20-4, 20-5, 20-6, 22, 23-1, 23-2, 23-3, 23-4, 24-1, 24-2, 25, 26-1, 26-2, 26-3, 26-4, 26-5, 26-6, 27-1, 27-2, 27-3, 29-1, 29-2, 30, 31, 32-1, 32-2, 32-3, 33
Yaw Rate Sensor Signal	2, 3, 4, 5-1, 5-2, 5-3, 6-1, 6-2, 6-3, 8, 9, 10, 12, 13, 14, 15, 16, 17, 18-1, 18-2, 18-3, 18-4, 18-5, 18-6, 18-7, 18-8, 18-9, 18-10, 18-12, 18-14, 18-15, 19, 20-1, 20-2, 20-3, 20-4, 20-5, 20-6, 22, 23-1, 23-2, 23-3, 23-4, 24-1, 24-2, 25, 26-1, 26-2, 26-3, 26-4, 26-5, 26-6, 27-1, 27-2, 27-3, 29-1, 29-2, 30, 31, 32-1, 32-2, 32-3, 33
Longitudinal G Sensor Signal	2, 3, 4, 5-1, 5-2, 5-3, 6-1, 6-2, 6-3, 8, 9, 10, 12, 13, 14, 15, 16, 17, 18-1, 18-2, 18-3, 18-4, 18-5, 18-6, 18-7, 18-8, 18-9, 18-10, 18-12, 18-14, 18-15, 19, 20-1, 20-2, 20-3, 20-4, 20-5, 20-6, 22, 23-1, 23-2, 23-3, 23-4, 24-1, 24-2, 25, 26-1, 26-2, 26-3, 26-4, 26-5, 26-6, 27-1, 27-2, 27-3, 29-1, 29-2, 30, 31, 32-1, 32-2, 32-3, 33
Lateral G Sensor Signal	2, 3, 4, 5-1, 5-2, 5-3, 6-1, 6-2, 6-3, 8, 9, 10, 12, 13, 14, 15, 16, 17, 18-1, 18-2, 18-3, 18-4, 18-5, 18-6, 18-7, 18-8, 18-9, 18-10, 18-12, 18-14, 18-15, 19, 20-1, 20-2, 20-3, 20-4, 20-5, 20-6, 22, 23-1, 23-2, 23-3, 23-4, 24-1, 24-2, 25, 26-1, 26-2, 26-3, 26-4, 26-5, 26-6, 27-1, 27-2, 27-3, 29-1, 29-2, 30, 31, 32-1, 32-2, 32-3, 33
Throttle Opening Ratio	2, 3, 4, 5-1, 5-2, 5-3, 6-1, 6-2, 6-3, 8, 9, 10, 12, 13, 14, 15, 16, 17, 18-1, 18-2, 18-3, 18-4, 18-5, 18-6, 18-7, 18-8, 18-9, 18-10, 18-12, 18-14, 18-15, 19, 20-1, 20-2, 20-3, 20-4, 20-5, 20-6, 22, 23-1, 23-2, 23-3, 23-4, 24-1, 24-2, 25, 26-1, 26-2, 26-3, 26-4, 26-5, 26-6, 27-1, 27-2, 27-3, 29-1, 29-2, 30, 31, 32-1, 32-2, 32-3, 33
Command Value of Fuel Injection Amount	2, 3, 4, 5-1, 5-2, 5-3, 6-1, 6-2, 6-3, 8, 9, 10, 12, 13, 14, 15, 16, 17, 18-1, 18-2, 18-3, 18-4, 18-5, 18-6, 18-7, 18-8, 18-9, 18-10, 18-12, 18-14, 18-15, 19, 20-1, 20-2, 20-3, 20-4, 20-5, 20-6, 22, 23-1, 23-2, 23-3, 23-4, 24-1, 24-2,

TESTER DISPLAY	TRIGGER ID NO.
	25, 26-1, 26-2, 26-3, 26-4, 26-5, 26-6, 27-1, 27-2, 27-3, 29-1, 29-2, 30, 31, 32-1, 32-2, 32-3, 33
Steering Signal	2, 3, 4, 5-1, 5-2, 5-3, 6-1, 6-2, 6-3, 8, 9, 10, 12, 13, 14, 15, 16, 17, 18-1, 18-2, 18-3, 18-4, 18-5, 18-6, 18-7, 18-8, 18-9, 18-10, 18-12, 18-14, 18-15, 19, 20-1, 20-2, 20-3, 20-4, 20-5, 20-6, 22, 23-1, 23-2, 23-3, 23-4, 24-1, 24-2, 25, 26-1, 26-2, 26-3, 26-4, 26-5, 26-6, 27-1, 27-2, 27-3, 29-1, 29-2, 30, 31, 32-1, 32-2, 32-3, 33
Cruise Data Reception Status	2, 3, 4, 5-1, 5-2, 5-3, 6-1, 6-2, 6-3, 8, 9, 10, 12, 13, 14, 15, 16, 17, 18-1, 18-2, 18-3, 18-4, 18-5, 18-6, 18-7, 18-8, 18-9, 18-10, 18-12, 18-14, 18-15, 19, 20-1, 20-2, 20-3, 20-4, 20-5, 20-6, 22, 23-1, 23-2, 23-3, 23-4, 24-1, 24-2, 25, 26-1, 26-2, 26-3, 26-4, 26-5, 26-6, 27-1, 27-2, 27-3, 29-1, 29-2, 30, 31, 32-1, 32-2, 32-3, 33
PCS_ON/OFF_SW State	2, 3, 4, 5-1, 5-2, 5-3, 6-1, 6-2, 6-3, 8, 9, 10, 12, 13, 14, 15, 16, 17, 18-1, 18-2, 18-3, 18-4, 18-5, 18-6, 18-7, 18-8, 18-9, 18-10, 18-12, 18-14, 18-15, 19, 20-1, 20-2, 20-3, 20-4, 20-5, 20-6, 22, 23-1, 23-2, 23-3, 23-4, 24-1, 24-2, 25, 26-1, 26-2, 26-3, 26-4, 26-5, 26-6, 27-1, 27-2, 27-3, 29-1, 29-2, 30, 31, 32-1, 32-2, 32-3, 33
PCS FPB Request Flag	2, 3, 4, 5-1, 5-2, 5-3, 6-1, 6-2, 6-3, 8, 9, 10, 12, 13, 14, 15, 16, 17, 18-1, 18-2, 18-3, 18-4, 18-5, 18-6, 18-7, 18-8, 18-9, 18-10, 18-12, 18-14, 18-15, 19, 20-1, 20-2, 20-3, 20-4, 20-5, 20-6, 22, 23-1, 23-2, 23-3, 23-4, 24-1, 24-2, 25, 26-1, 26-2, 26-3, 26-4, 26-5, 26-6, 27-1, 27-2, 27-3, 29-1, 29-2, 30, 31, 32-1, 32-2, 32-3, 33
Cruise Control	2, 3, 4, 5-1, 5-2, 5-3, 6-1, 6-2, 6-3, 8, 9, 10, 12, 13, 14, 15, 16, 17, 18-1, 18-2, 18-3, 18-4, 18-5, 18-6, 18-7, 18-8, 18-9, 18-10, 18-12, 18-14, 18-15, 19, 20-1, 20-2, 20-3, 20-4, 20-5, 20-6, 22, 23-1, 23-2, 23-3, 23-4, 24-1, 24-2, 25, 26-1, 26-2, 26-3, 26-4, 26-5, 26-6, 27-1, 27-2, 27-3, 29-1, 29-2, 30, 31, 32-1, 32-2, 32-3, 33
Under VSC Control	2, 3, 4, 5-1, 5-2, 5-3, 6-1, 6-2, 6-3, 8, 9, 10, 12, 13, 14, 15, 16, 17, 18-1, 18-2, 18-3, 18-4, 18-5, 18-6, 18-7, 18-8, 18-9, 18-10, 18-12, 18-14, 18-15, 19, 20-1, 20-2, 20-3, 20-4, 20-5, 20-6, 22, 23-1, 23-2, 23-3, 23-4, 24-1, 24-2, 25, 26-1, 26-2, 26-3, 26-4, 26-5, 26-6, 27-1, 27-2, 27-3, 29-1, 29-2, 30, 31, 32-1, 32-2, 32-3, 33
Under ABS Control	2, 3, 4, 5-1, 5-2, 5-3, 6-1, 6-2, 6-3, 8, 9, 10, 12, 13, 14, 15, 16, 17, 18-1, 18-2, 18-3, 18-4, 18-5, 18-6, 18-7, 18-8, 18-9, 18-10, 18-12, 18-14, 18-15, 19, 20-1, 20-2, 20-3, 20-4, 20-5, 20-6, 22, 23-1, 23-2, 23-3, 23-4, 24-1, 24-2, 25, 26-1, 26-2, 26-3, 26-4, 26-5, 26-6, 27-1, 27-2, 27-3, 29-1, 29-2, 30, 31, 32-1, 32-2, 32-3, 33
Under BOS Control	2, 3, 4, 5-1, 5-2, 5-3, 6-1, 6-2, 6-3, 8, 9, 10, 12, 13, 14, 15, 16, 17, 18-1, 18-2, 18-3, 18-4, 18-5, 18-6, 18-7, 18-8, 18-9, 18-10, 18-12, 18-14, 18-15, 19, 20-1, 20-2, 20-3, 20-4, 20-5, 20-6, 22, 23-1, 23-2, 23-3, 23-4, 24-1, 24-2, 25, 26-1, 26-2, 26-3, 26-4, 26-5, 26-6, 27-1, 27-2, 27-3, 29-1, 29-2, 30, 31, 32-1, 32-2, 32-3, 33
Under TRC Operation Flag	2, 3, 4, 5-1, 5-2, 5-3, 6-1, 6-2, 6-3, 8, 9, 10, 12, 13, 14, 15, 16, 17, 18-1, 18-2, 18-3, 18-4, 18-5, 18-6, 18-7, 18-8, 18-9, 18-10, 18-12, 18-14, 18-15, 19, 20-1, 20-2, 20-3, 20-4, 20-5, 20-6, 22, 23-1, 23-2, 23-3, 23-4, 24-1, 24-2, 25, 26-1, 26-2, 26-3, 26-4, 26-5, 26-6, 27-1, 27-2, 27-3, 29-1, 29-2, 30, 31, 32-1, 32-2, 32-3, 33

TESTER DISPLAY	TRIGGER ID NO.
PCS Reception Data Invalid Flag	2, 3, 4, 5-1, 5-2, 5-3, 6-1, 6-2, 6-3, 8, 9, 10, 12, 13, 14, 15, 16, 17, 18-1, 18-2, 18-3, 18-4, 18-5, 18-6, 18-7, 18-8, 18-9, 18-10, 18-12, 18-14, 18-15, 19, 20-1, 20-2, 20-3, 20-4, 20-5, 20-6, 22, 23-1, 23-2, 23-3, 23-4, 24-1, 24-2, 25, 26-1, 26-2, 26-3, 26-4, 26-5, 26-6, 27-1, 27-2, 27-3, 29-1, 29-2, 30, 31, 32-1, 32-2, 32-3, 33
PCS ALM Request Flag (PRE ALM Request)	2, 3, 4, 5-1, 5-2, 5-3, 6-1, 6-2, 6-3, 8, 9, 10, 12, 13, 14, 15, 16, 17, 18-1, 18-2, 18-3, 18-4, 18-5, 18-6, 18-7, 18-8, 18-9, 18-10, 18-12, 18-14, 18-15, 19, 20-1, 20-2, 20-3, 20-4, 20-5, 20-6, 22, 23-1, 23-2, 23-3, 23-4, 24-1, 24-2, 25, 26-1, 26-2, 26-3, 26-4, 26-5, 26-6, 27-1, 27-2, 27-3, 29-1, 29-2, 30, 31, 32-1, 32-2, 32-3, 33
PCS ALM Request Flag (Ordinary ALM Request)	2, 3, 4, 5-1, 5-2, 5-3, 6-1, 6-2, 6-3, 8, 9, 10, 12, 13, 14, 15, 16, 17, 18-1, 18-2, 18-3, 18-4, 18-5, 18-6, 18-7, 18-8, 18-9, 18-10, 18-12, 18-14, 18-15, 19, 20-1, 20-2, 20-3, 20-4, 20-5, 20-6, 22, 23-1, 23-2, 23-3, 23-4, 24-1, 24-2, 25, 26-1, 26-2, 26-3, 26-4, 26-5, 26-6, 27-1, 27-2, 27-3, 29-1, 29-2, 30, 31, 32-1, 32-2, 32-3, 33
PCS PBA Request Flag	2, 3, 4, 5-1, 5-2, 5-3, 6-1, 6-2, 6-3, 8, 9, 10, 12, 13, 14, 15, 16, 17, 18-1, 18-2, 18-3, 18-4, 18-5, 18-6, 18-7, 18-8, 18-9, 18-10, 18-12, 18-14, 18-15, 19, 20-1, 20-2, 20-3, 20-4, 20-5, 20-6, 22, 23-1, 23-2, 23-3, 23-4, 24-1, 24-2, 25, 26-1, 26-2, 26-3, 26-4, 26-5, 26-6, 27-1, 27-2, 27-3, 29-1, 29-2, 30, 31, 32-1, 32-2, 32-3, 33
PCS PB Request Flag	2, 3, 4, 5-1, 5-2, 5-3, 6-1, 6-2, 6-3, 8, 9, 10, 12, 13, 14, 15, 16, 17, 18-1, 18-2, 18-3, 18-4, 18-5, 18-6, 18-7, 18-8, 18-9, 18-10, 18-12, 18-14, 18-15, 19, 20-1, 20-2, 20-3, 20-4, 20-5, 20-6, 22, 23-1, 23-2, 23-3, 23-4, 24-1, 24-2, 25, 26-1, 26-2, 26-3, 26-4, 26-5, 26-6, 27-1, 27-2, 27-3, 29-1, 29-2, 30, 31, 32-1, 32-2, 32-3, 33
PCS Display (Control Status 2)	2, 3, 4, 5-1, 5-2, 5-3, 6-1, 6-2, 6-3, 8, 9, 10, 12, 13, 14, 15, 16, 17, 18-1, 18-2, 18-3, 18-4, 18-5, 18-6, 18-7, 18-8, 18-9, 18-10, 18-12, 18-14, 18-15, 19, 20-1, 20-2, 20-3, 20-4, 20-5, 20-6, 22, 23-1, 23-2, 23-3, 23-4, 24-1, 24-2, 25, 26-1, 26-2, 26-3, 26-4, 26-5, 26-6, 27-1, 27-2, 27-3, 29-1, 29-2, 30, 31, 32-1, 32-2, 32-3, 33
PCS Display (Control Status 1)	2, 3, 4, 5-1, 5-2, 5-3, 6-1, 6-2, 6-3, 8, 9, 10, 12, 13, 14, 15, 16, 17, 18-1, 18-2, 18-3, 18-4, 18-5, 18-6, 18-7, 18-8, 18-9, 18-10, 18-12, 18-14, 18-15, 19, 20-1, 20-2, 20-3, 20-4, 20-5, 20-6, 22, 23-1, 23-2, 23-3, 23-4, 24-1, 24-2, 25, 26-1, 26-2, 26-3, 26-4, 26-5, 26-6, 27-1, 27-2, 27-3, 29-1, 29-2, 30, 31, 32-1, 32-2, 32-3, 33
PCS Display (Object Recognition Status)	2, 3, 4, 5-1, 5-2, 5-3, 6-1, 6-2, 6-3, 8, 9, 10, 12, 13, 14, 15, 16, 17, 18-1, 18-2, 18-3, 18-4, 18-5, 18-6, 18-7, 18-8, 18-9, 18-10, 18-12, 18-14, 18-15, 19, 20-1, 20-2, 20-3, 20-4, 20-5, 20-6, 22, 23-1, 23-2, 23-3, 23-4, 24-1, 24-2, 25, 26-1, 26-2, 26-3, 26-4, 26-5, 26-6, 27-1, 27-2, 27-3, 29-1, 29-2, 30, 31, 32-1, 32-2, 32-3, 33
PCS Display (Milli-Meter Wave Radar Alignment Flag)	2, 3, 4, 5-1, 5-2, 5-3, 6-1, 6-2, 6-3, 8, 9, 10, 12, 13, 14, 15, 16, 17, 18-1, 18-2, 18-3, 18-4, 18-5, 18-6, 18-7, 18-8, 18-9, 18-10, 18-12, 18-14, 18-15, 19, 20-1, 20-2, 20-3, 20-4, 20-5, 20-6, 22, 23-1, 23-2, 23-3, 23-4, 24-1, 24-2, 25, 26-1, 26-2, 26-3, 26-4, 26-5, 26-6, 27-1, 27-2, 27-3, 29-1, 29-2, 30, 31, 32-1, 32-2, 32-3, 33
PCS Display (Camera Backlight Status)	2, 3, 4, 5-1, 5-2, 5-3, 6-1, 6-2, 6-3, 8, 9, 10, 12, 13, 14, 15, 16, 17, 18-1, 18-2, 18-3, 18-4, 18-5, 18-6, 18-7, 18-8, 18-9, 18-10, 18-12, 18-14, 18-15, 19, 20-1, 20-2, 20-3, 20-4, 20-5, 20-6, 22, 23-1, 23-2, 23-3, 23-4, 24-1, 24-2,

TESTER DISPLAY	TRIGGER ID NO.
	25, 26-1, 26-2, 26-3, 26-4, 26-5, 26-6, 27-1, 27-2, 27-3, 29-1, 29-2, 30, 31, 32-1, 32-2, 32-3, 33
PCS Display (Milli-Meter Wave Radar Low Voltage Status)	2, 3, 4, 5-1, 5-2, 5-3, 6-1, 6-2, 6-3, 8, 9, 10, 12, 13, 14, 15, 16, 17, 18-1, 18-2, 18-3, 18-4, 18-5, 18-6, 18-7, 18-8, 18-9, 18-10, 18-12, 18-14, 18-15, 19, 20-1, 20-2, 20-3, 20-4, 20-5, 20-6, 22, 23-1, 23-2, 23-3, 23-4, 24-1, 24-2, 25, 26-1, 26-2, 26-3, 26-4, 26-5, 26-6, 27-1, 27-2, 27-3, 29-1, 29-2, 30, 31, 32-1, 32-2, 32-3, 33
PCS Display (Sensor Recognition Status)	2, 3, 4, 5-1, 5-2, 5-3, 6-1, 6-2, 6-3, 8, 9, 10, 12, 13, 14, 15, 16, 17, 18-1, 18-2, 18-3, 18-4, 18-5, 18-6, 18-7, 18-8, 18-9, 18-10, 18-12, 18-14, 18-15, 19, 20-1, 20-2, 20-3, 20-4, 20-5, 20-6, 22, 23-1, 23-2, 23-3, 23-4, 24-1, 24-2, 25, 26-1, 26-2, 26-3, 26-4, 26-5, 26-6, 27-1, 27-2, 27-3, 29-1, 29-2, 30, 31, 32-1, 32-2, 32-3, 33
PCS Display (Temporarily not available)	2, 3, 4, 5-1, 5-2, 5-3, 6-1, 6-2, 6-3, 8, 9, 10, 12, 13, 14, 15, 16, 17, 18-1, 18-2, 18-3, 18-4, 18-5, 18-6, 18-7, 18-8, 18-9, 18-10, 18-12, 18-14, 18-15, 19, 20-1, 20-2, 20-3, 20-4, 20-5, 20-6, 22, 23-1, 23-2, 23-3, 23-4, 24-1, 24-2, 25, 26-1, 26-2, 26-3, 26-4, 26-5, 26-6, 27-1, 27-2, 27-3, 29-1, 29-2, 30, 31, 32-1, 32-2, 32-3, 33
PCS Display (Milli-Meter Wave Radar Dirt)	2, 3, 4, 5-1, 5-2, 5-3, 6-1, 6-2, 6-3, 8, 9, 10, 12, 13, 14, 15, 16, 17, 18-1, 18-2, 18-3, 18-4, 18-5, 18-6, 18-7, 18-8, 18-9, 18-10, 18-12, 18-14, 18-15, 19, 20-1, 20-2, 20-3, 20-4, 20-5, 20-6, 22, 23-1, 23-2, 23-3, 23-4, 24-1, 24-2, 25, 26-1, 26-2, 26-3, 26-4, 26-5, 26-6, 27-1, 27-2, 27-3, 29-1, 29-2, 30, 31, 32-1, 32-2, 32-3, 33
PCS Display (Diag Condition)	2, 3, 4, 5-1, 5-2, 5-3, 6-1, 6-2, 6-3, 8, 9, 10, 12, 13, 14, 15, 16, 17, 18-1, 18-2, 18-3, 18-4, 18-5, 18-6, 18-7, 18-8, 18-9, 18-10, 18-12, 18-14, 18-15, 19, 20-1, 20-2, 20-3, 20-4, 20-5, 20-6, 22, 23-1, 23-2, 23-3, 23-4, 24-1, 24-2, 25, 26-1, 26-2, 26-3, 26-4, 26-5, 26-6, 27-1, 27-2, 27-3, 29-1, 29-2, 30, 31, 32-1, 32-2, 32-3, 33
LDA Data Reception Status	2, 3, 4, 5-1, 5-2, 5-3, 6-1, 6-2, 6-3, 8, 9, 10, 12, 13, 14, 15, 16, 17, 18-1, 18-2, 18-3, 18-4, 18-5, 18-6, 18-7, 18-8, 18-9, 18-10, 18-12, 18-14, 18-15, 19, 20-1, 20-2, 20-3, 20-4, 20-5, 20-6, 22, 23-1, 23-2, 23-3, 23-4, 24-1, 24-2, 25, 26-1, 26-2, 26-3, 26-4, 26-5, 26-6, 27-1, 27-2, 27-3, 29-1, 29-2, 30, 31, 32-1, 32-2, 32-3, 33
LTA Data Reception Status	2, 3, 4, 5-1, 5-2, 5-3, 6-1, 6-2, 6-3, 8, 9, 10, 12, 13, 14, 15, 16, 17, 18-1, 18-2, 18-3, 18-4, 18-5, 18-6, 18-7, 18-8, 18-9, 18-10, 18-12, 18-14, 18-15, 19, 20-1, 20-2, 20-3, 20-4, 20-5, 20-6, 22, 23-1, 23-2, 23-3, 23-4, 24-1, 24-2, 25, 26-1, 26-2, 26-3, 26-4, 26-5, 26-6, 27-1, 27-2, 27-3, 29-1, 29-2, 30, 31, 32-1, 32-2, 32-3, 33
LCA Data Reception Status	2, 3, 4, 5-1, 5-2, 5-3, 6-1, 6-2, 6-3, 8, 9, 10, 12, 13, 14, 15, 16, 17, 18-1, 18-2, 18-3, 18-4, 18-5, 18-6, 18-7, 18-8, 18-9, 18-10, 18-12, 18-14, 18-15, 19, 20-1, 20-2, 20-3, 20-4, 20-5, 20-6, 22, 23-1, 23-2, 23-3, 23-4, 24-1, 24-2, 25, 26-1, 26-2, 26-3, 26-4, 26-5, 26-6, 27-1, 27-2, 27-3, 29-1, 29-2, 30, 31, 32-1, 32-2, 32-3, 33
Emergency Driving Stop System Data Reception Status	2, 3, 4, 5-1, 5-2, 5-3, 6-1, 6-2, 6-3, 8, 9, 10, 12, 13, 14, 15, 16, 17, 18-1, 18-2, 18-3, 18-4, 18-5, 18-6, 18-7, 18-8, 18-9, 18-10, 18-12, 18-14, 18-15, 19, 20-1, 20-2, 20-3, 20-4, 20-5, 20-6, 22, 23-1, 23-2, 23-3, 23-4, 24-1, 24-2, 25, 26-1, 26-2, 26-3, 26-4, 26-5, 26-6, 27-1, 27-2, 27-3, 29-1, 29-2, 30, 31, 32-1, 32-2, 32-3, 33

TESTER DISPLAY	TRIGGER ID NO.
Lane Departure Prevention Control	2, 3, 4, 5-1, 5-2, 5-3, 6-1, 6-2, 6-3, 8, 9, 10, 12, 13, 14, 15, 16, 17, 18-1, 18-2, 18-3, 18-4, 18-5, 18-6, 18-7, 18-8, 18-9, 18-10, 18-12, 18-14, 18-15, 19, 20-1, 20-2, 20-3, 20-4, 20-5, 20-6, 22, 23-1, 23-2, 23-3, 23-4, 24-1, 24-2, 25, 26-1, 26-2, 26-3, 26-4, 26-5, 26-6, 27-1, 27-2, 27-3, 29-1, 29-2, 30, 31, 32-1, 32-2, 32-3, 33
Lane Departure Monitoring	2, 3, 4, 5-1, 5-2, 5-3, 6-1, 6-2, 6-3, 8, 9, 10, 12, 13, 14, 15, 16, 17, 18-1, 18-2, 18-3, 18-4, 18-5, 18-6, 18-7, 18-8, 18-9, 18-10, 18-12, 18-14, 18-15, 19, 20-1, 20-2, 20-3, 20-4, 20-5, 20-6, 22, 23-1, 23-2, 23-3, 23-4, 24-1, 24-2, 25, 26-1, 26-2, 26-3, 26-4, 26-5, 26-6, 27-1, 27-2, 27-3, 29-1, 29-2, 30, 31, 32-1, 32-2, 32-3, 33
LDA Main Switch Status	2, 3, 4, 5-1, 5-2, 5-3, 6-1, 6-2, 6-3, 8, 9, 10, 12, 13, 14, 15, 16, 17, 18-1, 18-2, 18-3, 18-4, 18-5, 18-6, 18-7, 18-8, 18-9, 18-10, 18-12, 18-14, 18-15, 19, 20-1, 20-2, 20-3, 20-4, 20-5, 20-6, 22, 23-1, 23-2, 23-3, 23-4, 24-1, 24-2, 25, 26-1, 26-2, 26-3, 26-4, 26-5, 26-6, 27-1, 27-2, 27-3, 29-1, 29-2, 30, 31, 32-1, 32-2, 32-3, 33
Center Trace Control	2, 3, 4, 5-1, 5-2, 5-3, 6-1, 6-2, 6-3, 8, 9, 10, 12, 13, 14, 15, 16, 17, 18-1, 18-2, 18-3, 18-4, 18-5, 18-6, 18-7, 18-8, 18-9, 18-10, 18-12, 18-14, 18-15, 19, 20-1, 20-2, 20-3, 20-4, 20-5, 20-6, 22, 23-1, 23-2, 23-3, 23-4, 24-1, 24-2, 25, 26-1, 26-2, 26-3, 26-4, 26-5, 26-6, 27-1, 27-2, 27-3, 29-1, 29-2, 30, 31, 32-1, 32-2, 32-3, 33
LTA Main Switch Status	2, 3, 4, 5-1, 5-2, 5-3, 6-1, 6-2, 6-3, 8, 9, 10, 12, 13, 14, 15, 16, 17, 18-1, 18-2, 18-3, 18-4, 18-5, 18-6, 18-7, 18-8, 18-9, 18-10, 18-12, 18-14, 18-15, 19, 20-1, 20-2, 20-3, 20-4, 20-5, 20-6, 22, 23-1, 23-2, 23-3, 23-4, 24-1, 24-2, 25, 26-1, 26-2, 26-3, 26-4, 26-5, 26-6, 27-1, 27-2, 27-3, 29-1, 29-2, 30, 31, 32-1, 32-2, 32-3, 33
Turn Signal State	2, 3, 4, 5-1, 5-2, 5-3, 6-1, 6-2, 6-3, 8, 9, 10, 12, 13, 14, 15, 16, 17, 18-1, 18-2, 18-3, 18-4, 18-5, 18-6, 18-7, 18-8, 18-9, 18-10, 18-12, 18-14, 18-15, 19, 20-1, 20-2, 20-3, 20-4, 20-5, 20-6, 22, 23-1, 23-2, 23-3, 23-4, 24-1, 24-2, 25, 26-1, 26-2, 26-3, 26-4, 26-5, 26-6, 27-1, 27-2, 27-3, 29-1, 29-2, 30, 31, 32-1, 32-2, 32-3, 33
EPS Torque Sensor Value	2, 3, 4, 5-1, 5-2, 5-3, 6-1, 6-2, 6-3, 8, 9, 10, 12, 13, 14, 15, 16, 17, 18-1, 18-2, 18-3, 18-4, 18-5, 18-6, 18-7, 18-8, 18-9, 18-10, 18-12, 18-14, 18-15, 19, 20-1, 20-2, 20-3, 20-4, 20-5, 20-6, 22, 23-1, 23-2, 23-3, 23-4, 24-1, 24-2, 25, 26-1, 26-2, 26-3, 26-4, 26-5, 26-6, 27-1, 27-2, 27-3, 29-1, 29-2, 30, 31, 32-1, 32-2, 32-3, 33
LCA Control State	2, 3, 4, 5-1, 5-2, 5-3, 6-1, 6-2, 6-3, 8, 9, 10, 12, 13, 14, 15, 16, 17, 18-1, 18-2, 18-3, 18-4, 18-5, 18-6, 18-7, 18-8, 18-9, 18-10, 18-12, 18-14, 18-15, 19, 20-1, 20-2, 20-3, 20-4, 20-5, 20-6, 22, 23-1, 23-2, 23-3, 23-4, 24-1, 24-2, 25, 26-1, 26-2, 26-3, 26-4, 26-5, 26-6, 27-1, 27-2, 27-3, 29-1, 29-2, 30, 31, 32-1, 32-2, 32-3, 33
Emergency Driving Stop System Horn Status	2, 3, 4, 5-1, 5-2, 5-3, 6-1, 6-2, 6-3, 8, 9, 10, 12, 13, 14, 15, 16, 17, 18-1, 18-2, 18-3, 18-4, 18-5, 18-6, 18-7, 18-8, 18-9, 18-10, 18-12, 18-14, 18-15, 19, 20-1, 20-2, 20-3, 20-4, 20-5, 20-6, 22, 23-1, 23-2, 23-3, 23-4, 24-1, 24-2, 25, 26-1, 26-2, 26-3, 26-4, 26-5, 26-6, 27-1, 27-2, 27-3, 29-1, 29-2, 30, 31, 32-1, 32-2, 32-3, 33
Emergency Driving Stop System Hazard Request	2, 3, 4, 5-1, 5-2, 5-3, 6-1, 6-2, 6-3, 8, 9, 10, 12, 13, 14, 15, 16, 17, 18-1, 18-2, 18-3, 18-4, 18-5, 18-6, 18-7, 18-8, 18-9, 18-10, 18-12, 18-14, 18-15, 19, 20-1, 20-2, 20-3, 20-4, 20-5, 20-6, 22, 23-1, 23-2, 23-3, 23-4, 24-1, 24-2,

TESTER DISPLAY	TRIGGER ID NO.
	25, 26-1, 26-2, 26-3, 26-4, 26-5, 26-6, 27-1, 27-2, 27-3, 29-1, 29-2, 30, 31, 32-1, 32-2, 32-3, 33
Emergency Driving Stop System Phase	2, 3, 4, 5-1, 5-2, 5-3, 6-1, 6-2, 6-3, 8, 9, 10, 12, 13, 14, 15, 16, 17, 18-1, 18-2, 18-3, 18-4, 18-5, 18-6, 18-7, 18-8, 18-9, 18-10, 18-12, 18-14, 18-15, 19, 20-1, 20-2, 20-3, 20-4, 20-5, 20-6, 22, 23-1, 23-2, 23-3, 23-4, 24-1, 24-2, 25, 26-1, 26-2, 26-3, 26-4, 26-5, 26-6, 27-1, 27-2, 27-3, 29-1, 29-2, 30, 31, 32-1, 32-2, 32-3, 33
Powering IG Status 1	2, 3, 4, 5-1, 5-2, 5-3, 6-1, 6-2, 6-3, 8, 9, 10, 12, 13, 14, 15, 16, 17, 18-1, 18-2, 18-3, 18-4, 18-5, 18-6, 18-7, 18-8, 18-9, 18-10, 18-12, 18-14, 18-15, 19, 20-1, 20-2, 20-3, 20-4, 20-5, 20-6, 22, 23-1, 23-2, 23-3, 23-4, 24-1, 24-2, 25, 26-1, 26-2, 26-3, 26-4, 26-5, 26-6, 27-1, 27-2, 27-3, 29-1, 29-2, 30, 31, 32-1, 32-2, 32-3, 33
Powering IG Status 2	2, 3, 4, 5-1, 5-2, 5-3, 6-1, 6-2, 6-3, 8, 9, 10, 12, 13, 14, 15, 16, 17, 18-1, 18-2, 18-3, 18-4, 18-5, 18-6, 18-7, 18-8, 18-9, 18-10, 18-12, 18-14, 18-15, 19, 20-1, 20-2, 20-3, 20-4, 20-5, 20-6, 22, 23-1, 23-2, 23-3, 23-4, 24-1, 24-2, 25, 26-1, 26-2, 26-3, 26-4, 26-5, 26-6, 27-1, 27-2, 27-3, 29-1, 29-2, 30, 31, 32-1, 32-2, 32-3, 33
Advanced Park Flag	2, 3, 4, 5-1, 5-2, 5-3, 6-1, 6-2, 6-3, 8, 9, 10, 12, 13, 14, 15, 16, 17, 18-1, 18-2, 18-3, 18-4, 18-5, 18-6, 18-7, 18-8, 18-9, 18-10, 18-12, 18-14, 18-15, 19, 20-1, 20-2, 20-3, 20-4, 20-5, 20-6, 22, 23-1, 23-2, 23-3, 23-4, 24-1, 24-2, 25, 26-1, 26-2, 26-3, 26-4, 26-5, 26-6, 27-1, 27-2, 27-3, 29-1, 29-2, 30, 31, 32-1, 32-2, 32-3, 33
Support Target Road	2, 3, 4, 5-1, 5-2, 5-3, 6-1, 6-2, 6-3, 8, 9, 10, 12, 13, 14, 15, 16, 17, 18-1, 18-2, 18-3, 18-4, 18-5, 18-6, 18-7, 18-8, 18-9, 18-10, 18-12, 18-14, 18-15, 19, 20-1, 20-2, 20-3, 20-4, 20-5, 20-6, 22, 23-1, 23-2, 23-3, 23-4, 24-1, 24-2, 25, 26-1, 26-2, 26-3, 26-4, 26-5, 26-6, 27-1, 27-2, 27-3, 29-1, 29-2, 30, 31, 32-1, 32-2, 32-3, 33
RSC Data Reception Status	2, 3, 4, 5-1, 5-2, 5-3, 6-1, 6-2, 6-3, 8, 9, 10, 12, 13, 14, 15, 16, 17, 18-1, 18-2, 18-3, 18-4, 18-5, 18-6, 18-7, 18-8, 18-9, 18-10, 18-12, 18-14, 18-15, 19, 20-1, 20-2, 20-3, 20-4, 20-5, 20-6, 22, 23-1, 23-2, 23-3, 23-4, 24-1, 24-2, 25, 26-1, 26-2, 26-3, 26-4, 26-5, 26-6, 27-1, 27-2, 27-3, 29-1, 29-2, 30, 31, 32-1, 32-2, 32-3, 33
RSC Level	2, 3, 4, 5-1, 5-2, 5-3, 6-1, 6-2, 6-3, 8, 9, 10, 12, 13, 14, 15, 16, 17, 18-1, 18-2, 18-3, 18-4, 18-5, 18-6, 18-7, 18-8, 18-9, 18-10, 18-12, 18-14, 18-15, 19, 20-1, 20-2, 20-3, 20-4, 20-5, 20-6, 22, 23-1, 23-2, 23-3, 23-4, 24-1, 24-2, 25, 26-1, 26-2, 26-3, 26-4, 26-5, 26-6, 27-1, 27-2, 27-3, 29-1, 29-2, 30, 31, 32-1, 32-2, 32-3, 33
RSC State	2, 3, 4, 5-1, 5-2, 5-3, 6-1, 6-2, 6-3, 8, 9, 10, 12, 13, 14, 15, 16, 17, 18-1, 18-2, 18-3, 18-4, 18-5, 18-6, 18-7, 18-8, 18-9, 18-10, 18-12, 18-14, 18-15, 19, 20-1, 20-2, 20-3, 20-4, 20-5, 20-6, 22, 23-1, 23-2, 23-3, 23-4, 24-1, 24-2, 25, 26-1, 26-2, 26-3, 26-4, 26-5, 26-6, 27-1, 27-2, 27-3, 29-1, 29-2, 30, 31, 32-1, 32-2, 32-3, 33
Driver Classification	2, 3, 4, 5-1, 5-2, 5-3, 6-1, 6-2, 6-3, 8, 9, 10, 12, 13, 14, 15, 16, 17, 18-1, 18-2, 18-3, 18-4, 18-5, 18-6, 18-7, 18-8, 18-9, 18-10, 18-12, 18-14, 18-15, 19, 20-1, 20-2, 20-3, 20-4, 20-5, 20-6, 22, 23-1, 23-2, 23-3, 23-4, 24-1, 24-2, 25, 26-1, 26-2, 26-3, 26-4, 26-5, 26-6, 27-1, 27-2, 27-3, 29-1, 29-2, 30, 31, 32-1, 32-2, 32-3, 33

TESTER DISPLAY	TRIGGER ID NO.
EPB Switch	2, 3, 4, 5-1, 5-2, 5-3, 6-1, 6-2, 6-3, 8, 9, 10, 12, 13, 14, 15, 16, 17, 18-1, 18-2, 18-3, 18-4, 18-5, 18-6, 18-7, 18-8, 18-9, 18-10, 18-12, 18-14, 18-15, 19, 20-1, 20-2, 20-3, 20-4, 20-5, 20-6, 22, 23-1, 23-2, 23-3, 23-4, 24-1, 24-2, 25, 26-1, 26-2, 26-3, 26-4, 26-5, 26-6, 27-1, 27-2, 27-3, 29-1, 29-2, 30, 31, 32-1, 32-2, 32-3, 33
Pinion Angle	2, 3, 4, 5-1, 5-2, 5-3, 6-1, 6-2, 6-3, 8, 9, 10, 12, 13, 14, 15, 16, 17, 18-1, 18-2, 18-3, 18-4, 18-5, 18-6, 18-7, 18-8, 18-9, 18-10, 18-12, 18-14, 18-15, 19, 20-1, 20-2, 20-3, 20-4, 20-5, 20-6, 22, 23-1, 23-2, 23-3, 23-4, 24-1, 24-2, 25, 26-1, 26-2, 26-3, 26-4, 26-5, 26-6, 27-1, 27-2, 27-3, 29-1, 29-2, 30, 31, 32-1, 32-2, 32-3, 33
Rear Steering Angle	2, 3, 4, 5-1, 5-2, 5-3, 6-1, 6-2, 6-3, 8, 9, 10, 12, 13, 14, 15, 16, 17, 18-1, 18-2, 18-3, 18-4, 18-5, 18-6, 18-7, 18-8, 18-9, 18-10, 18-12, 18-14, 18-15, 19, 20-1, 20-2, 20-3, 20-4, 20-5, 20-6, 22, 23-1, 23-2, 23-3, 23-4, 24-1, 24-2, 25, 26-1, 26-2, 26-3, 26-4, 26-5, 26-6, 27-1, 27-2, 27-3, 29-1, 29-2, 30, 31, 32-1, 32-2, 32-3, 33
Shift Gear	2, 3, 4, 5-1, 5-2, 5-3, 6-1, 6-2, 6-3, 8, 9, 10, 12, 13, 15, 16
Drive Mode Select Signal	2, 3, 4, 5-1, 5-2, 5-3, 6-1, 6-2, 6-3, 8, 9, 10, 12, 13, 15, 16
Valid/Invalid of EV Mode	2, 3, 4, 5-1, 5-2, 5-3, 6-1, 6-2, 6-3, 8, 9, 10, 12, 13, 15, 16
EV Mode	2, 3, 4, 5-1, 5-2, 5-3, 6-1, 6-2, 6-3, 8, 9, 10, 12, 13, 15, 16
Valid/Invalid of TRC/VSC OFF Lamp	2, 3, 4, 5-1, 5-2, 5-3, 6-1, 6-2, 6-3, 8, 9, 10, 12, 13, 15, 16
TRC OFF Lamp	2, 3, 4, 5-1, 5-2, 5-3, 6-1, 6-2, 6-3, 8, 9, 10, 12, 13, 15, 16
VSC OFF Lamp	2, 3, 4, 5-1, 5-2, 5-3, 6-1, 6-2, 6-3, 8, 9, 10, 12, 13, 15, 16
Valid/Invalid of Driving Mode	2, 3, 4, 5-1, 5-2, 5-3, 6-1, 6-2, 6-3, 8, 9, 10, 12, 13, 15, 16
SNOW Mode	2, 3, 4, 5-1, 5-2, 5-3, 6-1, 6-2, 6-3, 8, 9, 10, 12, 13, 15, 16
Driving Mode	2, 3, 4, 5-1, 5-2, 5-3, 6-1, 6-2, 6-3, 8, 9, 10, 12, 13, 15, 16
Engine Load Factor	2, 3, 4, 5-1, 5-2, 5-3, 6-1, 6-2, 6-3, 8, 9, 10
READY Signal	2, 3, 4, 5-1, 5-2, 5-3, 6-1, 6-2, 6-3, 8, 9, 10, 12, 13, 15, 16
Gear Position Signal	2, 3, 4, 5-1, 5-2, 5-3, 6-1, 6-2, 6-3, 8, 9, 10
Under VDIM Control	12, 13, 14, 15, 16, 24-1, 24-2
Under SCB Control	2, 3, 4, 5-1, 5-2, 5-3, 6-1, 6-2, 6-3, 8, 9, 10, 24-1, 24-2
Under the Shift Change DSC Operation	5-1, 5-2, 5-3, 6-1, 6-2, 6-3, 8, 9, 10
Turbine RPM/Input Shaft RPM	2, 3, 4, 5-1, 5-2, 5-3, 6-1, 6-2, 6-3, 8, 9, 10
FR Wheel Speed	12, 13, 14, 15, 16, 23-1, 23-2, 23-3, 23-4, 24-1, 24-2
FL Wheel Speed	12, 13, 14, 15, 16, 23-1, 23-2, 23-3, 23-4, 24-1, 24-2
RR Wheel Speed	12, 13, 14, 15, 16, 23-1, 23-2, 23-3, 23-4, 24-1, 24-2
RL Wheel Speed	12, 13, 14, 15, 16, 23-1, 23-2, 23-3, 23-4, 24-1, 24-2
Trigger Judgement Status	17, 25, 27-1, 27-2, 27-3, 30

TESTER DISPLAY	TRIGGER ID NO.
Driving Force Demand Judgment Flag	17, 25, 27-1, 27-2, 27-3, 30
Cruise System	17, 25, 27-1, 27-2, 27-3, 30
Cruise System (ACC)	17, 25, 27-1, 27-2, 27-3, 30
Cruise Control Res/Accel SW	17, 25, 27-1, 27-2, 27-3, 30
Cruise Control Set/Coast SW	17, 25, 27-1, 27-2, 27-3, 30
Cruise Control Cancel SW	17, 25, 27-1, 27-2, 27-3, 30
Cruise Control Brake SW	17, 25, 27-1, 27-2, 27-3, 30
Cruise Control D Signal	17, 25, 27-1, 27-2, 27-3, 30
Cruise Control Main SW	17, 25, 27-1, 27-2, 27-3, 30
Cruise Control Set Speed	17, 25, 27-1, 27-2, 27-3, 30
Vehicle Speed (during Cruise Control)	17, 25, 27-1, 27-2, 27-3, 30
Cruise Control Request Value	17, 25, 27-1, 27-2, 27-3, 30
ACC Data Reception Status	17, 25, 27-1, 27-2, 27-3, 30
ACC Trigger Signal	17, 25, 27-1, 27-2, 27-3, 30
ACC Deceleration Fluctuation	17, 25, 27-1, 27-2, 27-3, 30
ACC Selection Duration	17, 25, 27-1, 27-2, 27-3, 30
ACC Radar Axis Yaw	17, 25, 27-1, 27-2, 27-3, 30
ACC Camera Axis Yaw	17, 25, 27-1, 27-2, 27-3, 30
ACC Set Vehicle Following Mode	17, 25, 27-1, 27-2, 27-3, 30
ACC Curve R	17, 25, 27-1, 27-2, 27-3, 30
ACC Target Number	17, 25, 27-1, 27-2, 27-3, 30
ACC Target Radar Status	17, 25, 27-1, 27-2, 27-3, 30
ACC Target Camera Status	17, 25, 27-1, 27-2, 27-3, 30
ACC Target Distance	17, 25, 27-1, 27-2, 27-3, 30
ACC Target Condition	17, 25, 27-1, 27-2, 27-3, 30
ACC Target Relative Velocity	17, 25, 27-1, 27-2, 27-3, 30
ACC Target Lateral Position	17, 25, 27-1, 27-2, 27-3, 30
ACC Target Lateral Relative Velocity	17, 25, 27-1, 27-2, 27-3, 30
ACC Approach Warning	17, 25, 27-1, 27-2, 27-3, 30
ACC Acceleration Request	17, 25, 27-1, 27-2, 27-3, 30
Emergency Steering Assist Request Flag	18-1, 18-2, 18-3, 18-4, 18-5, 18-6, 18-7, 18-8, 18-9, 18-10, 18-12, 18-14, 18-15, 25, 27-1, 27-2, 27-3
Active Assist for Seat Belt Request Flag	18-1, 18-2, 18-3, 18-4, 18-5, 18-6, 18-7, 18-8, 18-9, 18-10, 18-12, 18-14, 18-15, 25, 27-1, 27-2, 27-3

TESTER DISPLAY	TRIGGER ID NO.
PCS Brake Operation Preparation Request Flag	18-1, 18-2, 18-3, 18-4, 18-5, 18-6, 18-7, 18-8, 18-9, 18-10, 18-12, 18-14, 18-15, 25, 27-1, 27-2, 27-3
Stop Lamp Lighting Request Flag	18-1, 18-2, 18-3, 18-4, 18-5, 18-6, 18-7, 18-8, 18-9, 18-10, 18-12, 18-14, 18-15, 25, 27-1, 27-2, 27-3
PCS Brake Hold Request Flag	18-1, 18-2, 18-3, 18-4, 18-5, 18-6, 18-7, 18-8, 18-9, 18-10, 18-12, 18-14, 18-15, 25, 27-1, 27-2, 27-3
Collision Avoidance Assist 3	18-1, 18-2, 18-3, 18-4, 18-5, 18-6, 18-7, 18-8, 18-9, 18-10, 18-12, 18-14, 18-15, 25, 27-1, 27-2, 27-3
Collision Avoidance Assist 2	18-1, 18-2, 18-3, 18-4, 18-5, 18-6, 18-7, 18-8, 18-9, 18-10, 18-12, 18-14, 18-15, 25, 27-1, 27-2, 27-3
Collision Avoidance Assist 1	18-1, 18-2, 18-3, 18-4, 18-5, 18-6, 18-7, 18-8, 18-9, 18-10, 18-12, 18-14, 18-15, 25, 27-1, 27-2, 27-3
Target Distance	18-1, 18-2, 18-3, 18-4, 18-5, 18-6, 18-7, 18-8, 18-9, 18-10, 18-12, 18-14, 18-15, 25, 27-1, 27-2, 27-3
Target Relative Velocity	18-1, 18-2, 18-3, 18-4, 18-5, 18-6, 18-7, 18-8, 18-9, 18-10, 18-12, 18-14, 18-15, 25, 27-1, 27-2, 27-3
Target Lateral Position	18-1, 18-2, 18-3, 18-4, 18-5, 18-6, 18-7, 18-8, 18-9, 18-10, 18-12, 18-14, 18-15, 25, 27-1, 27-2, 27-3
Target Object Number	18-1, 18-2, 18-3, 18-4, 18-5, 18-6, 18-7, 18-8, 18-9, 18-10, 18-12, 18-14, 18-15, 25, 27-1, 27-2, 27-3
Relative Acceleration for Control Target	18-1, 18-2, 18-3, 18-4, 18-5, 18-6, 18-7, 18-8, 18-9, 18-10, 18-12, 18-14, 18-15, 25, 27-1, 27-2, 27-3
Predicted Time to Collision 1 for Control Target	18-1, 18-2, 18-3, 18-4, 18-5, 18-6, 18-7, 18-8, 18-9, 18-10, 18-12, 18-14, 18-15, 25, 27-1, 27-2, 27-3, 29-1, 29-2
Predicted Time to Collision 2 for Control Target	18-1, 18-2, 18-3, 18-4, 18-5, 18-6, 18-7, 18-8, 18-9, 18-10, 18-12, 18-14, 18-15, 25, 27-1, 27-2, 27-3, 29-1, 29-2
Predicted Time to Collision Status for Control Target	18-1, 18-2, 18-3, 18-4, 18-5, 18-6, 18-7, 18-8, 18-9, 18-10, 18-12, 18-14, 18-15, 25, 27-1, 27-2, 27-3
Sensor Recognition Status for Control Target	18-1, 18-2, 18-3, 18-4, 18-5, 18-6, 18-7, 18-8, 18-9, 18-10, 18-12, 18-14, 18-15, 25, 27-1, 27-2, 27-3
Type of the Object for Control Target	18-1, 18-2, 18-3, 18-4, 18-5, 18-6, 18-7, 18-8, 18-9, 18-10, 18-12, 18-14, 18-15, 25, 27-1, 27-2, 27-3, 29-1, 29-2
PCS ALM Mode Status	18-1, 18-2, 18-3, 18-4, 18-5, 18-6, 18-7, 18-8, 18-9, 18-10, 18-12, 18-14, 18-15, 25, 27-1, 27-2, 27-3
PCS Guard Status C	18-1, 18-2, 18-3, 18-4, 18-5, 18-6, 18-7, 18-8, 18-9, 18-10, 18-12, 18-14, 18-15, 25, 27-1, 27-2, 27-3
PCS Guard Status B	18-1, 18-2, 18-3, 18-4, 18-5, 18-6, 18-7, 18-8, 18-9, 18-10, 18-12, 18-14, 18-15, 25, 27-1, 27-2, 27-3
PCS Guard Status A	18-1, 18-2, 18-3, 18-4, 18-5, 18-6, 18-7, 18-8, 18-9, 18-10, 18-12, 18-14, 18-15, 25, 27-1, 27-2, 27-3
Estimated Curve Radius	18-1, 18-2, 18-3, 18-4, 18-5, 18-6, 18-7, 18-8, 18-9, 18-10, 18-12, 18-14, 18-15, 25, 27-1, 27-2, 27-3

TESTER DISPLAY	TRIGGER ID NO.
Target Lateral Speed	18-1, 18-2, 18-3, 18-4, 18-5, 18-6, 18-7, 18-8, 18-9, 18-10, 18-12, 18-14, 18-15, 25, 27-1, 27-2, 27-3
PCS Brake Assist Level	18-1, 18-2, 18-3, 18-4, 18-5, 18-6, 18-7, 18-8, 18-9, 18-10, 18-12, 18-14, 18-15, 25, 27-1, 27-2, 27-3
PCS Cancel Status	18-1, 18-2, 18-3, 18-4, 18-5, 18-6, 18-7, 18-8, 18-9, 18-10, 18-12, 18-14, 18-15, 25, 27-1, 27-2, 27-3
Driver Operation Status	18-1, 18-2, 18-3, 18-4, 18-5, 18-6, 18-7, 18-8, 18-9, 18-10, 18-12, 18-14, 18-15, 25, 27-1, 27-2, 27-3
Over Constant Longitudinal G Sensor Signal Value Detection	18-1, 18-2, 18-3, 18-4, 18-5, 18-6, 18-7, 18-8, 18-9, 18-10, 18-12, 18-14, 18-15, 25, 27-1, 27-2, 27-3
Over Constant Lateral G Sensor Signal Value Detection	18-1, 18-2, 18-3, 18-4, 18-5, 18-6, 18-7, 18-8, 18-9, 18-10, 18-12, 18-14, 18-15, 25, 27-1, 27-2, 27-3
Over Constant RR or RA Value Detection	18-1, 18-2, 18-3, 18-4, 18-5, 18-6, 18-7, 18-8, 18-9, 18-10, 18-12, 18-14, 18-15, 25, 27-1, 27-2, 27-3
Sensor Detection Status 1	18-1, 18-2, 18-3, 18-4, 18-5, 18-6, 18-7, 18-8, 18-9, 18-10, 18-12, 18-14, 18-15, 25, 27-1, 27-2, 27-3
Sensor Detection Status 2	18-1, 18-2, 18-3, 18-4, 18-5, 18-6, 18-7, 18-8, 18-9, 18-10, 18-12, 18-14, 18-15, 25, 27-1, 27-2, 27-3
Stereo Camera Reception Data Invalid Flag	18-1, 18-2, 18-3, 18-4, 18-5, 18-6, 18-7, 18-8, 18-9, 18-10, 18-12, 18-14, 18-15, 25, 27-1, 27-2, 27-3
PST Request Flag	18-1, 18-2, 18-3, 18-4, 18-5, 18-6, 18-7, 18-8, 18-9, 18-10, 18-12, 18-14, 18-15, 25, 27-1, 27-2, 27-3
PST Target Lateral Position	18-1, 18-2, 18-3, 18-4, 18-5, 18-6, 18-7, 18-8, 18-9, 18-10, 18-12, 18-14, 18-15, 25, 27-1, 27-2, 27-3
SCS Steering Angle (Enhancing)	18-1, 18-2, 18-3, 18-4, 18-5, 18-6, 18-7, 18-8, 18-9, 18-10, 18-12, 18-14, 18-15, 25, 27-1, 27-2, 27-3
PCS Target TTS	18-1, 18-2, 18-3, 18-4, 18-5, 18-6, 18-7, 18-8, 18-9, 18-10, 18-12, 18-14, 18-15, 25, 27-1, 27-2, 27-3
PCS Target TTB	18-1, 18-2, 18-3, 18-4, 18-5, 18-6, 18-7, 18-8, 18-9, 18-10, 18-12, 18-14, 18-15, 25, 27-1, 27-2, 27-3
PCS Target Candidate Status 1	18-1, 18-2, 18-3, 18-4, 18-5, 18-6, 18-7, 18-8, 18-9, 18-10, 18-12, 18-14, 18-15, 25, 27-1, 27-2, 27-3
PB Control Enable Flag	18-1, 18-2, 18-3, 18-4, 18-5, 18-6, 18-7, 18-8, 18-9, 18-10, 18-12, 18-14, 18-15, 25, 27-1, 27-2, 27-3
PB Control Prohibit Flag	18-1, 18-2, 18-3, 18-4, 18-5, 18-6, 18-7, 18-8, 18-9, 18-10, 18-12, 18-14, 18-15, 25, 27-1, 27-2, 27-3
PB Control Start Flag	18-1, 18-2, 18-3, 18-4, 18-5, 18-6, 18-7, 18-8, 18-9, 18-10, 18-12, 18-14, 18-15, 25, 27-1, 27-2, 27-3
PB Control Cancel Flag	18-1, 18-2, 18-3, 18-4, 18-5, 18-6, 18-7, 18-8, 18-9, 18-10, 18-12, 18-14, 18-15, 25, 27-1, 27-2, 27-3
PCS Target Candidate Status 4	18-1, 18-2, 18-3, 18-4, 18-5, 18-6, 18-7, 18-8, 18-9, 18-10, 18-12, 18-14, 18-15, 25, 27-1, 27-2, 27-3

TESTER DISPLAY	TRIGGER ID NO.
PCS Target Candidate Status 3	18-1, 18-2, 18-3, 18-4, 18-5, 18-6, 18-7, 18-8, 18-9, 18-10, 18-12, 18-14, 18-15, 25, 27-1, 27-2, 27-3
PCS Target Candidate Status 2	18-1, 18-2, 18-3, 18-4, 18-5, 18-6, 18-7, 18-8, 18-9, 18-10, 18-12, 18-14, 18-15, 25, 27-1, 27-2, 27-3
Kind of PCS System	18-1, 18-2, 18-3, 18-4, 18-5, 18-6, 18-7, 18-8, 18-9, 18-10, 18-12, 18-14, 18-15, 25, 27-1, 27-2, 27-3
Outside Lane Status	18-1, 18-2, 18-3, 18-4, 18-5, 18-6, 18-7, 18-8, 18-9, 18-10, 18-12, 18-14, 18-15, 25, 27-1, 27-2, 27-3
PST ETTC	18-1, 18-2, 18-3, 18-4, 18-5, 18-6, 18-7, 18-8, 18-9, 18-10, 18-12, 18-14, 18-15, 25, 27-1, 27-2, 27-3
Camera Load Face Detection	18-1, 18-2, 18-3, 18-4, 18-5, 18-6, 18-7, 18-8, 18-9, 18-10, 18-12, 18-14, 18-15, 25, 27-1, 27-2, 27-3
PST Obstacle Status	18-1, 18-2, 18-3, 18-4, 18-5, 18-6, 18-7, 18-8, 18-9, 18-10, 18-12, 18-14, 18-15, 25, 27-1, 27-2, 27-3
Time to Lane Crossing	18-1, 18-2, 18-3, 18-4, 18-5, 18-6, 18-7, 18-8, 18-9, 18-10, 18-12, 18-14, 18-15, 25, 27-1, 27-2, 27-3
Front Side Radar Target Object Number	18-1, 18-2, 18-3, 18-4, 18-5, 18-6, 18-7, 18-8, 18-9, 18-10, 18-12, 18-14, 18-15, 25, 27-1, 27-2, 27-3
Front Side Radar Internal Status	18-1, 18-2, 18-3, 18-4, 18-5, 18-6, 18-7, 18-8, 18-9, 18-10, 18-12, 18-14, 18-15, 25, 27-1, 27-2, 27-3
Front Side Radar Predicted Time to Collision for Control Target	18-1, 18-2, 18-3, 18-4, 18-5, 18-6, 18-7, 18-8, 18-9, 18-10, 18-12, 18-14, 18-15, 25, 27-1, 27-2, 27-3
Caution SW	18-1, 18-2, 18-3, 18-4, 18-5, 18-6, 18-7, 18-8, 18-9, 18-10, 18-12, 18-14, 18-15, 25, 27-1, 27-2, 27-3
Front Side Radar Target Relative Velocity X	18-1, 18-2, 18-3, 18-4, 18-5, 18-6, 18-7, 18-8, 18-9, 18-10, 18-12, 18-14, 18-15, 25, 27-1, 27-2, 27-3
Front Side Radar Target Relative Velocity Y	18-1, 18-2, 18-3, 18-4, 18-5, 18-6, 18-7, 18-8, 18-9, 18-10, 18-12, 18-14, 18-15, 25, 27-1, 27-2, 27-3
Front Side Radar Target Distance X	18-1, 18-2, 18-3, 18-4, 18-5, 18-6, 18-7, 18-8, 18-9, 18-10, 18-12, 18-14, 18-15, 25, 27-1, 27-2, 27-3
Front Side Radar Target Distance Y	18-1, 18-2, 18-3, 18-4, 18-5, 18-6, 18-7, 18-8, 18-9, 18-10, 18-12, 18-14, 18-15, 25, 27-1, 27-2, 27-3
Type of the Object for Front Side Radar Control Target	18-1, 18-2, 18-3, 18-4, 18-5, 18-6, 18-7, 18-8, 18-9, 18-10, 18-12, 18-14, 18-15, 25, 27-1, 27-2, 27-3
ECT for Front Side Radar Target	18-1, 18-2, 18-3, 18-4, 18-5, 18-6, 18-7, 18-8, 18-9, 18-10, 18-12, 18-14, 18-15, 25, 27-1, 27-2, 27-3
SCS Steering Angle	18-1, 18-2, 18-3, 18-4, 18-5, 18-6, 18-7, 18-8, 18-9, 18-10, 18-12, 18-14, 18-15, 25, 27-1, 27-2, 27-3
Pedestrian Protection System Record Trigger Signal	18-1, 18-2, 18-3, 18-4, 18-5, 18-6, 18-7, 18-8, 18-9, 18-10, 18-12, 18-14, 18-15, 25, 27-1, 27-2, 27-3, 32-1, 32-2, 32-3, 33
Pedestrian Protection System Maximum Pressure Ratio (LH)	18-1, 18-2, 18-3, 18-4, 18-5, 18-6, 18-7, 18-8, 18-9, 18-10, 18-12, 18-14, 18-15, 25, 27-1, 27-2, 27-3, 32-1, 32-2, 32-3, 33

TESTER DISPLAY	TRIGGER ID NO.
Pedestrian Protection System Maximum Pressure Ratio (RH)	18-1, 18-2, 18-3, 18-4, 18-5, 18-6, 18-7, 18-8, 18-9, 18-10, 18-12, 18-14, 18-15, 25, 27-1, 27-2, 27-3, 32-1, 32-2, 32-3, 33
Pedestrian Protection System Vehicle Speed for Calculation	18-1, 18-2, 18-3, 18-4, 18-5, 18-6, 18-7, 18-8, 18-9, 18-10, 18-12, 18-14, 18-15, 25, 27-1, 27-2, 27-3, 32-1, 32-2, 32-3, 33
Rear Pop-Up Hood ECU Judgment Status	18-1, 18-2, 18-3, 18-4, 18-5, 18-6, 18-7, 18-8, 18-9, 18-10, 18-12, 18-14, 18-15, 25, 27-1, 27-2, 27-3, 29-1, 29-2
Front Pop-Up Hood ECU Judgment Status	18-1, 18-2, 18-3, 18-4, 18-5, 18-6, 18-7, 18-8, 18-9, 18-10, 18-12, 18-14, 18-15, 25, 27-1, 27-2, 27-3
SDV Request Flag	18-1, 18-2, 18-3, 18-4, 18-5, 18-6, 18-7, 18-8, 18-9, 18-10, 18-12, 18-14, 18-15, 25, 27-1, 27-2, 27-3, 29-1, 29-2
Pedestrian Protection Airbag ECU Judgment Status	18-1, 18-2, 18-3, 18-4, 18-5, 18-6, 18-7, 18-8, 18-9, 18-10, 18-12, 18-14, 18-15, 25, 27-1, 27-2, 27-3
Collision Point	18-1, 18-2, 18-3, 18-4, 18-5, 18-6, 18-7, 18-8, 18-9, 18-10, 18-12, 18-14, 18-15, 25, 27-1, 27-2, 27-3, 29-1, 29-2
LDA Inhibition by Steering Override	19, 25, 27-1, 27-2, 27-3
Steering Wheel Hold Detection	19, 25, 27-1, 27-2, 27-3
LTA Inhibition by Steering Override	19, 25, 27-1, 27-2, 27-3
Steering Angle Velocity	19, 25, 27-1, 27-2, 27-3
LTA Following Cancel Preparative Stage	19, 25, 27-1, 27-2, 27-3
EPS Pinion Angle	19, 25, 27-1, 27-2, 27-3
LCA Trigger Signal	22, 25, 27-1, 27-2, 27-3
LCA Trigger Type of List (Brake Overriding)	22, 25, 27-1, 27-2, 27-3
LCA Trigger Type of List (Approach Warning)	22, 25, 27-1, 27-2, 27-3
LCA Trigger Type of List (Stare Overriding)	22, 25, 27-1, 27-2, 27-3
LCA Lane Change Distance of Adjacent Forward Vehicle	22, 25, 27-1, 27-2, 27-3
LCA Lane Change Relative Speed of Adjacent Forward Vehicle	22, 25, 27-1, 27-2, 27-3
LCA Lane Change Distance of Adjacent Backward Vehicle	22, 25, 27-1, 27-2, 27-3
LCA Lane Change Relative Speed of Adjacent Backward Vehicle	22, 25, 27-1, 27-2, 27-3
LCA Distance of Forward Vehicle	22, 25, 27-1, 27-2, 27-3
LCA Relative Speed of Forward Vehicle	22, 25, 27-1, 27-2, 27-3

TESTER DISPLAY	TRIGGER ID NO.
LCA Lane Change right or wrong Opinion on Infringement (Right)	22, 25, 27-1, 27-2, 27-3
LCA Lane Change right or wrong Opinion on Infringement (Left)	22, 25, 27-1, 27-2, 27-3
LCA Turn State	22, 25, 27-1, 27-2, 27-3
LCA Left Lane Marker Kind	22, 25, 27-1, 27-2, 27-3
LCA Right Lane Marker Kind	22, 25, 27-1, 27-2, 27-3
LCA Left Lane Marker Position	22, 25, 27-1, 27-2, 27-3
LCA Right Lane Marker Position	22, 25, 27-1, 27-2, 27-3
LCA Yaw Angle	22, 25, 27-1, 27-2, 27-3
LCA Curvature	22, 25, 27-1, 27-2, 27-3
SOS Button State	22, 25, 27-1, 27-2, 27-3
PKSB Data Reception Status	20-1, 20-2, 20-3, 20-4, 20-5, 20-6
PKSB Trigger Flag	20-1, 20-2, 20-3, 20-4, 20-5, 20-6
PKSB Operation Function	20-1, 20-2, 20-3, 20-4, 20-5, 20-6
PKSB System Status	20-1, 20-2, 20-3, 20-4, 20-5, 20-6
Sonar Status	20-1, 20-2, 20-3, 20-4, 20-5, 20-6
Radar Status	20-1, 20-2, 20-3, 20-4, 20-5, 20-6
Camera Status	20-1, 20-2, 20-3, 20-4, 20-5, 20-6
PKSB Controlled Object Distance	20-1, 20-2, 20-3, 20-4, 20-5, 20-6
PKSB Request Driving Force Control Flag	20-1, 20-2, 20-3, 20-4, 20-5, 20-6
PKSB Request Braking Control Flag	20-1, 20-2, 20-3, 20-4, 20-5, 20-6
PKSB Select Function (Controlled Object 1)	20-1, 20-2, 20-3, 20-4, 20-5, 20-6
PKSB Recognition Sensor (Controlled Object 1)	20-1, 20-2, 20-3, 20-4, 20-5, 20-6
PKSB Recognition Level (Controlled Object 1)	20-1, 20-2, 20-3, 20-4, 20-5, 20-6
PKSB Select Function (Controlled Object 2)	20-1, 20-2, 20-3, 20-4, 20-5, 20-6
PKSB Recognition Sensor (Controlled Object 2)	20-1, 20-2, 20-3, 20-4, 20-5, 20-6
PKSB Recognition Level (Controlled Object 2)	20-1, 20-2, 20-3, 20-4, 20-5, 20-6
PKSB Select Function (Controlled Object 3)	20-1, 20-2, 20-3, 20-4, 20-5, 20-6

TESTER DISPLAY	TRIGGER ID NO.
PKSB Recognition Sensor (Controlled Object 3)	20-1, 20-2, 20-3, 20-4, 20-5, 20-6
PKSB Recognition Level (Controlled Object 3)	20-1, 20-2, 20-3, 20-4, 20-5, 20-6
PKSB Select Function (Controlled Object 4)	20-1, 20-2, 20-3, 20-4, 20-5, 20-6
PKSB Recognition Level (Controlled Object 4)	20-1, 20-2, 20-3, 20-4, 20-5, 20-6
PKSB Select Function (Controlled Object 5)	20-1, 20-2, 20-3, 20-4, 20-5, 20-6
PKSB Recognition Level (Controlled Object 5)	20-1, 20-2, 20-3, 20-4, 20-5, 20-6
PKSB Select Function (Controlled Object 6)	20-1, 20-2, 20-3, 20-4, 20-5, 20-6
PKSB Recognition Level (Controlled Object 6)	20-1, 20-2, 20-3, 20-4, 20-5, 20-6
PKSB Controlled Object No.	20-1, 20-2, 20-3, 20-4, 20-5, 20-6
Vehicle Direction	20-1, 20-2, 20-3, 20-4, 20-5, 20-6
PKSB Controlled Object 1 Position (Anteroposterior Axis)	20-1, 20-2, 20-3, 20-4, 20-5, 20-6
PKSB Controlled Object 1 Position (Horizontal Axis)	20-1, 20-2, 20-3, 20-4, 20-5, 20-6
PKSB Controlled Object 2 Position (Anteroposterior Axis)	20-1, 20-2, 20-3, 20-4, 20-5, 20-6
PKSB Controlled Object 2 Position (Horizontal Axis)	20-1, 20-2, 20-3, 20-4, 20-5, 20-6
PKSB Controlled Object 3 Position (Anteroposterior Axis)	20-1, 20-2, 20-3, 20-4, 20-5, 20-6
PKSB Controlled Object 3 Position (Horizontal Axis)	20-1, 20-2, 20-3, 20-4, 20-5, 20-6
PKSB Controlled Object 4 Position (Anteroposterior Axis)	20-1, 20-2, 20-3, 20-4, 20-5, 20-6
PKSB Controlled Object 4 Position (Horizontal Axis)	20-1, 20-2, 20-3, 20-4, 20-5, 20-6
PKSB Controlled Object 5 Position (Anteroposterior Axis)	20-1, 20-2, 20-3, 20-4, 20-5, 20-6
PKSB Controlled Object 5 Position (Horizontal Axis)	20-1, 20-2, 20-3, 20-4, 20-5, 20-6
PKSB Controlled Object 6 Position (Anteroposterior Axis)	20-1, 20-2, 20-3, 20-4, 20-5, 20-6
PKSB Controlled Object 6 Position (Horizontal Axis)	20-1, 20-2, 20-3, 20-4, 20-5, 20-6

TESTER DISPLAY	TRIGGER ID NO.
Rear Support Functions Data Reception Status	23-1, 23-2 , 23-3, 23-4
FHL Request Flag	23-1, 23-2 , 23-3, 23-4
Rear Support Functions Status	23-1, 23-2 , 23-3, 23-4
Rear Object1 Object Distance Y	23-1, 23-2 , 23-3, 23-4
Rear Object1 Object Distance X	23-1, 23-2 , 23-3, 23-4
Rear Object1 Relative Speed Y	23-1, 23-2 , 23-3, 23-4
Rear Object1 Relative Speed X	23-1, 23-2 , 23-3, 23-4
Rear Object1_RCS Electric Wave Reflection Level	23-1, 23-2 , 23-3, 23-4
Rear Object1 Predicted Time to Collision	23-1, 23-2 , 23-3, 23-4
Rear Object1 (CAN Received Data)	23-1, 23-2 , 23-3, 23-4
Rear Object1 (Adjacent Reflection Flag)	23-1, 23-2 , 23-3, 23-4
Rear Object1 (Radar Distortional Flag)	23-1, 23-2 , 23-3, 23-4
Rear Object1 (Radar Blockage Ratio Flag)	23-1, 23-2 , 23-3, 23-4
Rear Object1 (Detective Prediction Flag)	23-1, 23-2 , 23-3, 23-4
Rear Object1 (Virtual Image Prediction Flag)	23-1, 23-2 , 23-3, 23-4
Rear Object1 (FHL Operating Trigger Flag)	23-1, 23-2 , 23-3, 23-4
Rear Object1 (Detecting Radar)	23-1, 23-2 , 23-3, 23-4
Rear Object1 (New Target Flag)	23-1, 23-2 , 23-3, 23-4
Rear Object1 ID	23-1, 23-2 , 23-3, 23-4
Rear Object2 Object Distance Y	23-1, 23-2 , 23-3, 23-4
Rear Object2 Object Distance X	23-1, 23-2 , 23-3, 23-4
Rear Object2 Relative Speed Y	23-1, 23-2 , 23-3, 23-4
Rear Object2 Relative Speed X	23-1, 23-2 , 23-3, 23-4
Rear Object2_RCS Electric Wave Reflection Level	23-1, 23-2 , 23-3, 23-4
Rear Object2 Predicted Time to Collision	23-1, 23-2 , 23-3, 23-4
Rear Object2 (CAN Received Data)	23-1, 23-2 , 23-3, 23-4

TESTER DISPLAY	TRIGGER ID NO.
Rear Object2 (Adjacent Reflection Flag)	23-1, 23-2 , 23-3, 23-4
Rear Object2 (Radar Distortional Flag)	23-1, 23-2 , 23-3, 23-4
Rear Object2 (Radar Blockage Ratio Flag)	23-1, 23-2 , 23-3, 23-4
Rear Object2 (Detective Prediction Flag)	23-1, 23-2 , 23-3, 23-4
FHL2 (Radar Distortional Flag)	23-1, 23-2 , 23-3, 23-4
Rear Object2 (Virtual Image Prediction Flag)	23-1, 23-2 , 23-3, 23-4
Rear Object2 (FHL Operating Trigger Flag)	23-1, 23-2 , 23-3, 23-4
Rear Object2 (Detecting Radar)	23-1, 23-2 , 23-3, 23-4
Rear Object2 (New Target Flag)	23-1, 23-2 , 23-3, 23-4
Rear Object2 ID	23-1, 23-2 , 23-3, 23-4
Rear Object3 Object Distance Y	23-1, 23-2 , 23-3, 23-4
Rear Object3 Object Distance X	23-1, 23-2 , 23-3, 23-4
Rear Object3 Relative Speed Y	23-1, 23-2 , 23-3, 23-4
Rear Object3 Relative Speed X	23-1, 23-2 , 23-3, 23-4
Rear Object3_RCS Electric Wave Reflection Level	23-1, 23-2 , 23-3, 23-4
Rear Object3 Predicted Time to Collision	23-1, 23-2 , 23-3, 23-4
Rear Object3 (CAN Received Data)	23-1, 23-2 , 23-3, 23-4
Rear Object3 (Adjacent Reflection Flag)	23-1, 23-2 , 23-3, 23-4
Rear Object3 (Radar Distortional Flag)	23-1, 23-2 , 23-3, 23-4
Rear Object3 (Radar Blockage Ratio Flag)	23-1, 23-2 , 23-3, 23-4
Rear Object3 (Detective Prediction Flag)	23-1, 23-2 , 23-3, 23-4
Rear Object3 (Virtual Image Prediction Flag)	23-1, 23-2 , 23-3, 23-4
Rear Object3 (FHL Operating Trigger Flag)	23-1, 23-2 , 23-3, 23-4
Rear Object3 (Detecting Radar)	23-1, 23-2 , 23-3, 23-4
Rear Object3 (New Target Flag)	23-1, 23-2 , 23-3, 23-4

TESTER DISPLAY	TRIGGER ID NO.
Rear Object3 ID	23-1, 23-2 , 23-3, 23-4
Emergency Driving Stop System Steering Wheel Release State	25, 26-1, 26-2, 26-3, 26-4, 26-5, 26-6, 27-1, 27-2, 27-3
Emergency Driving Stop System Help Net Connection State	25, 26-1, 26-2, 26-3, 26-4, 26-5, 26-6, 27-1, 27-2, 27-3
Emergency Driving Stop System Door Unlocking State	25, 26-1, 26-2, 26-3, 26-4, 26-5, 26-6, 27-1, 27-2, 27-3
Emergency Driving Stop System Brakes State	25, 26-1, 26-2, 26-3, 26-4, 26-5, 26-6, 27-1, 27-2, 27-3
Emergency Driving Stop System Phase 2 Shift Number of Times	25, 26-1, 26-2, 26-3, 26-4, 26-5, 26-6, 27-1, 27-2, 27-3
Emergency Driving Stop System Phase 3 Shift Flag	25, 26-1, 26-2, 26-3, 26-4, 26-5, 26-6, 27-1, 27-2, 27-3
Emergency Driving Stop System Phase 4 Shift Flag	25, 26-1, 26-2, 26-3, 26-4, 26-5, 26-6, 27-1, 27-2, 27-3
Emergency Driving Stop System User Cancellation	25, 26-1, 26-2, 26-3, 26-4, 26-5, 26-6, 27-1, 27-2, 27-3
Emergency Driving Stop System Automatic Cancellation	25, 26-1, 26-2, 26-3, 26-4, 26-5, 26-6, 27-1, 27-2, 27-3
Emergency Driving Stop System Accelerator Divergence	25, 26-1, 26-2, 26-3, 26-4, 26-5, 26-6, 27-1, 27-2, 27-3
Flag of SRS Airbag System Over Constant Sensor Signal Input (Longitudinal) Trigger	29-1, 29-2
Flag of SRS Airbag System Over Constant Sensor Signal Input (Lateral) Trigger	29-1, 29-2
Front Airbag ECU Judgment Status	29-1, 29-2, 32-1, 32-2, 32-3, 33
Seat Belt Pretensioner ECU Judgment Status	29-1, 29-2, 32-1, 32-2, 32-3, 33
Front Seat Airbag ECU Judgment Status	29-1, 29-2, 32-1, 32-2, 32-3, 33
Curtain Shield Airbag ECU Judgment Status	29-1, 29-2, 32-1, 32-2, 32-3, 33
Front Airbag Sensor LH Maximum Longitudinal G 1	29-1, 29-2
Front Airbag Sensor RH Maximum Longitudinal G 1	29-1, 29-2
Front Airbag Sensor LH Maximum Longitudinal G 2	29-1, 29-2
Front Airbag Sensor RH Maximum Longitudinal G 2	29-1, 29-2

TESTER DISPLAY	TRIGGER ID NO.
Airbag Sensor ASSY Maximum Integral of Longitudinal G	29-1, 29-2, 32-1, 32-2, 32-3, 33
Airbag Sensor ASSY Maximum Longitudinal G	29-1, 29-2, 32-1, 32-2, 32-3, 33
Airbag Sensor ASSY Minimum Longitudinal G	29-1, 29-2, 32-1, 32-2, 32-3, 33
Airbag Sensor ASSY Maximum Lateral G	29-1, 29-2, 32-1, 32-2, 32-3, 33
Airbag Sensor ASSY Minimum Lateral G	29-1, 29-2, 32-1, 32-2, 32-3, 33
Side Airbag Pressure Sensor LH Maximum Pressure Ratio	29-1, 29-2
Side Airbag Pressure Sensor RH Maximum Pressure Ratio	29-1, 29-2
Side Airbag Sensor LH NO.1 Maximum Lateral G 1	29-1, 29-2
Side Airbag Sensor RH NO.1 Maximum Lateral G 1	29-1, 29-2
Side Airbag Sensor LH NO.1 Maximum Lateral G 2	29-1, 29-2
Side Airbag Sensor RH NO.1 Maximum Lateral G 2	29-1, 29-2
Side Airbag Sensor LH NO.2 Maximum Lateral G	29-1, 29-2
Side Airbag Sensor RH NO.2 Maximum Lateral G	29-1, 29-2
Active-passive Integration Data Reception Status	32-1, 32-2, 32-3, 33
Target Relative Longitudinal Velocity	32-1, 32-2, 32-3, 33
Target Relative Lateral Velocity	32-1, 32-2, 32-3, 33
Target Relative Velocity (Active-passive Integration)	32-1, 32-2, 32-3, 33
Target Classification	32-1, 32-2, 32-3, 33
Target Predicted Time to Collision	32-1, 32-2, 32-3, 33
Advanced Driver Assistance System Generation Information	32-1, 32-2, 32-3, 33
PCS Function Information(Front Side PCS Enable)	32-1, 32-2, 32-3, 33
PCS Function Information (PCS to Two-wheeled Vehicle Enable)	32-1, 32-2, 32-3, 33

TESTER DISPLAY	TRIGGER ID NO.
PCS Function Information (PCS to Pedestrian Enable)	32-1, 32-2, 32-3, 33
PCS Function Information (PCS to Vehicle Enable)	32-1, 32-2, 32-3, 33
Advanced Driver Assistance System Status Information (Active-passive Integration Failure)	32-1, 32-2, 32-3, 33
Advanced Driver Assistance System Status Information (Active-passive Integration Invalid)	32-1, 32-2, 32-3, 33
PB Request Flag	32-1, 32-2, 32-3, 33
Vulnerable Road Users Detection Information	32-1, 32-2, 32-3, 33
Maximum Gx Amplitude for Left Front Sensor	32-1, 32-2, 32-3, 33
Maximum Gx Amplitude for Right Front Sensor	32-1, 32-2, 32-3, 33
Brake Judgment Status	31
Turn Signal Judgment Status	31
Vehicle Speed Judgment Status	31
Accelerator Slope Judgment Status	31
Acceleration Restriction Status	31
Slope Calculation Value	31
Judgment Value for Longitudinal Impact	24-1, 24-2
Judgment Value for Lateral Impact	24-1, 24-2
Post-Collision Acceleration Restriction Judgment Flag	24-1, 24-2
EPB Dynamic Deceleration Active	27-1, 27-2, 27-3
Plus Support Status (LDA Main SW)	19, 25
Plus Support Status (LDA Low Speed Assist)	19, 25
Plus Support Status (LDA Warning Timing)	19, 25
Plus Support Status (SWS Main SW)	19, 25

TESTER DISPLAY	TRIGGER ID NO.
Plus Support Status (LDA Warning Method)	19, 25
Sunglass Judgment Status	2, 3, 4, 15, 16, 17, 18-1, 18-2, 18-3, 18-4, 18-5, 18-6, 18-7, 18-8, 18-9, 18-10, 18-12, 18-14, 18-15, 19, 22, 25, 26-1, 26-2, 26-3, 26-4, 26-5, 26-6, 29-1, 29-2, 30, 31, 32-1, 32-2, 32-3, 33
Face Mask Judgment Status	2, 3, 4, 15, 16, 17, 18-1, 18-2, 18-3, 18-4, 18-5, 18-6, 18-7, 18-8, 18-9, 18-10, 18-12, 18-14, 18-15, 19, 22, 25, 26-1, 26-2, 26-3, 26-4, 26-5, 26-6, 29-1, 29-2, 30, 31, 32-1, 32-2, 32-3, 33
Glasses Judgment Status	2, 3, 4, 15, 16, 17, 18-1, 18-2, 18-3, 18-4, 18-5, 18-6, 18-7, 18-8, 18-9, 18-10, 18-12, 18-14, 18-15, 19, 22, 25, 26-1, 26-2, 26-3, 26-4, 26-5, 26-6, 29-1, 29-2, 30, 31, 32-1, 32-2, 32-3, 33
Backlight/Dirt Judgement	2, 3, 4, 15, 16, 17, 18-1, 18-2, 18-3, 18-4, 18-5, 18-6, 18-7, 18-8, 18-9, 18-10, 18-12, 18-14, 18-15, 19, 22, 25, 26-1, 26-2, 26-3, 26-4, 26-5, 26-6, 29-1, 29-2, 30, 31, 32-1, 32-2, 32-3, 33
Face Lost Judgment Status	2, 3, 4, 15, 16, 17, 18-1, 18-2, 18-3, 18-4, 18-5, 18-6, 18-7, 18-8, 18-9, 18-10, 18-12, 18-14, 18-15, 19, 22, 25, 26-1, 26-2, 26-3, 26-4, 26-5, 26-6, 29-1, 29-2, 30, 31, 32-1, 32-2, 32-3, 33
Distraction Judgment Status	2, 3, 4, 15, 16, 17, 18-1, 18-2, 18-3, 18-4, 18-5, 18-6, 18-7, 18-8, 18-9, 18-10, 18-12, 18-14, 18-15, 19, 22, 25, 26-1, 26-2, 26-3, 26-4, 26-5, 26-6, 29-1, 29-2, 30, 31, 32-1, 32-2, 32-3, 33
Closed Eyes Judgment Status	2, 3, 4, 15, 16, 17, 18-1, 18-2, 18-3, 18-4, 18-5, 18-6, 18-7, 18-8, 18-9, 18-10, 18-12, 18-14, 18-15, 19, 22, 25, 26-1, 26-2, 26-3, 26-4, 26-5, 26-6, 29-1, 29-2, 30, 31, 32-1, 32-2, 32-3, 33
Drowsiness Judgment Status	2, 3, 4, 15, 16, 17, 18-1, 18-2, 18-3, 18-4, 18-5, 18-6, 18-7, 18-8, 18-9, 18-10, 18-12, 18-14, 18-15, 19, 22, 25, 26-1, 26-2, 26-3, 26-4, 26-5, 26-6, 29-1, 29-2, 30, 31, 32-1, 32-2, 32-3, 33
Careless Driving Judgment Status	2, 3, 4, 15, 16, 17, 18-1, 18-2, 18-3, 18-4, 18-5, 18-6, 18-7, 18-8, 18-9, 18-10, 18-12, 18-14, 18-15, 19, 22, 25, 26-1, 26-2, 26-3, 26-4, 26-5, 26-6, 29-1, 29-2, 30, 31, 32-1, 32-2, 32-3, 33
Collapsed Posture Judgment Status	2, 3, 4, 15, 16, 17, 18-1, 18-2, 18-3, 18-4, 18-5, 18-6, 18-7, 18-8, 18-9, 18-10, 18-12, 18-14, 18-15, 19, 22, 25, 26-1, 26-2, 26-3, 26-4, 26-5, 26-6, 29-1, 29-2, 30, 31, 32-1, 32-2, 32-3, 33
Incapacitation Judgment Status	2, 3, 4, 15, 16, 17, 18-1, 18-2, 18-3, 18-4, 18-5, 18-6, 18-7, 18-8, 18-9, 18-10, 18-12, 18-14, 18-15, 19, 22, 25, 26-1, 26-2, 26-3, 26-4, 26-5, 26-6, 29-1, 29-2, 30, 31, 32-1, 32-2, 32-3, 33
Face Direction Judgment	2, 3, 4, 15, 16, 17, 18-1, 18-2, 18-3, 18-4, 18-5, 18-6, 18-7, 18-8, 18-9, 18-10, 18-12, 18-14, 18-15, 19, 22, 25, 26-1, 26-2, 26-3, 26-4, 26-5, 26-6, 29-1, 29-2, 30, 31, 32-1, 32-2, 32-3, 33
Driver Monitor Data Reception Status	2, 3, 4, 15, 16, 17, 18-1, 18-2, 18-3, 18-4, 18-5, 18-6, 18-7, 18-8, 18-9, 18-10, 18-12, 18-14, 18-15, 19, 22, 25, 26-1, 26-2, 26-3, 26-4, 26-5, 26-6, 29-1, 29-2, 30, 31, 32-1, 32-2, 32-3, 33
PCS/PKSB Operation Sensor Status	15, 16, 17, 18-1, 18-2, 18-3, 18-4, 18-5, 18-6, 18-7, 18-8, 18-9, 18-10, 18-12, 18-14, 18-15, 19, 25, 26-1, 26-2, 26-3, 26-4, 26-5, 26-6, 27-1, 27-2, 27-3
PCS/PKSB Operation Object Classification Information	15, 16, 17, 18-1, 18-2, 18-3, 18-4, 18-5, 18-6, 18-7, 18-8, 18-9, 18-10, 18-12, 18-14, 18-15, 19, 25, 26-1, 26-2, 26-3, 26-4, 26-5, 26-6, 27-1, 27-2, 27-3

TESTER DISPLAY	TRIGGER ID NO.
PCS/PKSB Operation Object Distance X	15, 16, 17, 18-1, 18-2, 18-3, 18-4, 18-5, 18-6, 18-7, 18-8, 18-9, 18-10, 18-12, 18-14, 18-15, 19, 25, 26-1, 26-2, 26-3, 26-4, 26-5, 26-6, 27-1, 27-2, 27-3
PCS/PKSB Operation Object Distance Y	15, 16, 17, 18-1, 18-2, 18-3, 18-4, 18-5, 18-6, 18-7, 18-8, 18-9, 18-10, 18-12, 18-14, 18-15, 19, 25, 26-1, 26-2, 26-3, 26-4, 26-5, 26-6, 27-1, 27-2, 27-3
Hands-ON Request Reason	15, 16, 17, 18-1, 18-2, 18-3, 18-4, 18-5, 18-6, 18-7, 18-8, 18-9, 18-10, 18-12, 18-14, 18-15, 19, 25, 26-1, 26-2, 26-3, 26-4, 26-5, 26-6, 27-1, 27-2, 27-3
Hands-OFF Control Status	15, 16, 17, 18-1, 18-2, 18-3, 18-4, 18-5, 18-6, 18-7, 18-8, 18-9, 18-10, 18-12, 18-14, 18-15, 19, 25, 26-1, 26-2, 26-3, 26-4, 26-5, 26-6, 27-1, 27-2, 27-3
Hands-OFF Setting Status	15, 16, 17, 18-1, 18-2, 18-3, 18-4, 18-5, 18-6, 18-7, 18-8, 18-9, 18-10, 18-12, 18-14, 18-15, 19, 25, 26-1, 26-2, 26-3, 26-4, 26-5, 26-6, 27-1, 27-2, 27-3
Hands-OFF Data Reception Status	15, 16, 17, 18-1, 18-2, 18-3, 18-4, 18-5, 18-6, 18-7, 18-8, 18-9, 18-10, 18-12, 18-14, 18-15, 19, 25, 26-1, 26-2, 26-3, 26-4, 26-5, 26-6, 27-1, 27-2, 27-3
ACC Resume Trigger Signal	17, 25, 27-1, 27-2, 27-3, 30
LDA Warning Inhibition by Driver Steering	19, 25, 27-1, 27-2, 27-3
LDA/LTA Controlled Object Type	19, 25, 27-1, 27-2, 27-3
Road Class Judgement (HOF)	22, 25, 27-1, 27-2, 27-3
Road Class Judgement (LCA)	22, 25, 27-1, 27-2, 27-3
Road Class Judgement (Navigation only)	22, 25, 27-1, 27-2, 27-3
Provisional Service Section (Camera only)	22, 25, 27-1, 27-2, 27-3
Median Strip (Camera only)	22, 25, 27-1, 27-2, 27-3
Road Class Judgement (Camera only)	22, 25, 27-1, 27-2, 27-3
Road Class Information Invalid Flag	22, 25, 27-1, 27-2, 27-3
Grip Sensor Value (Left)	22, 25, 27-1, 27-2, 27-3
Grip Sensor Value (Right)	22, 25, 27-1, 27-2, 27-3
Grip Sensor Value Invalid Flag	22, 25, 27-1, 27-2, 27-3
Distance of Right Guardrail and Own Vehicle	23-1, 23-2, 23-3, 23-4
Distance of Left Guardrail and Own Vehicle	23-1, 23-2, 23-3, 23-4
Rear Object1 Target Width	23-1, 23-2, 23-3, 23-4
Rear Object1 Target Direction Angle	23-1, 23-2, 23-3, 23-4
Rear Object2 Target Width	23-1, 23-2, 23-3, 23-4
Rear Object2 Target Direction Angle	23-1, 23-2, 23-3, 23-4

TESTER DISPLAY	TRIGGER ID NO.
Rear Object3 Target Width	23-1, 23-2, 23-3, 23-4
Rear Object3 Target Direction Angle	23-1, 23-2, 23-3, 23-4
Secondary Collision Brake (Rear Impacts while Stopped) Operation Request	23-1, 23-2, 23-3, 23-4
Rear Vehicle Approaching Indication Operation Request	23-1, 23-2, 23-3, 23-4
Approaching Vehicle Support Operation Request 1	23-1, 23-2, 23-3, 23-4
Approaching Vehicle Support Operation Request 2	23-1, 23-2, 23-3, 23-4
Rear Object1 Secondary Collision Brake (Rear Impacts while Stopped) Operation Status	23-1, 23-2, 23-3, 23-4
Rear Object1 Rear Vehicle Approaching Indication Operation Status	23-1, 23-2, 23-3, 23-4
Rear Object1 Approaching Vehicle Support Operation Status	23-1, 23-2, 23-3, 23-4
Rear Object2 Secondary Collision Brake (Rear Impacts while Stopped) Operation Status	23-1, 23-2, 23-3, 23-4
Rear Object2 Rear Vehicle Approaching Indication Operation Status	23-1, 23-2, 23-3, 23-4
Rear Object2 Approaching Vehicle Support Operation Status	23-1, 23-2, 23-3, 23-4
Rear Object3 Secondary Collision Brake (Rear Impacts while Stopped) Operation Status	23-1, 23-2, 23-3, 23-4
Rear Object3 Rear Vehicle Approaching Indication Operation Status	23-1, 23-2, 23-3, 23-4
Rear Object3 Approaching Vehicle Support Operation Status	23-1, 23-2, 23-3, 23-4

Record Data Item Chart

TESTER DISPLAY	MEASUREMENT ITEM	RANGE	DIAGNOSTIC NOTE
Vehicle Speed	Vehicle speed at main driven wheels	0 to 200 km/h	If the vehicle speed is 200 km/h or more, "200 km/h" is displayed.

TESTER DISPLAY	MEASUREMENT ITEM	RANGE	DIAGNOSTIC NOTE
Accelerator Opening Ratio	Accelerator pedal opening angle	0 to 100.0%	-
Engine RPM Data	Number of crankshaft revolutions in 1 minute	0 to 12800 rpm	-
Shift Position Signal	Shift lever position	N / D / R / P / 5 / 4 / 3 / 2 / LO / B / SD / S-Mode / Undetermined	-
Brake SW	Stop light switch condition	OFF: Stop lights not illuminated ON: Stop lights illuminated	-
Brake Oil Pressure	Brake fluid pressure inside master cylinder	0 to 12.144 MPa	-
Driver Operate Brake Torque	Target deceleration due to driver operation converted into torque on the drive shaft axis. (Does not include target deceleration by HAC, ACC or PB)	0 to 4064 Nm	-
Yaw Rate Sensor Signal	Angular velocity of the vehicle when turning	-61.000 to 61.000 deg/s	<ul style="list-style-type: none"> A positive value is displayed when turning left. If the value is 61 deg/s or more, "61.000 deg/s" is displayed. If the value is -61 deg/s or less, "-61.000 deg/s" is displayed.
Longitudinal G Sensor Signal	Longitudinal acceleration measured by acceleration sensor for VSC system	-8.97250 to 8.97250 m/s ²	<ul style="list-style-type: none"> A positive value is displayed when acceleration is increasing. If the value is 8.9725 m/s² or more, "8.97250 m/s²" is displayed. If the value is -8.9725 m/s² or less, "-8.97250 m/s²" is displayed.
Lateral G Sensor Signal	Lateral acceleration measured by acceleration sensor for VSC system	-8.97250 to 8.97250 m/s ²	<ul style="list-style-type: none"> A positive value is displayed when turning left.

TESTER DISPLAY	MEASUREMENT ITEM	RANGE	DIAGNOSTIC NOTE
			<ul style="list-style-type: none"> If the value is 8.9725 m/s² or more, "8.97250 m/s²" is displayed. If the value is -8.9725 m/s² or less, "-8.97250 m/s²" is displayed.
Throttle Opening Ratio	Throttle valve opening amount	0 to 100.0%	"Invalid" is displayed for non-gasoline vehicles.
Command Value of Fuel Injection Amount	Commanded fuel injection volume	0 to 120.0 mm ³ /st	<ul style="list-style-type: none"> "Invalid" is displayed for non-diesel vehicles. If the value is 120 mm³/st or more, "120.0 mm³/st" is displayed.
Steering Signal	Steering angle	-567.0 to 567.0 deg	<ul style="list-style-type: none"> A positive value is displayed when the steering wheel is turned left. If the value is 567 deg or more, "567.0 deg" is displayed. If the value is -567 deg or less, "-567.0 deg" is displayed. As the steering wheel must be turned for the steering angle sensor to obtain an initial value, if the steering wheel is not operated after the ignition switch is turned to ON, an invalid value will be displayed.
Cruise Data Reception Status	Valid / invalid status of cruise related data	Valid / Invalid	-
PCS_ON/OFF_SW State	ON/OFF state of PCS according to switch operation	OFF / ON	When the "PCS Reception Data Invalid Flag" is "Invalid", this item is not displayed because it is invalid.
PCS FPB Request Flag	PCS brake (preliminary braking) command	OFF / ON	When the "PCS Reception Data Invalid Flag" is "Invalid", this

TESTER DISPLAY	MEASUREMENT ITEM	RANGE	DIAGNOSTIC NOTE
			item is not displayed because it is invalid.
Cruise Control	Cruise control condition	OFF: Cruise control not operating or not equipped ON: Cruise control operating	<ul style="list-style-type: none"> When the "Cruise Data Reception Status" is "Invalid", this item is not displayed because it is invalid. If the vehicle is not equipped with cruise control, "OFF" is displayed.
Under VSC Control	Operation of VSC	OFF: Not operating ON: Operating	-
Under ABS Control	Operation of ABS	OFF: Not operating ON: Operating	-
Under BOS Control	Operation of BOS (Brake Override System)	OFF: Not operating ON: Operating	-
Under TRC Operation Flag	Operation of TRC	OFF: Not operating ON: Operating	-
PCS Reception Data Invalid Flag	Validity of PCS related data	Valid / Invalid	When the "PCS Reception Data Invalid Flag" is "Invalid", this item is not displayed because it is invalid.
PCS ALM Request Flag(PRE ALM Request)	PCS warning operation command 1	OFF / ON	When the "PCS Reception Data Invalid Flag" is "Invalid", this item is not displayed because it is invalid.
PCS ALM Request Flag(Ordinary ALM Request)	PCS warning operation command 2	OFF / ON	When the "PCS Reception Data Invalid Flag" is "Invalid", this item is not displayed because it is invalid.
PCS PBA Request Flag	PCS brake assist command <ul style="list-style-type: none"> PBA1 ON: Small amount of brake assist PBA2 ON: Medium amount of brake assist PBA3 ON: Large amount of brake assist 	OFF / PBA1 ON / PBA2 ON / PBA3 ON	When the "PCS Reception Data Invalid Flag" is "Invalid", this item is not displayed because it is invalid.
PCS PB Request Flag	PCS brake (operation) command	OFF / ON	When the "PCS Reception Data Invalid Flag" is "Invalid", this

TESTER DISPLAY	MEASUREMENT ITEM	RANGE	DIAGNOSTIC NOTE
			item is not displayed because it is invalid.
PCS Display (Control Status 2)	PCS control status 2	Level1 / Level2 / Level3 / Level4	When the "PCS Reception Data Invalid Flag" is "Invalid", this item is not displayed because it is invalid.
PCS Display (Control Status 1)	PCS control status 1	Level1 / Level2 / Level3 / Level4	When the "PCS Reception Data Invalid Flag" is "Invalid", this item is not displayed because it is invalid.
PCS Display (Object Recognition Status)	Target recognition status	Status1 / Status2	When the "PCS Reception Data Invalid Flag" is "Invalid", this item is not displayed because it is invalid.
PCS Display (Milli-Meter Wave Radar Alignment Flag)	Millimeter wave radar sensor beam axis adjustment status	OFF / ON	When the "PCS Reception Data Invalid Flag" is "Invalid", this item is not displayed because it is invalid.
PCS Display (Camera Backlight Status)	Existence of camera backlight	Normal / Backlight	When the "PCS Reception Data Invalid Flag" is "Invalid", this item is not displayed because it is invalid.
PCS Display (Milli-Meter Wave Radar Low Voltage Status)	Millimeter wave radar sensor low voltage	Normal / Low	When the "PCS Reception Data Invalid Flag" is "Invalid", this item is not displayed because it is invalid.
PCS Display (Sensor Recognition Status)	Sensor recognition status	Status1 / Status2	When the "PCS Reception Data Invalid Flag" is "Invalid", this item is not displayed because it is invalid.
PCS Display (Temporarily not available)	PCS temporarily disabled	System Available / System Not Available	When the "PCS Reception Data Invalid Flag" is "Invalid", this item is not displayed because it is invalid.
PCS Display (Milli-Meter Wave Radar Dirt)	Existence of dirt, etc. on millimeter wave radar sensor	OFF / ON	When the "PCS Reception Data Invalid Flag" is "Invalid", this item is not displayed because it is invalid.
PCS Display (Diag Condition)	PCS system warning message status	OFF / ON	When the "PCS Reception Data Invalid Flag" is "Invalid", this item is not displayed because it is invalid.
LDA Data Reception Status	Validity of LDA related data	Valid / Invalid	-
LTA Data Reception Status	Validity of LTA related data	Valid / Invalid	-

TESTER DISPLAY	MEASUREMENT ITEM	RANGE	DIAGNOSTIC NOTE
LCA Data Reception Status	Validity of LCA related data	Valid / Invalid	-
Emergency Driving Stop System Data Reception Status	Validity of emergency driving stop system related data	Valid / Invalid	-
Lane Departure Prevention Control	Whether the LTA/LDA system is during lane departure suppression control.	Not control / Control	-
Lane Departure Monitoring	Whether the LTA/LDA system is monitoring lane departure.	Not monitoring / Monitoring	-
LDA Main Switch Status	LTA/LDA main switch status	OFF / ON	-
Center Trace Control	Whether the LTA/LDA system is during center trace control.	Not control / Control	When the "LTA Data Reception Status" is "Invalid", this item is not displayed because it is invalid.
LTA Main Switch Status	LTA/LDA main switch status	OFF / ON	-
Turn Signal State	Whether the turn signals are on.	Invalid / Left Turn Signal ON / Right Turn Signal ON / Turn Signal OFF	<ul style="list-style-type: none"> • Left Turn Signal ON → Left turn signal light is blinking. • Right Turn Signal ON → Right turn signal light is blinking. • Turn Signal OFF → Neither turn signal light is blinking.
EPS Torque Sensor Value	Amount of EPS assist	-12.8 to 12.7 Nm	A positive value is displayed when the steering wheel is turned left.
LCA Control State	The lane change support state.	State0 / State1 / State2 / State3 / State4 / State5 / State6 / Invalid	When the "LCA Data Reception Status" is "Invalid", this item is not displayed because it is invalid.
Emergency Driving Stop System Horn Status	Whether a horn buzzer request is sent.	Not Request / Request	When the "Emergency Driving Stop System Data Reception Status" is "Invalid", this item is not displayed because it is invalid.
Emergency Driving Stop System Hazard Request	Whether a hazard warning light blinking request is sent.	Not Request / Request	When the "Emergency Driving Stop System Data Reception Status" is "Invalid", this item is not displayed because it is invalid.

TESTER DISPLAY	MEASUREMENT ITEM	RANGE	DIAGNOSTIC NOTE
Emergency Driving Stop System Phase	Operation phase status of the emergency driving stop system function.	Initial State / LTA Steering Wheel Release Warning / Warning Phase 1 / Warning Phase 2 / Deceleration Stop Phase / Stop Hold Phase	<ul style="list-style-type: none"> • When the "Emergency Driving Stop System Data Reception Status" is "Invalid", this item is not displayed because it is invalid. • Initial State: Emergency driving stop system not operating • LTA Steering Wheel Release Warning: LTA is performing control and a hand-off warning is issued, but the emergency driving stop system is not operating • Warning Phase 1: When no operation continues after LTA Steering Wheel Release Warning • Warning Phase 2: When no operation continues after Warning Phase 1 (After gently decelerating, the hazard lights blink at or above a certain level of deceleration) • Deceleration Stop Phase: When no operation continues after Warning Phase 2 (deceleration control and proximity warning using horn and hazard lights) • Stop Hold Phase: When the vehicle stops after Deceleration Stop Phase (Proximity warning using horn and hazard lights, HELPNET connected and doors unlocked)

TESTER DISPLAY	MEASUREMENT ITEM	RANGE	DIAGNOSTIC NOTE
Powering IG Status 1	Power status of the system (ECM, etc.*) generating driving force.	OFF / ON	*: The applicable ECU may vary depending on the vehicle.
Powering IG Status 2	Power status of the system (transmission control ECU, hybrid vehicle control ECU, etc.*) generating driving force.	OFF / ON	*: The applicable ECU may vary depending on the vehicle.
Advanced Park Flag	Whether advanced park is operating.	OFF / ON	When the "PKSB Data Reception Status" is "Invalid", this item is not displayed because it is invalid.
Support Target Road	Support target level for the currently traveling road.	Not Support target area / Support target area Level2 / Support target area Level3 / Support target area Level4 / Support target area Level2", " No Data / Support target area Level3", " No Data / Support target area Level4", " No Data	-
RSC Data Reception Status	Whether the DSC-related data is valid when driving in reverse.	Data Valid / Data Invalid	-
RSC Level	Whether the reverse speed restriction setting is enabled.	Unknown / Restraint / No restraint	<ul style="list-style-type: none"> When the "RSC Data Reception Status" is "Data Invalid", this item is not displayed because it is invalid. When the Drive Start Control (DSC) function is not available, Unknown is displayed
RSC State	Operating status of reverse speed control.	Not Control / Under Control(Speed restraint control)	<ul style="list-style-type: none"> When the "RSC Data Reception Status" is "Data Invalid", this item is not displayed because it is invalid. When the Drive Start Control (DSC) function is not available, Unknown is displayed
Driver Classification	Driver category information.	Normal / Plus Support	-

TESTER DISPLAY	MEASUREMENT ITEM	RANGE	DIAGNOSTIC NOTE
EPB Switch	EPB (electric parking brake) switch status.	Indeterminate State / Switch is being operated to lock side / Switch is being operated to release side / Switch is not operated	Displays a fixed value for each vehicle model.
Pinion Angle	Pinion angle of the steering rack gear assembly (turning angle gear assembly).	-763.5 to 765 deg	A positive value is displayed when the steering wheel is turned left.
Rear Steering Angle	Steering angle of rear wheels.	-12.5 to 12.5 deg	A positive value is displayed when the steering wheel is turned left.
Shift Gear	Selected gear (or range) displayed on meter when shift lever in M (or S)	OFF: Not displayed on meter 1st to 10th: Gear/range displayed on meter	The gear displayed may differ from the actual selected gear.
Drive Mode Select Signal	Indicates the currently selected drive mode	NORMAL / POWER / SPORT(3MODE) / SPORT(4MODE) / SPORT+ / COMFORT / ECO / Drive Mode Select Customizing / PWR+ / RANGE / TRUCK / REAR COMFORT / PLUS1	When the "Valid/Invalid of Driving Mode" is "Invalid", this item is not displayed because it is invalid.
Valid/Invalid of EV Mode	Validity of EV mode information	Valid / Invalid	-
EV Mode	EV mode indicator status	OFF: EV MODE indicator not illuminated ON: EV MODE indicator illuminated	When the "Valid/Invalid of EV Mode" is "Invalid", this item is not displayed because it is invalid.
Valid/Invalid of TRC/VSC OFF Lamp	Validity of TRC OFF indicator and VSC OFF indicator information	Valid / Invalid	-
TRC OFF Lamp	TRC OFF indicator status	OFF: TRC OFF indicator not illuminated ON: TRC OFF indicator illuminated	When the "Valid/Invalid of TRC/VSC OFF Lamp" is "Invalid", this item is not displayed because it is invalid.
VSC OFF Lamp	VSC OFF indicator status	OFF: VSC OFF indicator not illuminated ON: VSC OFF indicator illuminated	When the "Valid/Invalid of TRC/VSC OFF Lamp" is "Invalid", this item is not displayed because it is invalid.
Valid/Invalid of Driving Mode	Validity of SNOW mode information	Valid / Invalid	-
SNOW Mode	SNOW mode indicator status	OFF: SNOW mode indicator not illuminated ON: SNOW mode indicator illuminated	When the "Valid/Invalid of Driving Mode" is "Invalid", this item is not displayed because it is invalid.
Driving Mode	Current driving mode	Sports / Eco / Normal / Range / Rear Comfort /	-

TESTER DISPLAY	MEASUREMENT ITEM	RANGE	DIAGNOSTIC NOTE
		Customized OFF	
Engine Load Factor	Engine load	0 to 100.0%	"Invalid" is displayed for hybrid vehicles and diesel vehicles.
READY Signal	Driving possible	ON: Driving possible message displayed OFF: Driving possible message not displayed	"Invalid" is displayed for gasoline vehicles and diesel vehicles.
Gear Position Signal	Current gear	1st / 2nd / 3rd / 4th / 5th / 6th / 7th / 8th / 9th / 10th / 11th / 12th / 13th / 14th / 15th / 16th or Invalid	<ul style="list-style-type: none"> "Invalid" is displayed for hybrid vehicles. "1" is always displayed for vehicles with a CVT.
Under VDIM Control	Operation of VDIM	OFF: Not operating ON: Operating	-
Under SCB Control	Operation of SCB	Not SCB Control / Under SCB Control	-
Under the Shift Change DSC Operation	Operation of DSC (Drive Start Control)	Not Control: DSC is not operating Under Control (Drive): DSC control is performed when shift lever is moved from P to R, D to R, or N to R Under Control (Reverse): DSC control is performed when shift lever is moved from P to D or R to D	-
Turbine RPM/Input Shaft RPM	Torque converter output shaft speed (transmission input shaft speed)	0 to 12700 rpm	-
FR Wheel Speed	Front right wheel speed	-327.68 to 327.65 km/h	If the value is 327.65 km/h or more, "327.65 km" is displayed.
FL Wheel Speed	Front left wheel speed	-327.68 to 327.65 km/h	If the value is 327.65 km/h or more, "327.65 km" is displayed.
RR Wheel Speed	Rear right wheel speed	-327.68 to 327.65 km/h	If the value is 327.65 km/h or more, "327.65 km" is displayed.
RL Wheel Speed	Rear left wheel speed	-327.68 to 327.65 km/h	If the value is 327.65 km/h or more, "327.65 km" is displayed.
Trigger Judgement Status	Cruise control trigger judgment method	Pattern1 / Pattern2	-
Driving Force Demand Judgment Flag	Driving force demand	Non-Driving Force / Driving Force	A fixed value is displayed for each vehicle.
Cruise System	Malfunction of cruise control system	Normal / Fault	When the "Cruise Data Reception Status" is "Invalid",

TESTER DISPLAY	MEASUREMENT ITEM	RANGE	DIAGNOSTIC NOTE
			this item is not displayed because it is invalid.
Cruise System (ACC)	Whether there is a malfunction in the radar cruise control system.	Normal / Fault	When the "Cruise Data Reception Status" is "Invalid", this item is not displayed because it is invalid.
Cruise Control Res/Accel SW	Cruise control RES/+ (ACCEL) switch status	OFF / ON	When the "Cruise Data Reception Status" is "Invalid", this item is not displayed because it is invalid.
Cruise Control Set/Coast SW	Cruise control SET/- (COAST) switch status	OFF / ON	When the "Cruise Data Reception Status" is "Invalid", this item is not displayed because it is invalid.
Cruise Control Cancel SW	Cruise control CANCEL switch status	OFF / ON	When the "Cruise Data Reception Status" is "Invalid", this item is not displayed because it is invalid.
Cruise Control Brake SW	Stop light switch status while cruise control operating	OFF / ON	When the "Cruise Data Reception Status" is "Invalid", this item is not displayed because it is invalid.
Cruise Control D Signal	Shift lever in D while cruise control operating	OFF / ON	When the "Cruise Data Reception Status" is "Invalid", this item is not displayed because it is invalid.
Cruise Control Main SW	Cruise control main switch status	OFF / ON	When the "Cruise Data Reception Status" is "Invalid", this item is not displayed because it is invalid.
Cruise Control Set Speed	Set vehicle speed for cruise control	0 to 255 km/h	When the "Cruise Data Reception Status" is "Invalid", this item is not displayed because it is invalid.
Vehicle Speed (during Cruise Control)	Vehicle speed while cruise control operating	0 to 255 km/h	When the "Cruise Data Reception Status" is "Invalid", this item is not displayed because it is invalid.
Cruise Control Request Value	Cruise control system requested throttle valve opening angle (when value of "Driving Force Demand Judgment Flag" is "Non-Driving Force") or driving force (when value of "Driving Force Demand Judgment Flag" is "Driving Force")	Throttle Valve Opening Angle: 0 to 127.5% Driving Force: -12800 to 12700 N	<ul style="list-style-type: none"> The displayed values for this item and "Driving Force Demand Judgment Flag" will differ. When the "Cruise Data Reception Status" is "Invalid", this item is not

TESTER DISPLAY	MEASUREMENT ITEM	RANGE	DIAGNOSTIC NOTE
			displayed because it is invalid.
ACC Data Reception Status	Normal / fault status of ACC related data	Valid / Invalid	-
ACC Trigger Signal	ACC gentle deceleration detection status.	OFF / ON	When the "ACC Data Reception Status" is "Invalid", this item is not displayed because it is invalid.
ACC Deceleration Fluctuation	Deceleration fluctuation range when ACC gentle deceleration is detected.	0 to 6.2 m/s ²	When the "ACC Data Reception Status" is "Invalid", this item is not displayed because it is invalid.
ACC Selection Duration	Control elapsed time when ACC gentle deceleration is detected.	0 to 12.6 sec	When the "ACC Data Reception Status" is "Invalid", this item is not displayed because it is invalid.
ACC Radar Axis Yaw	ACC radar yaw angle learning value.	-6.4 to 6.3 deg	When the "ACC Data Reception Status" is "Invalid", this item is not displayed because it is invalid.
ACC Camera Axis Yaw	ACC camera yaw angle learning value.	-6.4 to 6.3 deg	When the "ACC Data Reception Status" is "Invalid", this item is not displayed because it is invalid.
ACC Set Vehicle Following Mode	ACC vehicle-to-vehicle distance control mode.	Undefined / Vehicle following time long / Vehicle following time middle / Vehicle following time short	When the "ACC Data Reception Status" is "Invalid", this item is not displayed because it is invalid.
ACC Curve R	ACC estimated curve radius	-25600 to 25550 m	When the "ACC Data Reception Status" is "Invalid", this item is not displayed because it is invalid.
ACC Target Number	ACC control target number (serial number).	0 to 3	When the "ACC Data Reception Status" is "Invalid", this item is not displayed because it is invalid.
ACC Target Radar Status	ACC control target radar recognition status.	No radar recognition / Under radar recognition / Radar recognition history exists	When the "ACC Data Reception Status" is "Invalid", this item is not displayed because it is invalid.
ACC Target Camera Status	ACC control target camera recognition status.	No camera recognition / Under camera recognition / Camera recognition history exists	When the "ACC Data Reception Status" is "Invalid", this item is not displayed because it is invalid.
ACC Target Distance	ACC control target distance.	0 to 511 m	When the "ACC Data Reception Status" is "Invalid", this item is

TESTER DISPLAY	MEASUREMENT ITEM	RANGE	DIAGNOSTIC NOTE
			not displayed because it is invalid.
ACC Target Condition	ACC control target condition.	Forward Vehicle / No Forward Vehicle / Constant Speed Mode / Radar Failure	When the "ACC Data Reception Status" is "Invalid", this item is not displayed because it is invalid.
ACC Target Relative Velocity	ACC control target relative speed.	-76.8 to 76.5 m/s	When the "ACC Data Reception Status" is "Invalid", this item is not displayed because it is invalid.
ACC Target Lateral Position	ACC control target side position.	-51.2 to 51.0 m	When the "ACC Data Reception Status" is "Invalid", this item is not displayed because it is invalid.
ACC Target Lateral Relative Velocity	ACC control target side relative speed.	-12.8 to 12.6 m/s	When the "ACC Data Reception Status" is "Invalid", this item is not displayed because it is invalid.
ACC Approach Warning	ACC control proximity warning status.	OFF / ON	When the "ACC Data Reception Status" is "Invalid", this item is not displayed because it is invalid.
ACC Acceleration Request	ACC control target acceleration.	-6.4 to 6.2 m/s ²	When the "ACC Data Reception Status" is "Invalid", this item is not displayed because it is invalid.
Emergency Steering Assist Request Flag	Emergency steering assist request.	OFF / ON	When the "PCS Reception Data Invalid Flag" is "Invalid", this item is not displayed because it is invalid.
Active Assist for Seat Belt Request Flag	Active assist for seat belt operation command	OFF / ON	When the "PCS Reception Data Invalid Flag" is "Invalid", this item is not displayed because it is invalid.
PCS Brake Operation Preparation Request Flag	PCS brake (standby) command	OFF / ON	When the "PCS Reception Data Invalid Flag" is "Invalid", this item is not displayed because it is invalid.
Stop Lamp Lighting Request Flag	Stop light illumination command	OFF / ON	When the "PCS Reception Data Invalid Flag" is "Invalid", this item is not displayed because it is invalid.
PCS Brake Hold Request Flag	PCS after operation brake hold command	OFF / ON	When the "PCS Reception Data Invalid Flag" is "Invalid", this item is not displayed because it is invalid.

TESTER DISPLAY	MEASUREMENT ITEM	RANGE	DIAGNOSTIC NOTE
Collision Avoidance Assist 3	Status of avoidance support request flag 3.	OFF / ON	When the "PCS Reception Data Invalid Flag" is "Invalid", this item is not displayed because it is invalid.
Collision Avoidance Assist 2	Status of avoidance support request flag 2.	OFF / ON	When the "PCS Reception Data Invalid Flag" is "Invalid", this item is not displayed because it is invalid.
Collision Avoidance Assist 1	Status of avoidance support request flag 1.	OFF / ON	When the "PCS Reception Data Invalid Flag" is "Invalid", this item is not displayed because it is invalid.
Target Distance	Distance to PCS control target object	0 to 100.33 m	When the "PCS Reception Data Invalid Flag" is "Invalid", this item is not displayed because it is invalid.
Target Relative Velocity	Relative speed of PCS control target object	-57.540 to 14.000 m/s	<ul style="list-style-type: none"> • A negative value will be displayed when approaching the target object. • When the "PCS Reception Data Invalid Flag" is "Invalid", this item is not displayed because it is invalid.
Target Lateral Position	Horizontal position of PCS control target object	-5.12 to 4.80 m	<ul style="list-style-type: none"> • A positive value is displayed when the detected object is to the right of the vehicle centerline. • A negative value is displayed when the detected object is to the left of the vehicle centerline. • When the "PCS Reception Data Invalid Flag" is "Invalid", this item is not displayed because it is invalid.
Target Object Number	Target object type number of objects judged to be PCS control target objects	1 to 32	When the "PCS Reception Data Invalid Flag" is "Invalid", this item is not displayed because it is invalid.

TESTER DISPLAY	MEASUREMENT ITEM	RANGE	DIAGNOSTIC NOTE
Relative Acceleration for Control Target	Relative acceleration of PCS control target object	-8 to 7 m/s ²	When the "PCS Reception Data Invalid Flag" is "Invalid", this item is not displayed because it is invalid.
Predicted Time to Collision 1 for Control Target	Estimated time until collision with PCS control target object 1	0 to 6.3 sec	When the "PCS Reception Data Invalid Flag" is "Invalid", this item is not displayed because it is invalid.
Predicted Time to Collision 2 for Control Target	Estimated time until collision with PCS control target object 2	0 to 6.3 sec	When the "PCS Reception Data Invalid Flag" is "Invalid", this item is not displayed because it is invalid.
Predicted Time to Collision Status for Control Target	Predicted Time to Collision Status for Control Target	Status1 / Status2	When the "PCS Reception Data Invalid Flag" is "Invalid", this item is not displayed because it is invalid.
Sensor Recognition Status for Control Target	Sensor recognition status	Status1 to Status10	When the "PCS Reception Data Invalid Flag" is "Invalid", this item is not displayed because it is invalid.
Type of the Object for Control Target	PCS control target object type	Type1 to Type16	When the "PCS Reception Data Invalid Flag" is "Invalid", this item is not displayed because it is invalid.
PCS ALM Mode Status	PCS warning sensitivity setting	OFF / Far / Middle / Near	When the "PCS Reception Data Invalid Flag" is "Invalid", this item is not displayed because it is invalid.
PCS Guard Status C	PCS guard status C	Status1 / Status2	When the "PCS Reception Data Invalid Flag" is "Invalid", this item is not displayed because it is invalid.
PCS Guard Status B	PCS guard status B	Status1 / Status2	When the "PCS Reception Data Invalid Flag" is "Invalid", this item is not displayed because it is invalid.
PCS Guard Status A	PCS guard status A	Status1 to Status4	When the "PCS Reception Data Invalid Flag" is "Invalid", this item is not displayed because it is invalid.
Estimated Curve Radius	Estimated route curve radius	-6400 to 6200 m	When the "PCS Reception Data Invalid Flag" is "Invalid", this item is not displayed because it is invalid.
Target Lateral Speed	PCS control target lateral speed.	-12.8 to 12.6 m/s	<ul style="list-style-type: none"> When the "PCS Reception Data Invalid Flag" is

TESTER DISPLAY	MEASUREMENT ITEM	RANGE	DIAGNOSTIC NOTE
			<p>"Invalid", this item is not displayed because it is invalid.</p> <ul style="list-style-type: none"> • If the target is moving to the right side of the vehicle, a positive value is displayed. • If the target is moving to the left side of the vehicle, a negative value is displayed.
PCS Brake Assist Level	Pre-collision brake assist control status	OFF / Level1 / Level2 / Level3 / Level4	-
PCS Cancel Status	PCS cancel condition status	Normal / PCS Cancel Status	-
Driver Operation Status	Driver operation status	Status1 / Status2	When the "PCS Reception Data Invalid Flag" is "Invalid", this item is not displayed because it is invalid.
Over Constant Longitudinal G Sensor Signal Value Detection	Displays whether the front and rear acceleration sensor signal value is at the specified value	<p>OFF: The front and rear acceleration sensor signal value is at specified value or lower</p> <p>ON: The front and rear acceleration sensor signal value is at specified value or higher</p>	-
Over Constant Lateral G Sensor Signal Value Detection	Displays whether the right and left acceleration sensor signal value is at specified value	<p>OFF: The right and left acceleration sensor signal value is at specified value or lower</p> <p>ON: The right and left acceleration sensor signal value is at specified value or higher</p>	-
Over Constant RR or RA Value Detection	Displays whether the roll rate and roll angle is at the specified value	<p>OFF: The roll rate and roll angle is at specified value or lower</p> <p>ON: The roll rate and roll angle is at specified value or higher</p>	-
Sensor Detection Status 1	Detection status of the sensor.	Status0 / Status1	-
Sensor Detection Status 2	Detection status of the sensor.	State0 / State1 / State2 / State3 / State4 / State5 / State6 / State7	-

TESTER DISPLAY	MEASUREMENT ITEM	RANGE	DIAGNOSTIC NOTE
Stereo Camera Reception Data Invalid Flag	Availability of pre-collision system (stereo camera type).	Valid / Invalid	-
PST Request Flag	Condition when it is judged that steering control intervention is possible in addition to brake control by the PCS system.	Status1 / Status2 / Status3 / Status4	When the "Stereo Camera Reception Data Invalid Flag" is "Invalid", this item is not displayed because it is invalid.
SCS Steering Angle (Enhancing)	Pinion angle extension information requested for steering angle by PCS control.	0 to 0.24 rad	When the "Stereo Camera Reception Data Invalid Flag" is "Invalid", this item is not displayed because it is invalid.
PCS Target TTS	PCS selection target TTS	0 to 2.4633 s	When the "Stereo Camera Reception Data Invalid Flag" is "Invalid", this item is not displayed because it is invalid.
PCS Target TTB	POS selection target TTB	0 to 2.4633 s	When the "Stereo Camera Reception Data Invalid Flag" is "Invalid", this item is not displayed because it is invalid.
PCS Target Candidate Status 1	Whether PCS target object conditions are met.	OFF / ON	When the "Stereo Camera Reception Data Invalid Flag" is "Invalid", this item is not displayed because it is invalid.
PB Control Enable Flag	PB operation permission status.	OFF / ON	When the "Stereo Camera Reception Data Invalid Flag" is "Invalid", this item is not displayed because it is invalid.
PB Control Prohibit Flag	PB operation prohibition status.	OFF / ON	When the "Stereo Camera Reception Data Invalid Flag" is "Invalid", this item is not displayed because it is invalid.
PB Control Start Flag	PB operation start status.	OFF / ON	When the "Stereo Camera Reception Data Invalid Flag" is "Invalid", this item is not displayed because it is invalid.
PB Control Cancel Flag	PB operation cancellation status.	OFF / ON	When the "Stereo Camera Reception Data Invalid Flag" is "Invalid", this item is not displayed because it is invalid.
PCS Target Candidate Status 4	Whether PCS target object conditions are met.	OFF / ON	When the "Stereo Camera Reception Data Invalid Flag" is "Invalid", this item is not displayed because it is invalid.
PCS Target Candidate Status 3	Whether PCS target object conditions are met.	OFF / ON	When the "Stereo Camera Reception Data Invalid Flag" is

TESTER DISPLAY	MEASUREMENT ITEM	RANGE	DIAGNOSTIC NOTE
			"Invalid", this item is not displayed because it is invalid.
PCS Target Candidate Status 2	Whether PCS target object conditions are met.	OFF / ON	When the "Stereo Camera Reception Data Invalid Flag" is "Invalid", this item is not displayed because it is invalid.
Kind of PCS System	The type of PCS control being performed.	Status1 / Status2 / Status3 / Status4 / Status5 / Status6 / Status7 / Status8	When the "Stereo Camera Reception Data Invalid Flag" is "Invalid", this item is not displayed because it is invalid.
Outside Lane Status	Whether the vehicle is traveling within its lane.	Status1 / Status2	When the "Stereo Camera Reception Data Invalid Flag" is "Invalid", this item is not displayed because it is invalid.
PST ETTC	Target collision prediction time judged by the steering assist PCS function	0 to 12.7 sec	When the "Stereo Camera Reception Data Invalid Flag" is "Invalid", this item is not displayed because it is invalid.
Camera Load Face Detection	Whether objects on the road surface are recognized by the stereo camera.	Status1 / Status2	When the "Stereo Camera Reception Data Invalid Flag" is "Invalid", this item is not displayed because it is invalid.
PST Obstacle Status	The angle judged by the steering assist PCS function.	-32 to 31 deg	When the "Stereo Camera Reception Data Invalid Flag" is "Invalid", this item is not displayed because it is invalid.
Time to Lane Crossing	The time until collision with the white lines to the left and right of the currently traveled lane while driving.	0 to 25.5 sec	When the "Stereo Camera Reception Data Invalid Flag" is "Invalid", this item is not displayed because it is invalid.
Front Side Radar Target Object Number	The target number detected by the front side radar.	0 to 31	When the "Stereo Camera Reception Data Invalid Flag" is "Invalid", this item is not displayed because it is invalid.
Front Side Radar Internal Status	Front side radar status.	Non-operation / Electric Wave Stop / The Operation / Fault / Temporarily Not Available 1 / Temporarily Not Available 2	When the "Stereo Camera Reception Data Invalid Flag" is "Invalid", this item is not displayed because it is invalid.
Front Side Radar Predicted Time to Collision for Control Target	Time until collision with target detected by front radar control.	0 to 6.3 sec	When the "Stereo Camera Reception Data Invalid Flag" is "Invalid", this item is not displayed because it is invalid.
Caution SW	The warning function on/off status. When the warning function OFF switch is pressed, it	OFF / ON	When the "Stereo Camera Reception Data Invalid Flag" is "Invalid", this item is not displayed because it is invalid.

TESTER DISPLAY	MEASUREMENT ITEM	RANGE	DIAGNOSTIC NOTE
	turns off.		
Front Side Radar Target Relative Velocity X	The relative longitudinal speed with regard to the target of front control.	-51.2 to 50.4 m/s	When the "Stereo Camera Reception Data Invalid Flag" is "Invalid", this item is not displayed because it is invalid.
Front Side Radar Target Relative Velocity Y	The relative lateral speed with regard to the target of front control.	-51.2 to 50.4 m/s	When the "Stereo Camera Reception Data Invalid Flag" is "Invalid", this item is not displayed because it is invalid.
Front Side Radar Target Distance X	The relative distance with regard to the target of front control.	-80.0 to 124.0 m	When the "Stereo Camera Reception Data Invalid Flag" is "Invalid", this item is not displayed because it is invalid.
Front Side Radar Target Distance Y	The relative distance with regard to the target of front control.	-80.0 to 124.0 m	When the "Stereo Camera Reception Data Invalid Flag" is "Invalid", this item is not displayed because it is invalid.
Type of the Object for Front Side Radar Control Target	Front side control target type	Type1 / Type2 / Type3 / Type4	When the "Stereo Camera Reception Data Invalid Flag" is "Invalid", this item is not displayed because it is invalid.
ECT for Front Side Radar Target	Front side control target ECT	0 to 6.3 sec	When the "Stereo Camera Reception Data Invalid Flag" is "Invalid", this item is not displayed because it is invalid.
SCS Steering Angle	Pinion angle requested by PCS control.	-32.768 to 32.512 rad	When the "Stereo Camera Reception Data Invalid Flag" is "Invalid", this item is not displayed because it is invalid.
Pedestrian Protection System Record Trigger Signal	Displays the pressure sensor output condition	Trigger is not established / Judgment Error of trigger / Trigger is established	When the "Stereo Camera Reception Data Invalid Flag" is "Invalid", this item is not displayed because it is invalid.
Pedestrian Protection System Maximum Pressure Ratio (LH)	Displays the maximum pressure change rate for the left side pressure sensor	-5.00 to 26.75 %	When the "Stereo Camera Reception Data Invalid Flag" is "Invalid", this item is not displayed because it is invalid.
Pedestrian Protection System Maximum Pressure Ratio (RH)	Displays the maximum pressure change rate for the right side pressure sensor	-5.00 to 26.75 %	When the "Stereo Camera Reception Data Invalid Flag" is "Invalid", this item is not displayed because it is invalid.
Pedestrian Protection System Vehicle Speed for Calculation	Displays the front bumper speed (calculated value)	0 to 254 km/h	When the "Stereo Camera Reception Data Invalid Flag" is "Invalid", this item is not displayed because it is invalid.
Rear Pop-Up Hood ECU Judgment	Displays whether the rear pop up hood has been	Rear Pop-Up Hood deployment judgment is not	When the "Stereo Camera Reception Data Invalid Flag" is

TESTER DISPLAY	MEASUREMENT ITEM	RANGE	DIAGNOSTIC NOTE
Status	operated	established / Judgment Error of Pedestrian Detection System / Rear Pop-Up Hood deployment judgment is established	"Invalid", this item is not displayed because it is invalid.
Front Pop-Up Hood ECU Judgment Status	Displays whether the front pop up hood has been operated	Front Pop-Up Hood deployment judgment is not established / Judgment Error of Pedestrian Detection System / There is no setting of Front Pop-Up Hood / Front Pop-Up Hood deployment judgment is established	When the "Stereo Camera Reception Data Invalid Flag" is "Invalid", this item is not displayed because it is invalid.
SDV Request Flag	The result judged by the PCS function so that the airbag deploys at an appropriate time.	Status1 / Status2 / Status3 / Status4	When the "Stereo Camera Reception Data Invalid Flag" is "Invalid", this item is not displayed because it is invalid.
Pedestrian Protection Airbag ECU Judgment Status	Displays whether the pedestrian airbag has been operated	Pedestrian airbag deployment judgment is not established / Judgment Error of Pedestrian Detection System / There is no setting of Pedestrian airbag / Pedestrian airbag deployment judgment is established	-
Collision Point	The predicted position where target will collide with vehicle.	0 to 24	-
LDA Inhibition by Steering Override	Whether the driver operated the steering wheel during LDA control.	Not inhibited / Inhibited	When the "LDA Data Reception Status" is "Invalid", this item is not displayed because it is invalid.
Steering Wheel Hold Detection	Whether the driver's hands are on the steering wheel when LTC is in use.	Release detection / Hold detection (Steering Touch Sensor) / Hold detection (Torque Sensor) / Hold detection (Steering Touch Sensor and Torque Sensor)	When the "LTA Data Reception Status" is "Invalid", this item is not displayed because it is invalid.
LTA Inhibition by Steering Override	Whether the driver's hands are on the steering wheel when LTC is in use.	Not inhibited / Inhibited	When the "LTA Data Reception Status" is "Invalid", this item is not displayed because it is invalid.
Steering Angle Velocity	Steering angle velocity.	-2048 to 1800 deg	-
LTA Following Cancel Preparative Stage	The recognized preceding vehicle has withdrawn due to lane change, etc.	Not in preparative stage / In preparative stage	When the "LTA Data Reception Status" is "Invalid", this item is

TESTER DISPLAY	MEASUREMENT ITEM	RANGE	DIAGNOSTIC NOTE
	Turns on when the preceding vehicle approaches the white line, and turns off if the vehicle makes lane changes to another lane.		not displayed because it is invalid.
EPS Pinion Angle	Steering wheel turning angle used for LTA control.	-32.767 to 32.766 rad	When the "LTA Data Reception Status" is "Invalid", this item is not displayed because it is invalid.
LCA Trigger Signal	Detection of LCA trigger	OFF / ON	When the "LCA Data Reception Status" is "Invalid", this item is not displayed because it is invalid.
LCA Trigger Type of List (Brake Overriding)	System overridden due to sudden braking.	Without / With	When the "LCA Data Reception Status" is "Invalid", this item is not displayed because it is invalid.
LCA Trigger Type of List (Approach Warning)	Proximity warning indicates sudden approach of a nearby vehicle.	Without / With	When the "LCA Data Reception Status" is "Invalid", this item is not displayed because it is invalid.
LCA Trigger Type of List (Stare Overriding)	System overridden due to steering wheel being moved.	Without / With	When the "LCA Data Reception Status" is "Invalid", this item is not displayed because it is invalid.
LCA Lane Change Distance of Adjacent Forward Vehicle	The distance to the preceding vehicle in the lane change destination.	0 to 75 m	When the "LCA Data Reception Status" is "Invalid", this item is not displayed because it is invalid.
LCA Lane Change Relative Speed of Adjacent Forward Vehicle	The relative speed of the preceding vehicle in the lane change destination.	-16 to 14 m/s	When the "LCA Data Reception Status" is "Invalid", this item is not displayed because it is invalid.
LCA Lane Change Distance of Adjacent Backward Vehicle	The distance to the rear vehicle in lane change destination.	0 to 75 m	When the "LCA Data Reception Status" is "Invalid", this item is not displayed because it is invalid.
LCA Lane Change Relative Speed of Adjacent Backward Vehicle	The relative speed of the rear vehicle in the lane change destination.	-16 to 14 m/s	When the "LCA Data Reception Status" is "Invalid", this item is not displayed because it is invalid.
LCA Distance of Forward Vehicle	The distance from the preceding vehicle in the vehicle's lane in relation to the lane change control target.	0 to 75 m	When the "LCA Data Reception Status" is "Invalid", this item is not displayed because it is invalid.

TESTER DISPLAY	MEASUREMENT ITEM	RANGE	DIAGNOSTIC NOTE
LCA Relative Speed of Forward Vehicle	The relative speed of the preceding vehicle in the vehicle's lane in relation to the target of lane change control.	-16 to 14 m/s	When the "LCA Data Reception Status" is "Invalid", this item is not displayed because it is invalid.
LCA Lane Change right or wrong Opinion on Infringement (Right)	The judgment result of a permission request to change lanes to the right.	Initial Value / NG	When the "LCA Data Reception Status" is "Invalid", this item is not displayed because it is invalid.
LCA Lane Change right or wrong Opinion on Infringement (Left)	The judgment result of a permission request to change lanes to the left.	Initial Value / NG	When the "LCA Data Reception Status" is "Invalid", this item is not displayed because it is invalid.
LCA Turn State	Whether the turn signals are on.	Invalid / Left Turn Signal ON / Right Turn Signal ON / Non-operation	<ul style="list-style-type: none"> When the "LCA Data Reception Status" is "Invalid", this item is not displayed because it is invalid. Left Turn Signal ON → Left turn signal light is blinking. Right Turn Signal ON → Right turn signal light is blinking. Non-operation → Neither turn signal light is blinking.
LCA Left Lane Marker Kind	The type of lane markers to the left of the vehicle (solid, dotted or Botts' Dots).	Solid / Broken / Bott' Dots / Invalid	When the "LCA Data Reception Status" is "Invalid", this item is not displayed because it is invalid.
LCA Right Lane Marker Kind	The type of lane markers to the right of the vehicle (solid, dotted or Botts' Dots).	Solid / Broken / Bott' Dots / Invalid	When the "LCA Data Reception Status" is "Invalid", this item is not displayed because it is invalid.
LCA Left Lane Marker Position	The distance between the lane marker to the left of the vehicle and this vehicle. The recorded value "0" indicates that the vehicle center is on the left lane marker.	-4.9 to 1.4 m	<ul style="list-style-type: none"> When the "LCA Data Reception Status" is "Invalid", this item is not displayed because it is invalid. The recorded value "0" indicates that the vehicle center is on the left lane marker.
LCA Right Lane Marker Position	The distance between the lane marker to the right of the vehicle and this vehicle.	-1.5 to 4.8 m	<ul style="list-style-type: none"> When the "LCA Data Reception Status" is "Invalid", this item is

TESTER DISPLAY	MEASUREMENT ITEM	RANGE	DIAGNOSTIC NOTE
	The recorded value "0" indicates that the vehicle center is on the right lane marker.		<p>not displayed because it is invalid.</p> <ul style="list-style-type: none"> The recorded value "0" indicates that the vehicle center is on the left lane marker.
LCA Yaw Angle	The LCA yaw angle.	-0.2784 to 0.2697 rad	When the "LCA Data Reception Status" is "Invalid", this item is not displayed because it is invalid.
LCA Curvature	The LCA lane curvature.	-0.0100000 to 0.0096875 1/m	When the "LCA Data Reception Status" is "Invalid", this item is not displayed because it is invalid.
SOS Button State	Whether the SOS switch has been pressed.	OFF / ON	-
PKSB Data Reception Status	Valid / invalid status of PKSB related data	Valid / Invalid	-
PKSB Trigger Flag	Existence of PKSB trigger conditions (Trigger ID 20-1, 20-2, 20-3, 20-4, 20-5, 20-6)	PKSB trigger OFF / Uper guard / PT cut / Break Control / Car Stop / Resume / Temporarily not available	<ul style="list-style-type: none"> If PKSB has not operated, "PKSB trigger OFF" is displayed. When the "PKSB Data Reception Status" is "Invalid", this item is not displayed because it is invalid.
PKSB Operation Function	Displays the functions in operation	No Operation function / PKSB (stationary objects in the front and rear) / PKSB (stationary objects in the side) / PKSB (vehicles approaching in the rear) / PKSB (pedestrians in the rear) / PKSB (moving objects in the all directions)	When the "PKSB Data Reception Status" is "Invalid", this item is not displayed because it is invalid.
PKSB System Status	System status.	Normal / Temporarily not available	When the "PKSB Data Reception Status" is "Invalid", this item is not displayed because it is invalid.
Sonar Status	Clearance sonar status.	Normal / Temporarily not available	When the "PKSB Data Reception Status" is "Invalid", this item is not displayed because it is invalid.
Radar Status	BSM radar status.	Normal / Temporarily not available	When the "PKSB Data Reception Status" is "Invalid", this item is

TESTER DISPLAY	MEASUREMENT ITEM	RANGE	DIAGNOSTIC NOTE
			not displayed because it is invalid.
Camera Status	Parking assist monitor camera status.	Normal / Temporarily not available	When the "PKSB Data Reception Status" is "Invalid", this item is not displayed because it is invalid.
PKSB Controlled Object Distance	Distance to detected object	0 to 3.78 m	When the "PKSB Data Reception Status" is "Invalid", this item is not displayed because it is invalid.
PKSB Request Driving Force Control Flag	Driving force suppression control operation	OFF / ON	When the "PKSB Data Reception Status" is "Invalid", this item is not displayed because it is invalid.
PKSB Request Braking Control Flag	Braking control operation	OFF / ON	When the "PKSB Data Reception Status" is "Invalid", this item is not displayed because it is invalid.
PKSB Select Function (Controlled Object 1)	Selected function.	No Select function / PKSB (stationary objects in the front and rear) / PKSB (stationary objects in the side) / PKSB (pedestrians in the rear)	When the "PKSB Data Reception Status" is "Invalid", this item is not displayed because it is invalid.
PKSB Recognition Sensor (Controlled Object 1)	Position of sensor which detected object	No Sensor information / Sonar / Camera / Fusion	When the "PKSB Data Reception Status" is "Invalid", this item is not displayed because it is invalid.
PKSB Recognition Level (Controlled Object 1)	Length of time the object was detected (level)	Level 0 / Level 1 / Level 2 / Level 3	When the "PKSB Data Reception Status" is "Invalid", this item is not displayed because it is invalid.
PKSB Select Function (Controlled Object 2)	Selected function.	No Select function / PKSB (stationary objects in the front and rear) / PKSB (stationary objects in the side) / PKSB (pedestrians in the rear)	When the "PKSB Data Reception Status" is "Invalid", this item is not displayed because it is invalid.
PKSB Recognition Sensor (Controlled Object 2)	Position of sensor which detected object	No Sensor information / Sonar / Camera / Fusion	When the "PKSB Data Reception Status" is "Invalid", this item is not displayed because it is invalid.
PKSB Recognition Level (Controlled Object 2)	Length of time the object was detected (level)	Level 0 / Level 1 / Level 2 / Level 3	When the "PKSB Data Reception Status" is "Invalid", this item is not displayed because it is invalid.

TESTER DISPLAY	MEASUREMENT ITEM	RANGE	DIAGNOSTIC NOTE
PKSB Select Function (Controlled Object 3)	Selected function.	No Select function / PKSB (stationary objects in the front and rear) / PKSB (stationary objects in the side) / PKSB (pedestrians in the rear)	When the "PKSB Data Reception Status" is "Invalid", this item is not displayed because it is invalid.
PKSB Recognition Sensor (Controlled Object 3)	Position of sensor which detected object	No Sensor information / Sonar / Camera / Fusion	When the "PKSB Data Reception Status" is "Invalid", this item is not displayed because it is invalid.
PKSB Recognition Level (Controlled Object 3)	Length of time the object was detected (level)	Level 0 / Level 1 / Level 2 / Level 3	When the "PKSB Data Reception Status" is "Invalid", this item is not displayed because it is invalid.
PKSB Select Function (Controlled Object 4)	Selected function.	No Select function / PKSB (vehicles approaching in the rear) / PKSB (moving objects in the all directions)	When the "PKSB Data Reception Status" is "Invalid", this item is not displayed because it is invalid.
PKSB Recognition Level (Controlled Object 4)	Length of time the object was detected (level)	Level 0 / Level 1 / Level 2 / Level 3	When the "PKSB Data Reception Status" is "Invalid", this item is not displayed because it is invalid.
PKSB Select Function (Controlled Object 5)	Selected function.	No Select function / PKSB (vehicles approaching in the rear) / PKSB (moving objects in the all directions)	When the "PKSB Data Reception Status" is "Invalid", this item is not displayed because it is invalid.
PKSB Recognition Level (Controlled Object 5)	Length of time the object was detected (level)	Level 0 / Level 1 / Level 2 / Level 3	When the "PKSB Data Reception Status" is "Invalid", this item is not displayed because it is invalid.
PKSB Select Function (Controlled Object 6)	Selected function.	No Select function / PKSB (vehicles approaching in the rear) / PKSB (moving objects in the all directions)	When the "PKSB Data Reception Status" is "Invalid", this item is not displayed because it is invalid.
PKSB Recognition Level (Controlled Object 6)	Length of time the object was detected (level)	Level 0 / Level 1 / Level 2 / Level 3	When the "PKSB Data Reception Status" is "Invalid", this item is not displayed because it is invalid.
PKSB Controlled Object No.	Object information number for which function operated.	No Operation function information / Information 1 / Information 2 / Information 3 / Information 4 / Information 5 / Information 6	When the "PKSB Data Reception Status" is "Invalid", this item is not displayed because it is invalid.

TESTER DISPLAY	MEASUREMENT ITEM	RANGE	DIAGNOSTIC NOTE
Vehicle Direction	Vehicle traveling direction.	No Vehicle direction / Forward / Reverse	When the "PKSB Data Reception Status" is "Invalid", this item is not displayed because it is invalid.
PKSB Controlled Object 1 Position (Anteroposterior Axis)	Object position coordinates in the forward and backward directions of the vehicle.	-7.68 to 7.62 m	When the "PKSB Data Reception Status" is "Invalid", this item is not displayed because it is invalid.
PKSB Controlled Object 1 Position (Horizontal Axis)	Object position coordinates in the lateral directions of the vehicle.	-7.68 to 7.62 m	When the "PKSB Data Reception Status" is "Invalid", this item is not displayed because it is invalid.
PKSB Controlled Object 2 Position (Anteroposterior Axis)	Object position coordinates in the forward and backward directions of the vehicle.	-7.68 to 7.62 m	When the "PKSB Data Reception Status" is "Invalid", this item is not displayed because it is invalid.
PKSB Controlled Object 2 Position (Horizontal Axis)	Object position coordinates in the lateral directions of the vehicle.	-7.68 to 7.62 m	When the "PKSB Data Reception Status" is "Invalid", this item is not displayed because it is invalid.
PKSB Controlled Object 3 Position (Anteroposterior Axis)	Object position coordinates in the forward and backward directions of the vehicle.	-7.68 to 7.62 m	When the "PKSB Data Reception Status" is "Invalid", this item is not displayed because it is invalid.
PKSB Controlled Object 3 Position (Horizontal Axis)	Object position coordinates in the lateral directions of the vehicle.	-7.68 to 7.62 m	When the "PKSB Data Reception Status" is "Invalid", this item is not displayed because it is invalid.
PKSB Controlled Object 4 Position (Anteroposterior Axis)	Object position coordinates in the forward and backward directions of the vehicle.	-25.6 to 25.4 m	When the "PKSB Data Reception Status" is "Invalid", this item is not displayed because it is invalid.
PKSB Controlled Object 4 Position (Horizontal Axis)	Object position coordinates in the lateral directions of the vehicle.	-25.6 to 25.4 m	When the "PKSB Data Reception Status" is "Invalid", this item is not displayed because it is invalid.
PKSB Controlled Object 5 Position (Anteroposterior Axis)	Object position coordinates in the forward and backward directions of the vehicle.	-25.6 to 25.4 m	When the "PKSB Data Reception Status" is "Invalid", this item is not displayed because it is invalid.
PKSB Controlled Object 5 Position (Horizontal Axis)	Object position coordinates in the lateral directions of the vehicle.	-25.6 to 25.4 m	When the "PKSB Data Reception Status" is "Invalid", this item is not displayed because it is invalid.
PKSB Controlled Object 6 Position	Object position coordinates in the forward and	-25.6 to 25.4 m	When the "PKSB Data Reception Status" is "Invalid", this item is

TESTER DISPLAY	MEASUREMENT ITEM	RANGE	DIAGNOSTIC NOTE
(Anteroposterior Axis)	backward directions of the vehicle.		not displayed because it is invalid.
PKSB Controlled Object 6 Position (Horizontal Axis)	Object position coordinates in the lateral directions of the vehicle.	-25.6 to 25.4 m	When the "PKSB Data Reception Status" is "Invalid", this item is not displayed because it is invalid.
Rear Support Functions Data Reception Status	Whether rear monitoring support system function related data is invalid.	Valid / Invalid	-
FHL Request Flag	The request signal to blink the hazard warning lights.	FHL Operation Request Signal OFF / FHL Operation Request Signal ON	When the "Rear Support Functions Data Reception Status" is "Invalid", this item is not displayed because it is invalid.
Rear Support Functions Status	Notifies the system of malfunction or normal operation status of the BSM sensor.	Non-Operation / Meter Valve Check / FHL Operation MID Indication / Normal / Fault / Temporary Not Available / Invalid	When the "Rear Support Functions Data Reception Status" is "Invalid", this item is not displayed because it is invalid.
Rear Object1 Object Distance Y	Distance from rear vehicle proximity warning 1 target.	-102.4 to 102.2 m	When the "Rear Support Functions Data Reception Status" is "Invalid", this item is not displayed because it is invalid.
Rear Object1 Object Distance X	Distance from rear vehicle proximity warning 1 target.	-102.4 to 102.2 m	When the "Rear Support Functions Data Reception Status" is "Invalid", this item is not displayed because it is invalid.
Rear Object1 Relative Speed Y	Relative speed between rear vehicle proximity warning 1 target.	-25.6 to 25.4 m/s	When the "Rear Support Functions Data Reception Status" is "Invalid", this item is not displayed because it is invalid.
Rear Object1 Relative Speed X	Relative speed between rear vehicle proximity warning 1 target.	-25.6 to 25.4 m/s	When the "Rear Support Functions Data Reception Status" is "Invalid", this item is not displayed because it is invalid.
Rear Object1_RCS Electric Wave Reflection Level	Reflection intensity from target. Vehicles are large resulting in the intensity of bicycles, etc., becoming smaller. A higher level means stronger intensity.	0 to 7	When the "Rear Support Functions Data Reception Status" is "Invalid", this item is not displayed because it is invalid.
Rear Object1 Predicted Time to Collision	Time until collision with target controlled by rear	0 to 3.1 sec	When the "Rear Support Functions Data Reception Status" is "Invalid", this item is

TESTER DISPLAY	MEASUREMENT ITEM	RANGE	DIAGNOSTIC NOTE
	vehicle proximity warning 1.		not displayed because it is invalid.
Rear Object1 (CAN Received Data)	Whether CAN received data is valid or invalid. Invalid when CAN data cannot be received, etc.	Valid / Invalid	When the "Rear Support Functions Data Reception Status" is "Invalid", this item is not displayed because it is invalid.
Rear Object1 (Adjacent Reflection Flag)	Whether reflective objects are located adjacent to vehicle.	OFF / ON	When the "Rear Support Functions Data Reception Status" is "Invalid", this item is not displayed because it is invalid.
Rear Object1 (Radar Distortional Flag)	Whether extrapolation has occurred.	OFF / ON	When the "Rear Support Functions Data Reception Status" is "Invalid", this item is not displayed because it is invalid.
Rear Object1 (Radar Blockage Ratio Flag)	ON/OFF status of radar blockage.	OFF / ON	When the "Rear Support Functions Data Reception Status" is "Invalid", this item is not displayed because it is invalid.
Rear Object1 (Detective Prediction Flag)	Whether the target is stably detected.	OFF / ON	When the "Rear Support Functions Data Reception Status" is "Invalid", this item is not displayed because it is invalid.
Rear Object1 (Virtual Image Prediction Flag)	Whether extrapolation was used.	OFF / ON	When the "Rear Support Functions Data Reception Status" is "Invalid", this item is not displayed because it is invalid.
Rear Object1 (FHL Operating Trigger Flag)	Whether the system is operating.	OFF / ON	When the "Rear Support Functions Data Reception Status" is "Invalid", this item is not displayed because it is invalid.
Rear Object1 (Detecting Radar)	Indicates which side (left or right) radar is detecting.	OFF / ON	When the "Rear Support Functions Data Reception Status" is "Invalid", this item is not displayed because it is invalid.
Rear Object1 (New Target Flag)	Whether a new visible object is present.	OFF / ON	When the "Rear Support Functions Data Reception Status" is "Invalid", this item is not displayed because it is invalid.

TESTER DISPLAY	MEASUREMENT ITEM	RANGE	DIAGNOSTIC NOTE
Rear Object1 ID	ID1, 2 and 3 are assigned in descending order of priority for the rear vehicle proximity warning operation targets.	0 to 3	When the "Rear Support Functions Data Reception Status" is "Invalid", this item is not displayed because it is invalid.
Rear Object2 Object Distance Y	Distance from rear vehicle proximity warning 2 target.	-102.4 to 102.2 m	When the "Rear Support Functions Data Reception Status" is "Invalid", this item is not displayed because it is invalid.
Rear Object2 Object Distance X	Distance from rear vehicle proximity warning 2 target.	-102.4 to 102.2 m	When the "Rear Support Functions Data Reception Status" is "Invalid", this item is not displayed because it is invalid.
Rear Object2 Relative Speed Y	Relative speed between rear vehicle proximity warning 2 target.	-25.6 to 25.4 m/s	When the "Rear Support Functions Data Reception Status" is "Invalid", this item is not displayed because it is invalid.
Rear Object2 Relative Speed X	Relative speed between rear vehicle proximity warning 2 target.	-25.6 to 25.4 m/s	When the "Rear Support Functions Data Reception Status" is "Invalid", this item is not displayed because it is invalid.
Rear Object2_RCS Electric Wave Reflection Level	Reflection intensity from target. Vehicles are large resulting in the intensity of bicycles, etc., becoming smaller. A higher level means stronger intensity.	0 to 7	When the "Rear Support Functions Data Reception Status" is "Invalid", this item is not displayed because it is invalid.
Rear Object2 Predicted Time to Collision	Time until collision with target controlled by rear vehicle proximity warning 2.	0 to 3.1 sec	When the "Rear Support Functions Data Reception Status" is "Invalid", this item is not displayed because it is invalid.
Rear Object2 (CAN Received Data)	Whether CAN received data is valid or invalid. Invalid when CAN data cannot be received, etc.	Valid / Invalid	When the "Rear Support Functions Data Reception Status" is "Invalid", this item is not displayed because it is invalid.
Rear Object2 (Adjacent Reflection Flag)	Whether reflective objects are located adjacent to vehicle.	OFF / ON	When the "Rear Support Functions Data Reception Status" is "Invalid", this item is not displayed because it is invalid.
Rear Object2 (Radar Distortional Flag)	Whether extrapolation has occurred.	OFF / ON	When the "Rear Support Functions Data Reception

TESTER DISPLAY	MEASUREMENT ITEM	RANGE	DIAGNOSTIC NOTE
			Status" is "Invalid", this item is not displayed because it is invalid.
Rear Object2 (Radar Blockage Ratio Flag)	ON/OFF status of radar blockage.	OFF / ON	When the "Rear Support Functions Data Reception Status" is "Invalid", this item is not displayed because it is invalid.
Rear Object2 (Detective Prediction Flag)	Whether the target is stably detected.	OFF / ON	When the "Rear Support Functions Data Reception Status" is "Invalid", this item is not displayed because it is invalid.
Rear Object2 (Virtual Image Prediction Flag)	Whether extrapolation was used.	OFF / ON	When the "Rear Support Functions Data Reception Status" is "Invalid", this item is not displayed because it is invalid.
Rear Object2 (FHL Operating Trigger Flag)	Whether the system is operating.	OFF / ON	When the "Rear Support Functions Data Reception Status" is "Invalid", this item is not displayed because it is invalid.
Rear Object2 (Detecting Radar)	Indicates which side (left or right) radar is detecting.	Right / Left	When the "Rear Support Functions Data Reception Status" is "Invalid", this item is not displayed because it is invalid.
Rear Object2 (New Target Flag)	Whether a new visible object is present.	OFF / ON	When the "Rear Support Functions Data Reception Status" is "Invalid", this item is not displayed because it is invalid.
Rear Object2 ID	ID1, 2 and 3 are assigned in descending order of priority for the rear vehicle proximity warning operation targets.	0 to 3	When the "Rear Support Functions Data Reception Status" is "Invalid", this item is not displayed because it is invalid.
Rear Object3 Object Distance Y	Distance from rear vehicle proximity warning 3 target.	-102.4 to 102.2 m	When the "Rear Support Functions Data Reception Status" is "Invalid", this item is not displayed because it is invalid.
Rear Object3 Object Distance X	Distance from rear vehicle proximity warning 3 target.	-102.4 to 102.2 m	When the "Rear Support Functions Data Reception Status" is "Invalid", this item is not displayed because it is invalid.

TESTER DISPLAY	MEASUREMENT ITEM	RANGE	DIAGNOSTIC NOTE
Rear Object3 Relative Speed Y	Relative speed between rear vehicle proximity warning 3 target.	-25.6 to 25.4 m/s	When the "Rear Support Functions Data Reception Status" is "Invalid", this item is not displayed because it is invalid.
Rear Object3 Relative Speed X	Relative speed between rear vehicle proximity warning 3 target.	-25.6 to 25.4 m/s	When the "Rear Support Functions Data Reception Status" is "Invalid", this item is not displayed because it is invalid.
Rear Object3_RCS Electric Wave Reflection Level	Reflection intensity from target. Vehicles are large resulting in the intensity of bicycles, etc., becoming smaller. A higher level means stronger intensity.	0 to 7	When the "Rear Support Functions Data Reception Status" is "Invalid", this item is not displayed because it is invalid.
Rear Object3 Predicted Time to Collision	Time until collision with target controlled by rear vehicle proximity warning 3.	0 to 3.1 sec	When the "Rear Support Functions Data Reception Status" is "Invalid", this item is not displayed because it is invalid.
Rear Object3 (CAN Received Data)	Whether CAN received data is valid or invalid. Invalid when CAN data cannot be received, etc.	Valid / Invalid	When the "Rear Support Functions Data Reception Status" is "Invalid", this item is not displayed because it is invalid.
Rear Object3 (Adjacent Reflection Flag)	Whether reflective objects are located adjacent to vehicle.	OFF / ON	When the "Rear Support Functions Data Reception Status" is "Invalid", this item is not displayed because it is invalid.
Rear Object3 (Radar Distortional Flag)	Whether extrapolation has occurred.	OFF / ON	When the "Rear Support Functions Data Reception Status" is "Invalid", this item is not displayed because it is invalid. When the "Rear Support Functions Data Reception Status" is "Invalid", this item is not displayed because it is invalid.
Rear Object3 (Radar Blockage Ratio Flag)	ON/OFF status of radar blockage.	OFF / ON	When the "Rear Support Functions Data Reception Status" is "Invalid", this item is not displayed because it is invalid.
Rear Object3 (Detective Prediction)	Whether the target is stably detected.	OFF / ON	When the "Rear Support Functions Data Reception

TESTER DISPLAY	MEASUREMENT ITEM	RANGE	DIAGNOSTIC NOTE
Flag)			Status" is "Invalid", this item is not displayed because it is invalid.
Rear Object3 (Virtual Image Prediction Flag)	Whether extrapolation was used.	OFF / ON	When the "Rear Support Functions Data Reception Status" is "Invalid", this item is not displayed because it is invalid.
Rear Object3 (FHL Operating Trigger Flag)	Whether the system is operating.	OFF / ON	When the "Rear Support Functions Data Reception Status" is "Invalid", this item is not displayed because it is invalid.
Rear Object3 (Detecting Radar)	Indicates which side (left or right) radar is detecting.	Right / Left	When the "Rear Support Functions Data Reception Status" is "Invalid", this item is not displayed because it is invalid.
Rear Object3 (New Target Flag)	Whether a new visible object is present.	OFF / ON	When the "Rear Support Functions Data Reception Status" is "Invalid", this item is not displayed because it is invalid.
Rear Object3 ID	ID1, 2 and 3 are assigned in descending order of priority for the rear vehicle proximity warning operation targets.	0 to 3	When the "Rear Support Functions Data Reception Status" is "Invalid", this item is not displayed because it is invalid.
Emergency Driving Stop System Steering Wheel Release State	Whether hands are not on the steering wheel.	Not Steering Wheel Release / Steering Wheel Release	When the "Emergency Driving Stop System Data Reception Status" is "Invalid", this item is not displayed because it is invalid.
Emergency Driving Stop System Help Net Connection State	Whether the system is connected to Helpnet.	Disconnect / Connect	When the "Emergency Driving Stop System Data Reception Status" is "Invalid", this item is not displayed because it is invalid.
Emergency Driving Stop System Door Unlocking State	Whether a door unlock request is sent.	Not Request / Request	When the "Emergency Driving Stop System Data Reception Status" is "Invalid", this item is not displayed because it is invalid.
Emergency Driving Stop System Brakes State	The brake status of the emergency driving stop system.	Not Brakes Request / Under Brakes Control / Oil Pressure Maintenance Mode / Among EPBLOCK / Brakes Error	<ul style="list-style-type: none"> When the "Emergency Driving Stop System Data Reception Status" is "Invalid", this item is not

TESTER DISPLAY	MEASUREMENT ITEM	RANGE	DIAGNOSTIC NOTE
			<p>displayed because it is invalid.</p> <ul style="list-style-type: none"> • Not Brakes Request: No request to brakes • Under Brakes Control: Brakes operated for emergency driving stop system • Under Brakes Control and Adoption: Brakes operated for stop support • Oil Pressure Maintenance Mode: Stopped and held by hydraulic brakes • Among EPBLOCK: System transitions from oil pressure hold to EPB LOCK control. • Brakes Error: Brakes abnormal
Emergency Driving Stop System Phase 2 Shift Number of Times	The number of transitions to phase 2.	0 / 1 / 2-5 / 6-10 / 11-20 / 21-50 / 51-100 / Over 101	<ul style="list-style-type: none"> • When the "Emergency Driving Stop System Data Reception Status" is "Invalid", this item is not displayed because it is invalid. • Restriction in tester display range
Emergency Driving Stop System Phase 3 Shift Flag	Flag that is enabled for a certain time after transitioning to decelerating stop.	No Shift to Phase3 / Shift to Phase3	When the "Emergency Driving Stop System Data Reception Status" is "Invalid", this item is not displayed because it is invalid.
Emergency Driving Stop System Phase 4 Shift Flag	Flag that is enabled for a certain time after transitioning to the stopped on hold phase.	No Shift to Phase4 / Shift to Phase4	When the "Emergency Driving Stop System Data Reception Status" is "Invalid", this item is not displayed because it is invalid.
Emergency Driving Stop System User Cancellation	How (what user operation) the emergency driving stop system function was canceled	No cancellation / Cancellation by EPB SW / Cancellation by Hazard SW / Cancellation by Accelerator Input / Cancellation by Steering Wheel Release State Cancellation / Cancellation by Shift	When the "Emergency Driving Stop System Data Reception Status" is "Invalid", this item is not displayed because it is invalid.

TESTER DISPLAY	MEASUREMENT ITEM	RANGE	DIAGNOSTIC NOTE
		Operation / Cancellation by Brake Application	
Emergency Driving Stop System Automatic Cancellation	Indicates which control operation resulted in the emergency driving stop system control being automatically canceled.	No Cancellation / ACC Automatic Cancellation / LTA Automatic Cancellation / Automatic Cancellation by Brakes State / Automatic Cancellation by Out of Supporting Road Type	When the "Emergency Driving Stop System Data Reception Status" is "Invalid", this item is not displayed because it is invalid.
Emergency Driving Stop System Accelerator Divergence	Accelerator pedal position.	0 to 127%	When the "Emergency Driving Stop System Data Reception Status" is "Invalid", this item is not displayed because it is invalid.
Flag of SRS Airbag System Over Constant Sensor Signal Input (Longitudinal) Trigger	"Flag of SRS Airbag System Over Constant Sensor Signal Input (Longitudinal) Trigger" trigger has been set.	Trigger is not established / Trigger is established / Judgment Error of trigger	-
Flag of SRS Airbag System Over Constant Sensor Signal Input (Lateral) Trigger	"Flag of SRS Airbag System Over Constant Sensor Signal Input (Lateral) Trigger" trigger has been set.	Trigger is not established / Trigger is established / Judgment Error of trigger	-
Front Airbag ECU Judgment Status	Whether the frontal collision airbag has been operated.	Front Airbag deployment judgment is not established / Judgment Error of SRS Airbag System / Front Airbag deployment judgment is established	-
Seat Belt Pretensioner ECU Judgment Status	Whether the seat belt pretensioner has been operated.	Seat Belt Pretensioner deployment judgment is not established / Judgment Error of SRS Airbag System / Seat Belt Pretensioner deployment judgment is established	-
Front Seat Airbag ECU Judgment Status	Whether the front seat airbag has been operated.	Front Seat Airbag deployment judgment is not established / Judgment Error of SRS Airbag System / Front Seat Airbag deployment judgment is established	-
Curtain Shield Airbag ECU Judgment Status	Whether the curtain shield airbag has been operated.	Curtain Shield Airbag deployment judgment is not established / Judgment Error of SRS Airbag System /	-

TESTER DISPLAY	MEASUREMENT ITEM	RANGE	DIAGNOSTIC NOTE
		Curtain Shield Airbag deployment judgment is established	
Front Airbag Sensor LH Maximum Longitudinal G 1	Maximum value of forward and backward acceleration 1 for front airbag sensor LH.	-25.2 to 25.4 G	-
Front Airbag Sensor RH Maximum Longitudinal G 1	Maximum value of forward and backward acceleration 1 for front airbag sensor RH.	-25.2 to 25.4 G	-
Front Airbag Sensor LH Maximum Longitudinal G 2	Maximum value of forward and backward acceleration 2 for front airbag sensor LH.	-25.2 to 25.4 G	-
Front Airbag Sensor RH Maximum Longitudinal G 2	Maximum value of forward and backward acceleration 2 for front airbag sensor RH.	-25.2 to 25.4 G	-
Airbag Sensor ASSY Maximum Integral of Longitudinal G	Maximum value of forward and backward acceleration integral value for airbag sensor assembly.	-7.0 to 7.5 m/s	-
Airbag Sensor ASSY Maximum Longitudinal G	Maximum value of forward and backward acceleration for airbag sensor assembly.	-15.750 to 15.875 G	-
Airbag Sensor ASSY Minimum Longitudinal G	Minimum value of forward and backward acceleration for airbag sensor assembly.	-15.750 to 15.875 G	-
Airbag Sensor ASSY Maximum Lateral G	Maximum value of left and right acceleration for airbag sensor assembly.	-7.50 to 7.75 G	-
Airbag Sensor ASSY Minimum Lateral G	Minimum value of left and right acceleration for airbag sensor assembly.	-7.50 to 7.75 G	-
Side Airbag Pressure Sensor LH Maximum Pressure Ratio	Maximum value of pressure change rate for side airbag pressure sensor LH.	0 to 6.2 %	-
Side Airbag Pressure Sensor RH Maximum Pressure Ratio	Maximum value of pressure change rate for side airbag pressure sensor RH.	0 to 6.2 %	-
Side Airbag Sensor LH NO.1 Maximum Lateral G 1	Maximum value of left and right acceleration 1 for No. 1 side airbag sensor LH.	0 to 31.50 G	-
Side Airbag Sensor RH NO.1 Maximum	Maximum value of left and right acceleration 1 for No.	0 to 31.50 G	-

TESTER DISPLAY	MEASUREMENT ITEM	RANGE	DIAGNOSTIC NOTE
Lateral G 1	1 side airbag sensor RH.		
Side Airbag Sensor LH NO.1 Maximum Lateral G 2	Maximum value of left and right acceleration 2 for No. 1 side airbag sensor LH.	0 to 31.50 G	-
Side Airbag Sensor RH NO.1 Maximum Lateral G 2	Maximum value of left and right acceleration 2 for No. 1 side airbag sensor RH.	0 to 31.50 G	-
Side Airbag Sensor LH NO.2 Maximum Lateral G	Maximum value of left and right acceleration for No. 2 side airbag sensor LH.	0 to 31.50 G	-
Side Airbag Sensor RH NO.2 Maximum Lateral G	Maximum value of left and right acceleration for No. 2 side airbag sensor RH.	0 to 31.50 G	-
Active-passive Integration Data Reception Status	Whether collision prevention-linked data is invalid.	Valid / Invalid	-
Target Relative Longitudinal Velocity	Relative longitudinal speed in regards to control target.	-185.0 to 19.7 km/h	When the "Active-passive Integration Data Reception Status" is "Invalid", this item is not displayed because it is invalid.
Target Relative Lateral Velocity	Relative lateral speed in regards to control target.	-51.2 to 51.1 km/h	When the "Active-passive Integration Data Reception Status" is "Invalid", this item is not displayed because it is invalid.
Target Relative Velocity (Active-passive Integration)	Relative speed in regards to control target.	-185.0 to 19.7 km/h	When the "Active-passive Integration Data Reception Status" is "Invalid", this item is not displayed because it is invalid.
Target Classification	Control target type.	Vehicle / Pedestrian / Two-wheeled Vehicle / Unknown / Building Structure / Animal and Lying Person	When the "Active-passive Integration Data Reception Status" is "Invalid", this item is not displayed because it is invalid.
Target Predicted Time to Collision	Collision prediction time with control target.	0 to 4095 ms	When the "Active-passive Integration Data Reception Status" is "Invalid", this item is not displayed because it is invalid.
Advanced Driver Assistance System Generation Information	Generation information for forward recognition camera.	Initial Value / Third Generation	When the "Active-passive Integration Data Reception Status" is "Invalid", this item is not displayed because it is invalid.

TESTER DISPLAY	MEASUREMENT ITEM	RANGE	DIAGNOSTIC NOTE
PCS Function Information(Front Side PCS Enable)	Whether front side PCS is enabled.	Initial Value / Front Side PCS Enable	When the "Active-passive Integration Data Reception Status" is "Invalid", this item is not displayed because it is invalid.
PCS Function Information (PCS to Two-wheeled Vehicle Enable)	Whether PCS is enabled for motorcycles.	Initial Value / PCS to Two-wheeled Vehicle Enable	When the "Active-passive Integration Data Reception Status" is "Invalid", this item is not displayed because it is invalid.
PCS Function Information (PCS to Pedestrian Enable)	Whether PCS is enabled for pedestrians.	Initial Value / PCS to Pedestrian Enable	When the "Active-passive Integration Data Reception Status" is "Invalid", this item is not displayed because it is invalid.
PCS Function Information (PCS to Vehicle Enable)	Whether PCS is enabled for vehicles.	Initial Value / PCS to Vehicle Enable	When the "Active-passive Integration Data Reception Status" is "Invalid", this item is not displayed because it is invalid.
Advanced Driver Assistance System Status Information (Active-passive Integration Failure)	Whether the forward recognition camera status is "failure".	Initial Value / Active-passive Integration Failure	When the "Active-passive Integration Data Reception Status" is "Invalid", this item is not displayed because it is invalid.
Advanced Driver Assistance System Status Information (Active-passive Integration Invalid)	Whether the forward recognition camera status is "invalid".	Initial Value / Active-passive Integration Invalid	When the "Active-passive Integration Data Reception Status" is "Invalid", this item is not displayed because it is invalid.
PB Request Flag	The PCS determined that collision is unavoidable.	OFF / ON	When the "Active-passive Integration Data Reception Status" is "Invalid", this item is not displayed because it is invalid.
Vulnerable Road Users Detection Information	Collision detection status with pedestrian, etc.	Operation judgment is not activated / Judgment Error / Operation judgment is activated	-
Maximum Gx Amplitude for Left Front Sensor	Maximum value of left front sensor Gx amplitude.	-50.8 to 50.8 G	Records the acceleration in the direction from the front to the rear of the vehicle as positive and records the acceleration from the rear to the front of the vehicle as negative.
Maximum Gx Amplitude for Right Front Sensor	Maximum value of right front sensor Gx amplitude.	-50.8 to 50.8 G	Records the acceleration in the direction from the front to the rear of the vehicle as positive

TESTER DISPLAY	MEASUREMENT ITEM	RANGE	DIAGNOSTIC NOTE
			and records the acceleration from the rear to the front of the vehicle as negative.
Brake Judgment Status	Whether brake conditions under acceleration suppression during sudden acceleration are in a status permitting operation.	Permit / Inhibit	When the "PKSB Data Reception Status" is "Invalid", this item is not displayed because it is invalid.
Turn Signal Judgment Status	Whether turn signal conditions under acceleration suppression during sudden acceleration are in a status permitting operation.	Permit / Inhibit	When the "PKSB Data Reception Status" is "Invalid", this item is not displayed because it is invalid.
Vehicle Speed Judgment Status	Whether vehicle speed conditions under acceleration suppression during sudden acceleration are in a status permitting operation.	Permit / Inhibit	When the "PKSB Data Reception Status" is "Invalid", this item is not displayed because it is invalid.
Accelerator Slope Judgment Status	Whether slope conditions under acceleration suppression during sudden acceleration are in a status permitting operation.	Permit / Inhibit	When the "PKSB Data Reception Status" is "Invalid", this item is not displayed because it is invalid.
Acceleration Restriction Status	Control status of acceleration suppression during sudden acceleration.	Inoperative / Acceleration Restriction / Limited Acceleration	When the "PKSB Data Reception Status" is "Invalid", this item is not displayed because it is invalid.
Slope Calculation Value	Slope calculated value.	-12.5 to 12.6 deg	When the "PKSB Data Reception Status" is "Invalid", this item is not displayed because it is invalid.
Judgment Value for Longitudinal Impact	Records the calculated integral value for the longitudinal impact.	-125 to 126 m	When the "PKSB Data Reception Status" is "Invalid", this item is not displayed because it is invalid.
Judgment Value for Lateral Impact	Records the calculated integral value for the lateral impact.	-125 to 126 m	When the "PKSB Data Reception Status" is "Invalid", this item is not displayed because it is invalid.
Post-Collision Acceleration Restriction Judgment Flag	Post-collision acceleration restriction status.	OFF / ON	-
EPB Dynamic Deceleration Active	EPB (electric parking brake) control while driving.	Inactive / Active	-

TESTER DISPLAY	MEASUREMENT ITEM	RANGE	DIAGNOSTIC NOTE
Plus Support Status (LDA Main SW)	Plus support control status.	Not Under Plus Support / Under Plus Support	When the "LDA Data Reception Status" is "Invalid", this item is not displayed because it is invalid.
Plus Support Status (LDA Low Speed Assist)	Plus support control status.	Not Under Plus Support / Under Plus Support	When the "LDA Data Reception Status" is "Invalid", this item is not displayed because it is invalid.
Plus Support Status (LDA Warning Timing)	Plus support control status.	Not Under Plus Support / Under Plus Support	When the "LDA Data Reception Status" is "Invalid", this item is not displayed because it is invalid.
Plus Support Status (SWS Main SW)	Plus support control status.	Not Under Plus Support / Under Plus Support	When the "LDA Data Reception Status" is "Invalid", this item is not displayed because it is invalid.
Plus Support Status (LDA Warning Method)	Plus support control status.	Not Under Plus Support / Under Plus Support	When the "LDA Data Reception Status" is "Invalid", this item is not displayed because it is invalid.
Sunglass Judgment Status	Sunglasses detection status using the driver monitor camera.	Not Detected / Detected	When the "Driver Monitor Data Reception Status" is "Invalid", this item is not displayed because it is invalid.
Face Mask Judgment Status	Mask detection status using the driver monitor camera.	Not Detected / Detected	When the "Driver Monitor Data Reception Status" is "Invalid", this item is not displayed because it is invalid.
Glasses Judgment Status	Eyeglasses detection status using the driver monitor camera.	Not Detected / Detected	When the "Driver Monitor Data Reception Status" is "Invalid", this item is not displayed because it is invalid.
Backlight/Dirt Judgement	Driver detection status using the driver monitor camera.	No Dirt and No Backlight / Dirt or Backlight	When the "Driver Monitor Data Reception Status" is "Invalid", this item is not displayed because it is invalid.
Face Lost Judgment Status	Face lost status using the driver monitor camera.	Not Detected / Detected	When the "Driver Monitor Data Reception Status" is "Invalid", this item is not displayed because it is invalid.
Distraction Judgment Status	Inattentive driving detection status using the driver monitor camera.	Not Detected / Detected	When the "Driver Monitor Data Reception Status" is "Invalid", this item is not displayed because it is invalid.
Closed Eyes Judgment Status	Eyes closed detection status using the driver monitor camera.	Not Detected / Detected	When the "Driver Monitor Data Reception Status" is "Invalid",

TESTER DISPLAY	MEASUREMENT ITEM	RANGE	DIAGNOSTIC NOTE
			this item is not displayed because it is invalid.
Drowsiness Judgment Status	Reduced consciousness detection status using the driver monitor camera.	Level0 / Level1 / Level2 / Level3 / Level4 / Level5	When the "Driver Monitor Data Reception Status" is "Invalid", this item is not displayed because it is invalid.
Careless Driving Judgment Status	Distracted driving detection status using the driver monitor camera.	Not Detected / Detected	When the "Driver Monitor Data Reception Status" is "Invalid", this item is not displayed because it is invalid.
Collapsed Posture Judgment Status	Collapsed posture detection status using the driver monitor camera.	Not Detected / Detected	When the "Driver Monitor Data Reception Status" is "Invalid", this item is not displayed because it is invalid.
Incapacitation Judgment Status	Driver abnormality detected using the driver monitor camera.	Not Detected / Detected	When the "Driver Monitor Data Reception Status" is "Invalid", this item is not displayed because it is invalid.
Face Direction Judgment	Driver facing forward status using the driver monitor camera.	Not Detected / Not Forward 1 / Not Forward 2 / Face Direction Forward 1 / Face Direction Forward 2 / Eyes Forward 1 / Eyes Forward 2	When the "Driver Monitor Data Reception Status" is "Invalid", this item is not displayed because it is invalid.
Driver Monitor Data Reception Status	Whether driver monitor data is invalid.	Valid / Invalid	-
PCS/PKSB Operation Sensor Status	PCS/PKSB operation-linked control sensor status.	FSN Condition Invalid / FSN Condition Normal FSN / FSN Condition MMW Only / FSN Condition Camera Lost MMW Only / FSN Condition Camera Only / FSN Condition MMW Lost Camera Only / FSN Condition MMW Only with Camera Detect History / FSN Condition MMW Only without Camera Detect History	-
PCS/PKSB Operation Object Classification Information	PCS/PKSB operation-linked control target type.	Invalid / Vehicle / Pedestrian / Bike Cyclist / Unknown Type / Structure / Lying people / Animal	-
PCS/PKSB Operation Object Distance X	Distance with PCS/PKSB operation-linked control target.	0 to 6.35 m	-
PCS/PKSB Operation Object Distance Y	Distance with PCS/PKSB operation-linked control target.	-3.2 to 31.5 m	-

TESTER DISPLAY	MEASUREMENT ITEM	RANGE	DIAGNOSTIC NOTE
Hands-ON Request Reason	Hands-on request reason.	Normal / Out of Supported Area / Assist condition is not satisfied / Over Speed / Attention to Surroundings / Others / Operating Gas Pedal / Door is opened / Seatbelt is not fastened / Bad Weather / Driving Position / Pre Notification / Undetect Face / System Malfunction / Control limitation / Attention Check	When the "Hands-OFF Data Reception Status" is "Invalid", this item is not displayed because it is invalid.
Hands-OFF Control Status	Hands-off control status.	OFF / NORMAL / INIT / READY / TD / FADEOUT / Emergency Driving Stop System Request / ERRLOCK	When the "Hands-OFF Data Reception Status" is "Invalid", this item is not displayed because it is invalid.
Hands-OFF Setting Status	Hands-off setting status.	OFF / ON	When the "Hands-OFF Data Reception Status" is "Invalid", this item is not displayed because it is invalid.
Hands-OFF Data Reception Status	Whether hands-off data is invalid.	Valid / Invalid	-
ACC Resume Trigger Signal	Cancel operation was performed immediately after ACC restart.	OFF / ON	When the "ACC Data Reception Status" is "Invalid", this item is not displayed because it is invalid.
LDA Warning Inhibition by Driver Steering	Whether restraint and cancellation conditions are met for lane departure warning function related to driving operation.	Not Inhibited / Inhibited	When the "ACC Data Reception Status" is "Invalid", this item is not displayed because it is invalid.
LDA/LTA Controlled Object Type	Lane type recognized by LDA/LTA.	Type0 / Type1 / Type2 / Type3 / Type4 / Type5 / Type6 / Type7	When the "ACC Data Reception Status" is "Invalid", this item is not displayed because it is invalid.
Road Class Judgement (HOF)	Judgment result for limited-access roads for vehicles (hands-off).	Not Highway / Highway	When the "Road Class Information Invalid Flag" is "Invalid", this item is not displayed because it is invalid.
Road Class Judgement (LCA)	Judgment result for limited-access roads for vehicles (LCA).	Not Highway / Highway	When the "Road Class Information Invalid Flag" is "Invalid", this item is not displayed because it is invalid.
Road Class Judgement (Navigation only)	Judgment result for limited-access roads for vehicles (by navigation).	Not Highway / Highway	When the "Road Class Information Invalid Flag" is "Invalid", this item is not displayed because it is invalid.

TESTER DISPLAY	MEASUREMENT ITEM	RANGE	DIAGNOSTIC NOTE
Provisional Service Section (Camera only)	Temporary roadway section in service judgment result (by camera)	Without / With	When the "Road Class Information Invalid Flag" is "Invalid", this item is not displayed because it is invalid.
Median Strip (Camera only)	Road median judgment result (by camera).	Without / With	When the "Road Class Information Invalid Flag" is "Invalid", this item is not displayed because it is invalid.
Road Class Judgement (Camera only)	Judgment result for limited-access roads for vehicles (by camera).	Not Highway / Highway	When the "Road Class Information Invalid Flag" is "Invalid", this item is not displayed because it is invalid.
Road Class Information Invalid Flag	Whether received CAN data is valid or invalid. Invalid when CAN data cannot be received, etc.	Valid / Invalid	-
Grip Sensor Value (Left)	Steering touch sensor (left side) detection status.	Hands OFF / Hands ON	When the "Grip Sensor Value Invalid Flag" is "Invalid", this item is not displayed because it is invalid.
Grip Sensor Value (Right)	Steering touch sensor (right side) detection status.	Hands OFF / Hands ON	When the "Grip Sensor Value Invalid Flag" is "Invalid", this item is not displayed because it is invalid.
Grip Sensor Value Invalid Flag	Whether received CAN data is valid or invalid. Invalid when CAN data cannot be received, etc.	Valid / Invalid	-
Distance of Right Guardrail and Own Vehicle	Distance between guardrail and vehicle (on right side).	0 to 25.5 m	-
Distance of Left Guardrail and Own Vehicle	Distance between guardrail and vehicle (on left side).	0 to 25.5 m	-
Rear Object1 Target Width	Rear object 1 object width.	0 to 6.3 m	-
Rear Object1 Target Direction Angle	Rear object 1 direction angle of travel.	-180 to 180 deg	-
Rear Object2 Target Width	Rear object 2 object width.	0 to 6.3 m	-
Rear Object2 Target Direction Angle	Rear object 2 direction angle of travel.	-180 to 180 deg	-
Rear Object3 Target Width	Rear object 3 object width.	0 to 6.3 m	-

TESTER DISPLAY	MEASUREMENT ITEM	RANGE	DIAGNOSTIC NOTE
Rear Object3 Target Direction Angle	Rear object 3 direction angle of travel.	-180 to 180 deg	-
Secondary Collision Brake (Rear Impacts while Stopped) Operation Request	Whether second crash brake (for rear collisions while stopped) operation request is output.	OFF / ON	-
Rear Vehicle Approaching Indication Operation Request	Whether operation request for notification of vehicle approaching from rear is output.	OFF / ON	-
Approaching Vehicle Support Operation Request 1	Whether support operation request 1 when nearby vehicle approaching from rear is output.	OFF / ON	-
Approaching Vehicle Support Operation Request 2	Whether support operation request 2 when nearby vehicle approaching from rear is output.	OFF / ON	-
Rear Object1 Secondary Collision Brake (Rear Impacts while Stopped) Operation Status	Operation status of second crash brake (for rear collisions while stopped) for rear object 1.	OFF / ON	-
Rear Object1 Rear Vehicle Approaching Indication Operation Status	Notification operation status of vehicle approaching from rear for rear object 1.	OFF / ON	-
Rear Object1 Approaching Vehicle Support Operation Status	Support operation status when nearby vehicle approaching for rear object 1.	OFF / ON	-
Rear Object2 Secondary Collision Brake (Rear Impacts while Stopped) Operation Status	Operation status of second crash brake (for rear collisions while stopped) for rear object 2.	OFF / ON	-
Rear Object2 Rear Vehicle Approaching Indication Operation Status	Notification operation status of vehicle approaching from rear for rear object 2.	OFF / ON	-
Rear Object2 Approaching Vehicle Support Operation Status	Support operation status when nearby vehicle approaching for rear object 2.	OFF / ON	-
Rear Object3 Secondary Collision Brake (Rear Impacts	Operation status of second crash brake (for rear	OFF / ON	-

TESTER DISPLAY	MEASUREMENT ITEM	RANGE	DIAGNOSTIC NOTE
while Stopped) Operation Status	collisions while stopped) for rear object 3.		
Rear Object3 Rear Vehicle Approaching Indication Operation Status	Notification operation status of vehicle approaching from rear for rear object 3.	OFF / ON	-
Rear Object3 Approaching Vehicle Support Operation Status	Support operation status when nearby vehicle approaching for rear object 3.	OFF / ON	-

