

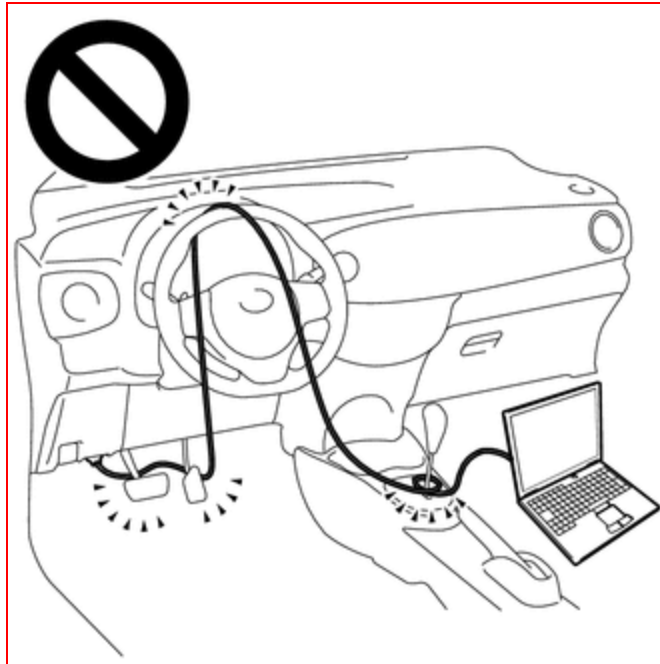
<b>Last Modified:</b> 12-04-2024	6.11:8.1.0	<b>Doc ID:</b> RM100000002BLOB
<b>Model Year Start:</b> 2023	<b>Model:</b> Prius Prime	<b>Prod Date Range:</b> [03/2023 - ]
<b>Title:</b> M20A-FXS (ENGINE CONTROL): SFI SYSTEM: PRECAUTION; 2023 - 2024 MY Prius Prius Prime [03/2023 - ]		

## **PRECAUTION**

### **WHEN USING GTS**

#### **CAUTION:**

- Strictly obey all traffic rules and regulations.
- Do not drive the vehicle with the GTS cable contacting the pedals, shift lever or steering wheel.
- Driving the vehicle with the GTS cable contacting these areas could impede vehicle control, resulting in a



serious accident.



- Do not operate the GTS while driving the vehicle.
- Operating the GTS while driving the vehicle will prevent you from paying sufficient attention to vehicle surroundings, and could result in a serious accident.

## PRECAUTIONS FOR DISCONNECTING CABLE FROM NEGATIVE (-) AUXILIARY BATTERY TERMINAL

### NOTICE:

After the ignition switch is turned off, there may be a waiting time before disconnecting the negative (-) auxiliary battery terminal.

Click here [INFO](#)

### HINT:

When disconnecting and reconnecting the auxiliary battery, there is an automatic learning function that completes learning when the respective system is used.

Click here [INFO](#)

## INITIALIZATION

### NOTICE:

When the ECM is replaced, update the ECU security key.

Click here [INFO](#)

## PRECAUTIONS FOR INSPECTING HYBRID CONTROL SYSTEM

(a) Refer to Hybrid Control System.

for HEV Model: Click here [INFO](#)

for PHEV Model: Click here [INFO](#)

## NOTICE FOR HYBRID CONTROL SYSTEM ACTIVATION

(a) Refer to Hybrid Control System.

for HEV Model: Click here [INFO](#)

for PHEV Model: Click here [INFO](#)

