

<b>Last Modified:</b> 12-04-2024	6.11:8.1.0	<b>Doc ID:</b> RM100000002BJB5
<b>Model Year Start:</b> 2023	<b>Model:</b> Prius Prime	<b>Prod Date Range:</b> [03/2023 - ]
<b>Title:</b> SEAT: FRONT SEAT ASSEMBLY (for Power Seat): REMOVAL; 2023 - 2024 MY Prius Prius Prime [03/2023 - ]		

## REMOVAL

### CAUTION / NOTICE / HINT

The necessary procedures (adjustment, calibration, initialization, or registration) that must be performed after parts are removed and installed, or replaced during front seat assembly removal/installation are shown below.

#### Necessary Procedures After Parts Removed/Installed/Replaced

REPLACED PART OR PERFORMED PROCEDURE	NECESSARY PROCEDURE	EFFECT/INOPERATIVE FUNCTION WHEN NECESSARY PROCEDURE NOT PERFORMED	LINK
<ul style="list-style-type: none"> <li>• Position control ECU assembly LH*</li> <li>• Front seatback frame sub-assembly LH*</li> <li>• Front seat adjuster assembly LH*</li> <li>• Power seat lifter motor assembly LH*</li> <li>• Power seat tilt motor assembly LH*</li> <li>• Upper seat track rail sub-assembly LH</li> </ul>	Initialize position control ECU	Front Power Seat Control System (w/ Memory)	<a href="#">INFO</a>

\*: Even when not replacing the part, it is necessary to perform the specified necessary procedures after installation.

#### CAUTION:

- Be sure to read Precaution thoroughly before servicing.

Click here [INFO](#)



- Wear protective gloves. Sharp areas on the parts may injure your hands.



**NOTICE:**

If the front seat airbag assembly has been deployed, replace the front seat airbag assembly, front seatback frame sub-assembly, separate type front seatback pad, separate type front seatback cover with the necessary parts in accordance with the extent of the collision damage.

**CAUTION / NOTICE / HINT**

**HINT:**

When the cable is disconnected / reconnected to the auxiliary battery terminal, systems temporarily stop operating. However, each system has a function that completes learning the first time the system is used.

- Learning completes when vehicle is driven

EFFECT/INOPERATIVE FUNCTION WHEN NECESSARY PROCEDURE NOT PERFORMED	NECESSARY PROCEDURE	LINK
Front Camera System	Drive the vehicle straight ahead at 35 km/h (22 mph) or more for 5 seconds or more.	<a href="#">INFO</a>

- Learning completes when vehicle is operated normally

EFFECT/INOPERATIVE FUNCTION WHEN NECESSARY PROCEDURE NOT PERFORMED	NECESSARY PROCEDURE	LINK
Power Door Lock Control System*1 <ul style="list-style-type: none"> <li>◦ Back door opener</li> </ul>	Perform door unlock operation with door control switch or electrical key transmitter sub-assembly switch.	<a href="#">INFO</a>
Power Back Door System*2	Reset back door close position	<a href="#">INFO</a>
Air Conditioning System	<b>for HEV Model:</b> After the ignition switch is turned to ON, the servo motor standard position is recognized. <b>for PHEV Model:</b>	-

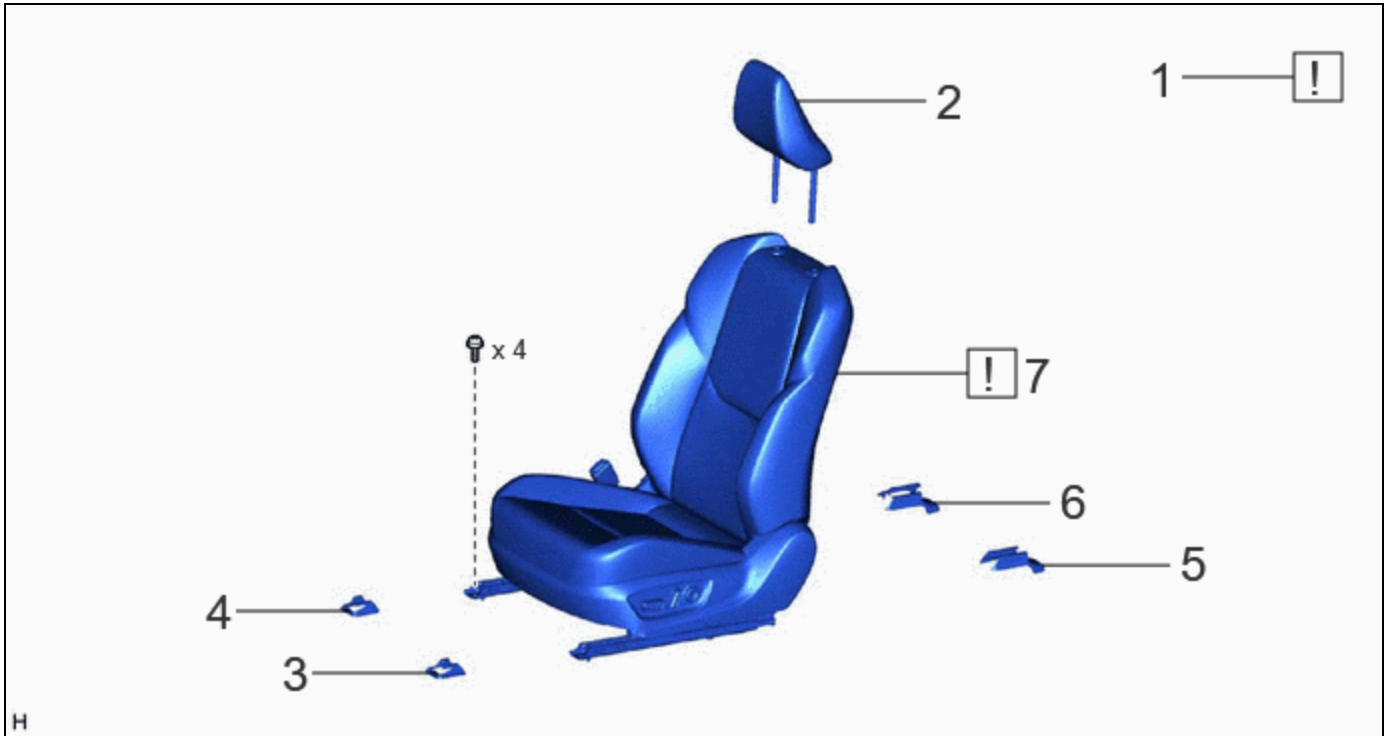
\*1: w/o Power Back Door System

\*2: w/ Power Back Door System

EFFECT/INOPERATIVE FUNCTION WHEN NECESSARY PROCEDURE NOT PERFORMED	NECESSARY PROCEDURE	LINK
	After the ignition switch is turned to ON, the servo motor and expansion valve standard position is recognized.	
*1: w/o Power Back Door System *2: w/ Power Back Door System		

## CAUTION / NOTICE / HINT

### COMPONENTS (REMOVAL)



PROCEDURE	PART NAME CODE			
1 PRECAUTION	-		-	-
2 FRONT SEAT HEADREST ASSEMBLY	71910A	-	-	-
3 FRONT OUTER SEAT TRACK BRACKET COVER	72124	-	-	-
4 FRONT INNER SEAT TRACK BRACKET COVER	72128A	-	-	-
5 REAR OUTER SEAT TRACK BRACKET COVER	72138N	-	-	-
6 INNER SEAT TRACK BRACKET COVER	72158	-	-	-
7 FRONT SEAT ASSEMBLY	-		-	-

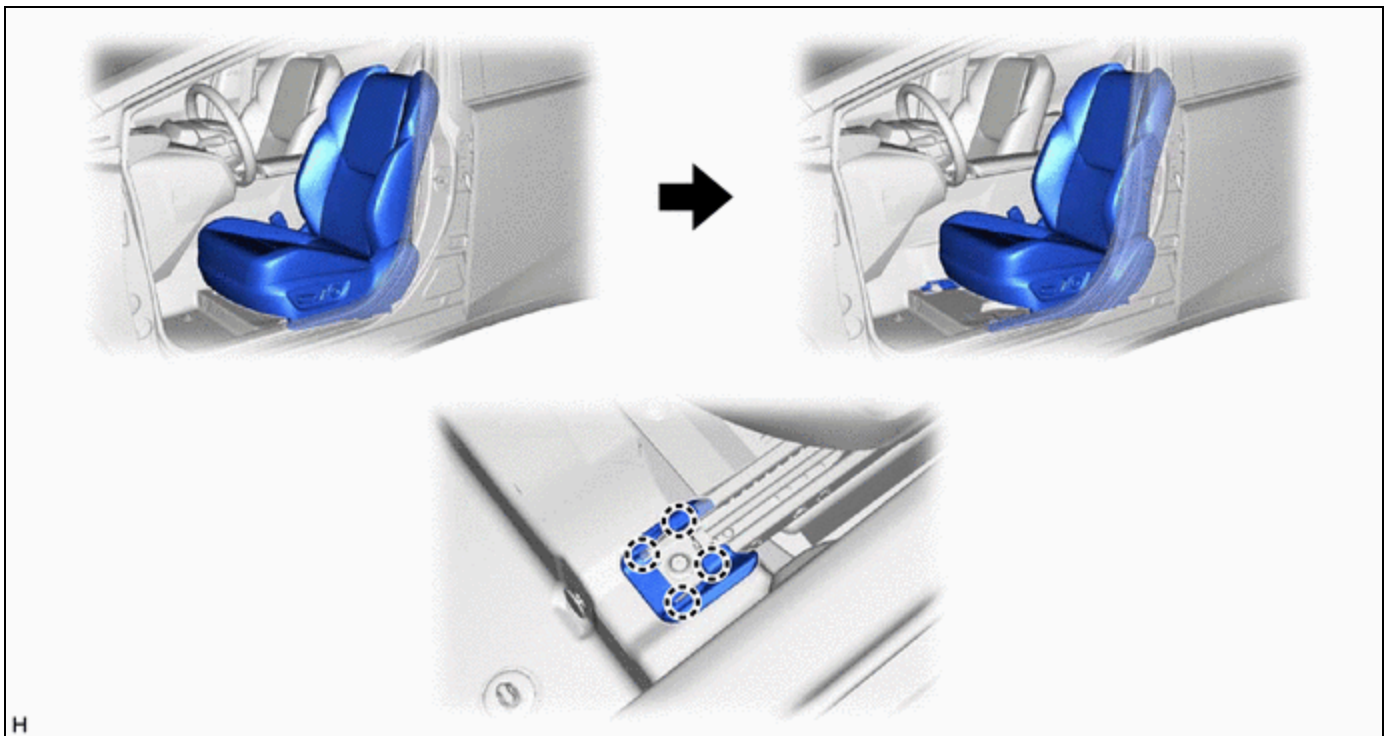
## PROCEDURE

### 1. PRECAUTION

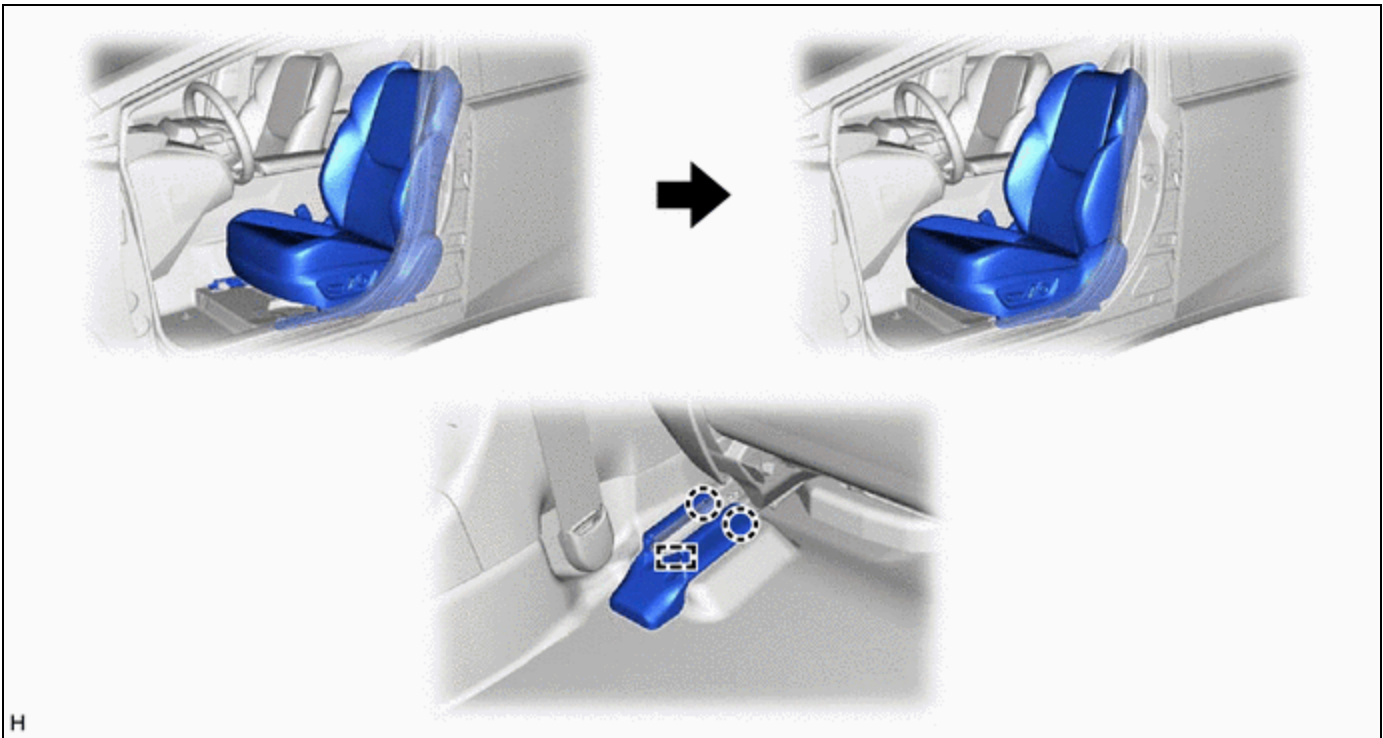
**NOTICE:**

After the ignition switch is turned off, there may be a waiting time before disconnecting the negative (-) auxiliary battery terminal.

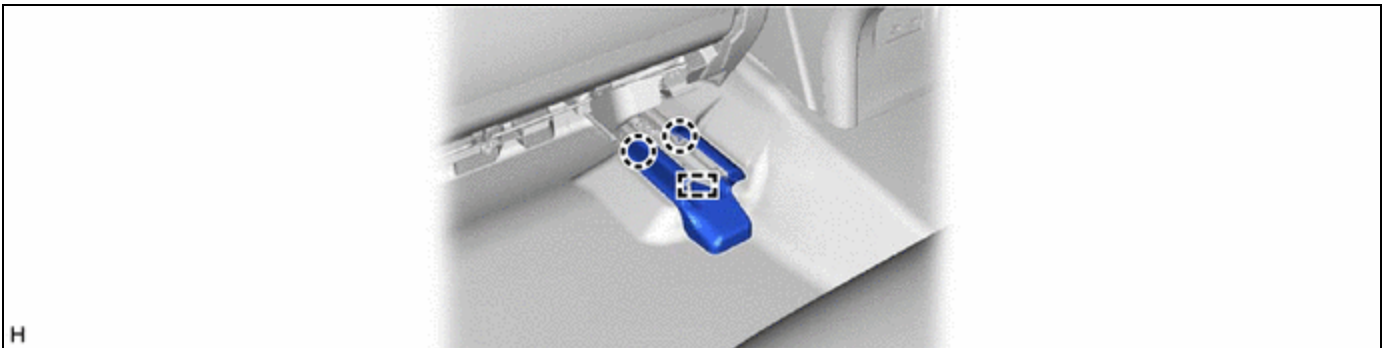
Click here [INFO](#)

**2. REMOVE FRONT SEAT HEADREST ASSEMBLY****3. REMOVE FRONT OUTER SEAT TRACK BRACKET COVER****4. REMOVE FRONT INNER SEAT TRACK BRACKET COVER**

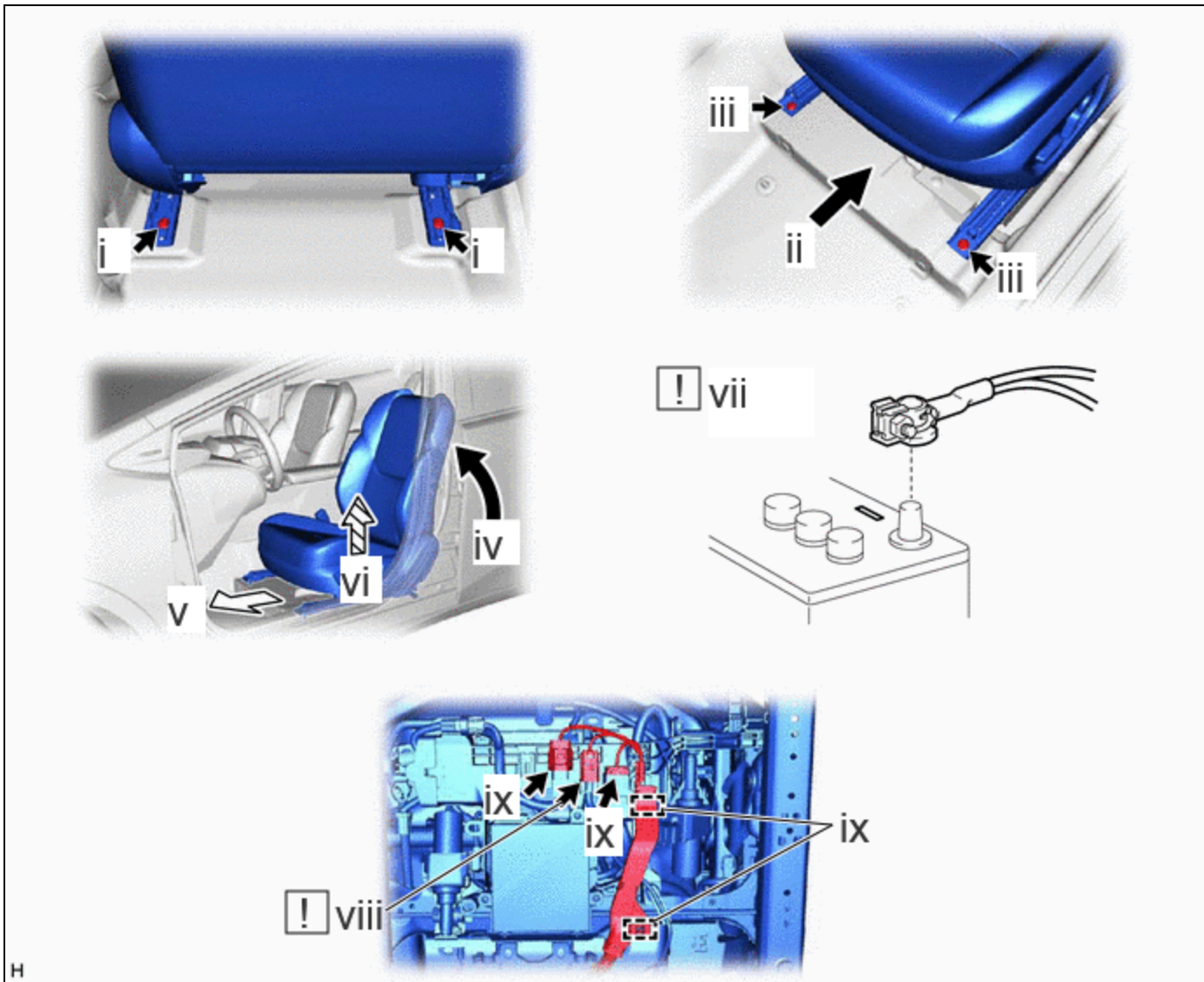
**5. REMOVE REAR OUTER SEAT TRACK BRACKET COVER**



**6. REMOVE INNER SEAT TRACK BRACKET COVER**



**7. REMOVE FRONT SEAT ASSEMBLY**



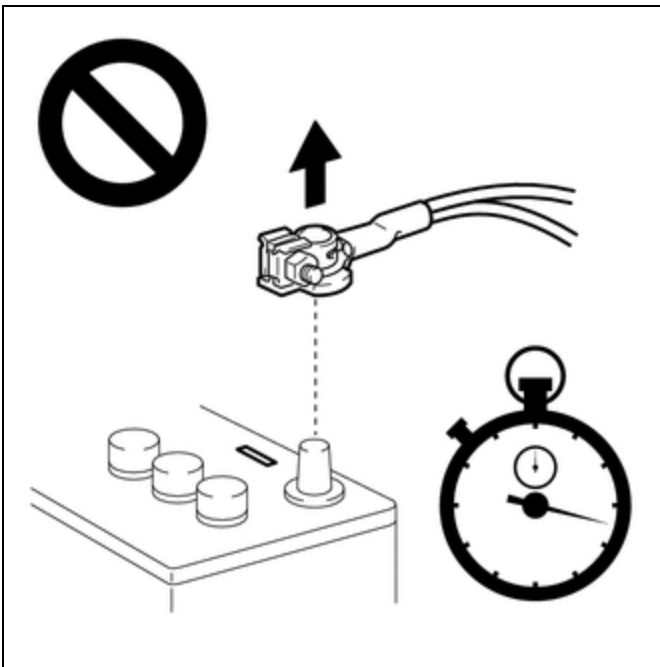
- (1) Using a T50 "TORX" socket wrench, remove the 2 bolts on the rear side of the front seat assembly.
- (2) Operate the slide and vertical power seat switch knob and move the front seat assembly to the rearmost position.
- (3) Using a T50 "TORX" socket wrench, remove the 2 bolts on the front side of the front seat assembly.
- (4) Operate the reclining power seat switch knob and move the seatback to the upright position.
- (5) Operate the slide and vertical power seat switch knob and move the front seat assembly to the center position.
- (6) Operate the slide and vertical power seat switch knob and move the front seat assembly to the uppermost position.
- (7) Disconnect the cable from the negative (-) auxiliary battery terminal.

M20A-FXS: Click here [INFO](#)

2ZR-FXE: Click here [INFO](#)

### CAUTION:

Wait at least 60 seconds after disconnecting the cable from the negative (-) auxiliary battery terminal to disable the SRS system.



(8) Disconnect the front seat airbag assembly connector under the front seat assembly.

**NOTICE:**

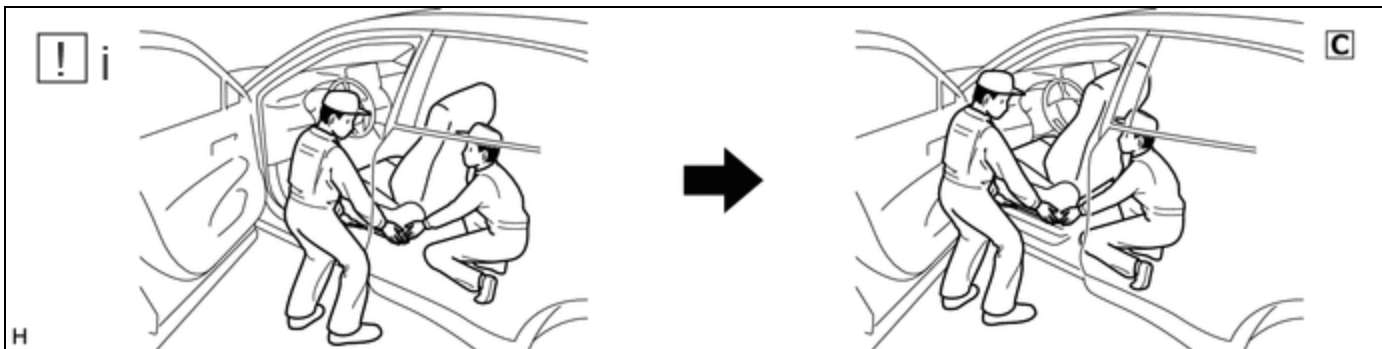
When disconnecting any airbag connector, take care not to damage the airbag wire harness.

**HINT:**

Refer to How to Connect or Disconnect Airbag Connector.

Click here [INFO](#)

(9) Disconnect each connector and disengage each clamp under the front seat assembly.



(1) Remove the front seat assembly.

**NOTICE:**

Be careful not to damage the vehicle body.

