

Last Modified: 12-04-2024	6.11:8.1.0	Doc ID: RM100000029QF0
Model Year Start: 2023	Model: Prius Prime	Prod Date Range: [12/2022 -]
Title: EXTERIOR PANELS / TRIM: REAR DOOR WINDOW FRAME MOULDING: INSTALLATION; 2023 - 2024 MY Prius Prius Prime [12/2022 -]		

INSTALLATION

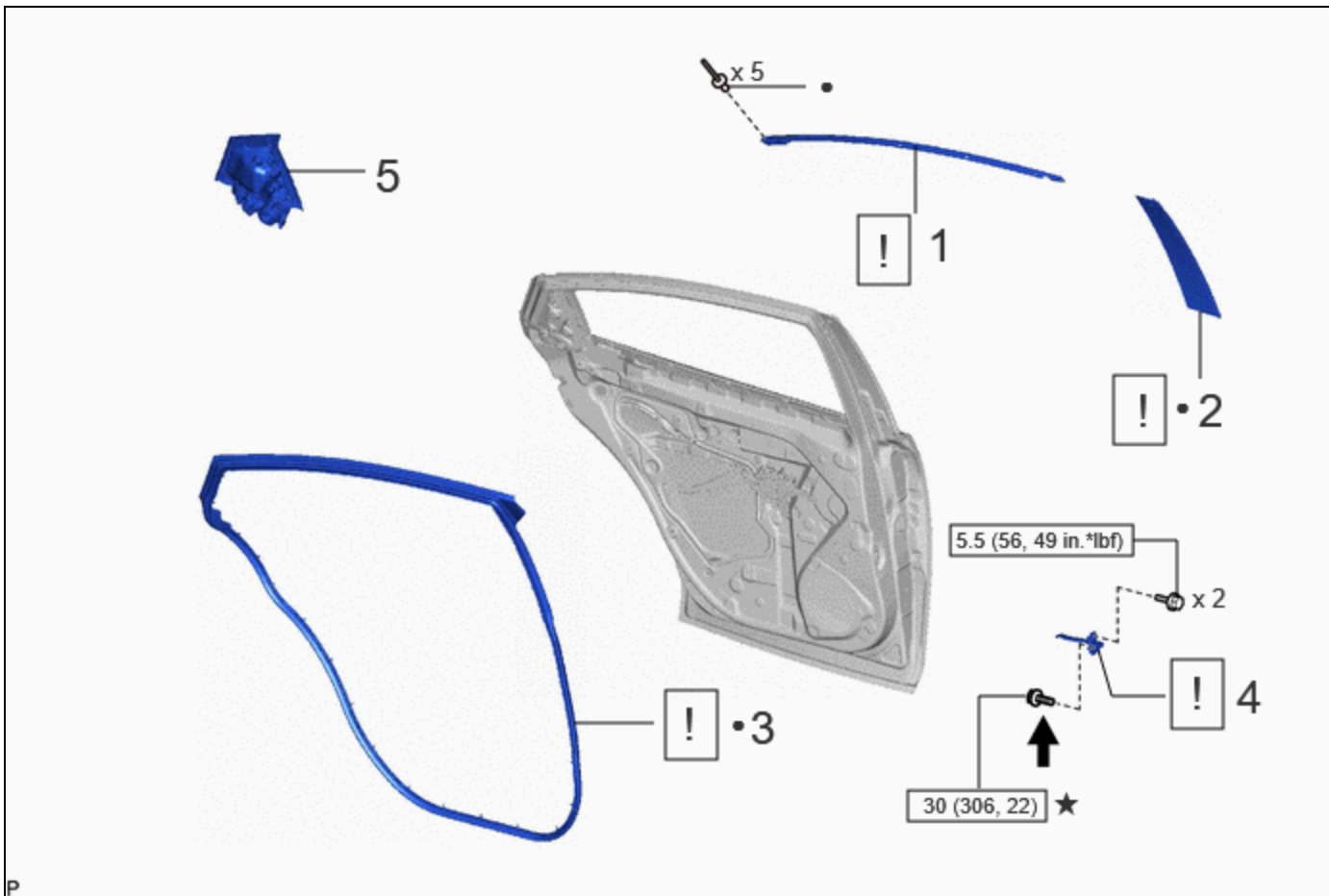
CAUTION / NOTICE / HINT

HINT:




- Use the same procedure for the RH side and LH side.
- The following procedure is for the LH side.

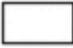

CAUTION / NOTICE / HINT

COMPONENTS (INSTALLATION)



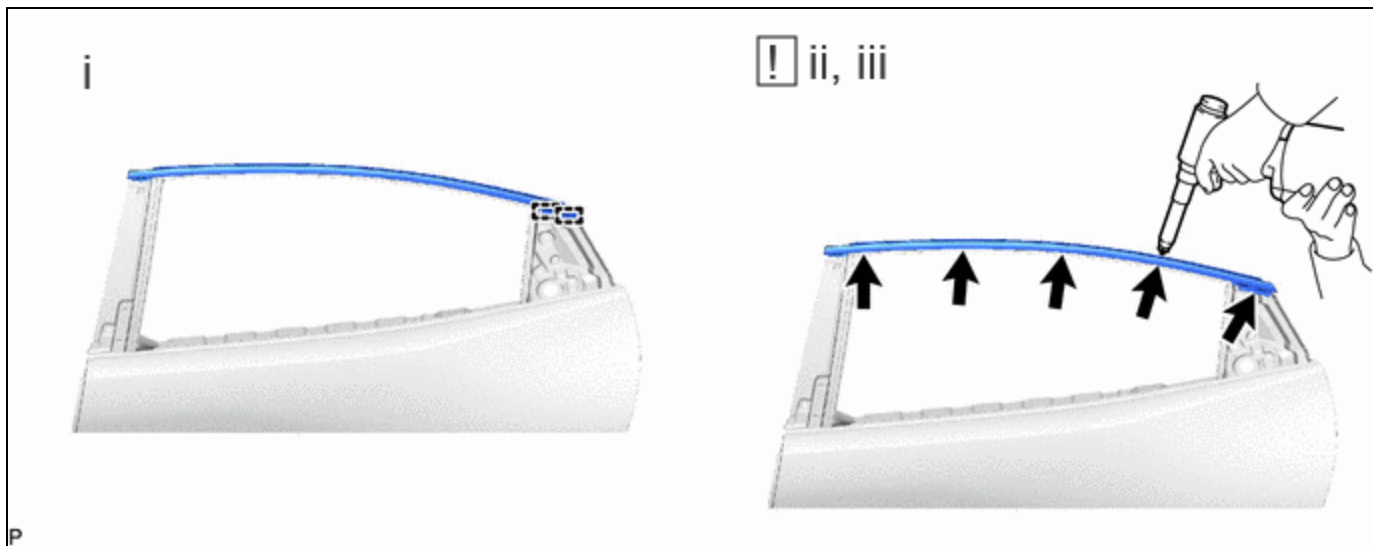
	PROCEDURE	PART NAME CODE	!	✍	⚙
1	REAR DOOR WINDOW FRAME UPPER MOULDING	75764A	INFO	-	-
2	REAR DOOR WINDOW FRAME FRONT MOULDING	75762A	INFO	-	-

	PROCEDURE	PART NAME CODE			
3	REAR DOOR WEATHERSTRIP	67872	INFO	-	-
4	REAR DOOR CHECK ASSEMBLY	68630	INFO	-	-
5	REAR DOOR OUTSIDE HANDLE ASSEMBLY	69240	-	-	-

	N*m (kgf*cm, ft.*lbf): Specified torque	• Non-reusable part
	Toyota Genuine Adhesive 1324, Three Bond 1324 or equivalent	★ Precoated part

PROCEDURE

1. INSTALL REAR DOOR WINDOW FRAME UPPER MOULDING



- (1) Engage the 2 guides to temporarily install the rear door window frame upper moulding to the vehicle body.
- (2) Install a No. 4 nose piece to an air riveter and insert the mandrel section of a new 4 mm diameter rivet into the nose piece.
- (3) Press the rivets perpendicularly to the installation holes. Using the air riveter, install the rear door window frame upper moulding with the 5 rivets.

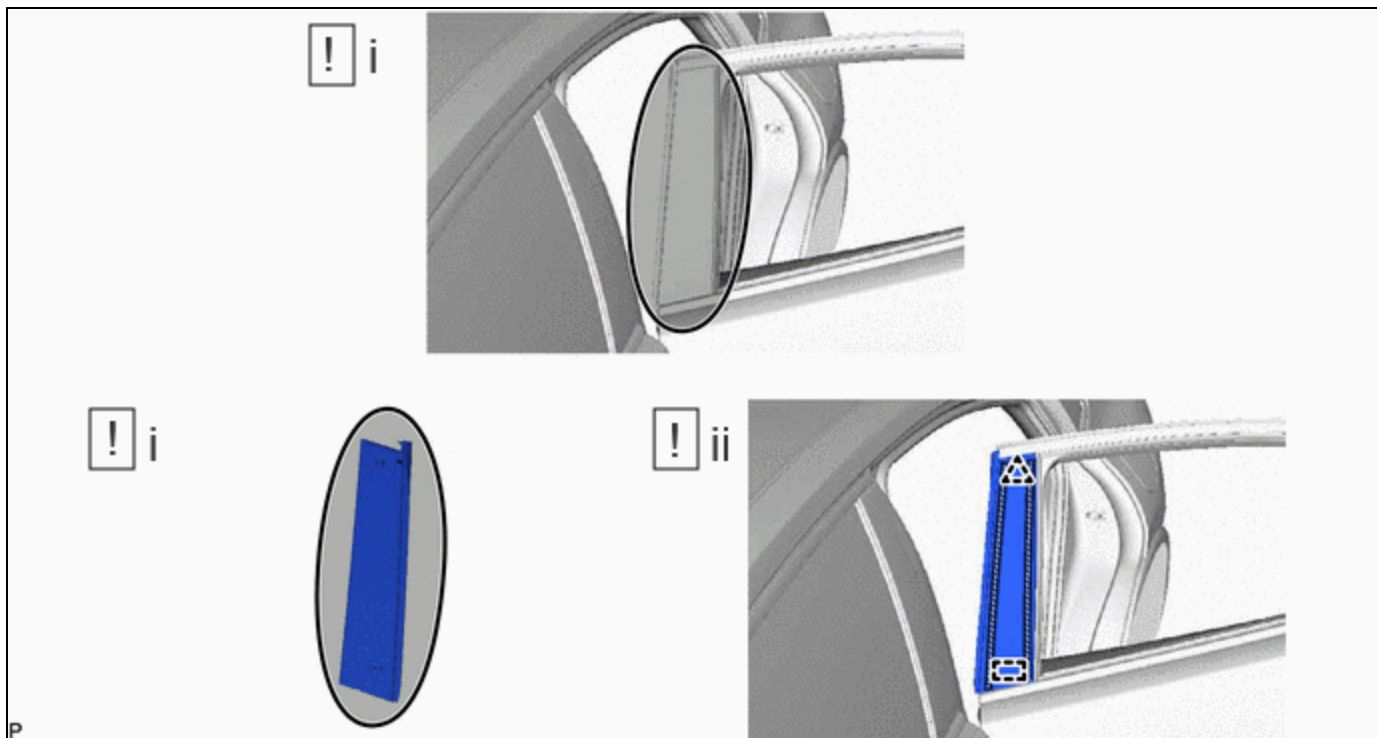
NOTICE:

- When installing the rivets to the panel surface, do not tilt the riveter.
- Do not leave a gap between the rivet head portion and the panel.

HINT:

Pull the trigger again to cut off the rivet if it is not cut off.

2. INSTALL REAR DOOR WINDOW FRAME FRONT MOULDING



	Heating Area	-	-
---	--------------	---	---

(1) Clean the vehicle body surface.

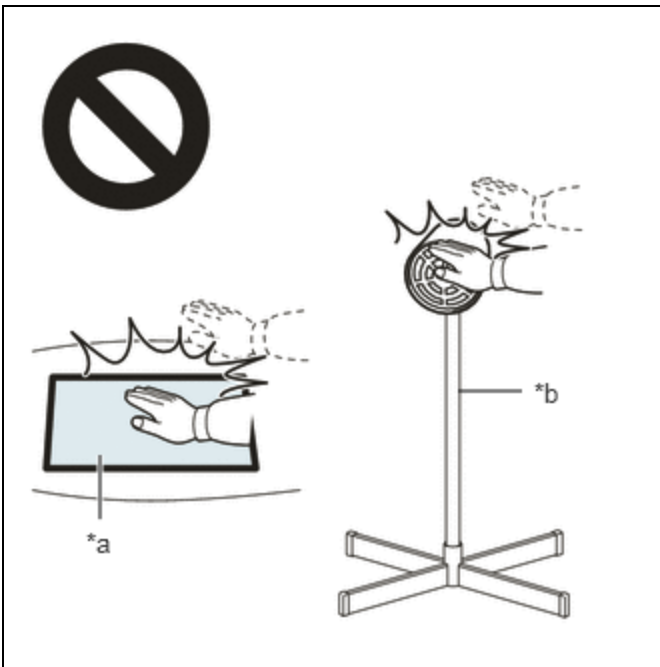
1. Using a heat light, heat the double-sided tape remaining on the vehicle body and rear door window frame front moulding.

Heating Temperature

AREA	TEMPERATURE	AREA	TEMPERATURE
Vehicle Body	40 to 60 °C (104 to 140 °F)	Rear Door Window Frame Front Moulding	20 to 30 °C (68 to 86 °F)

CAUTION:

- Do not touch the heat light and heated parts, touching the heat light may result in burns.
- Touching heated parts for a long time may result in burns.



*a	Heated Part
*b	Heat Light

NOTICE:

Do not heat the vehicle body excessively.

2. Remove any remaining double-sided tape from the vehicle body.
 3. Wipe off any tape adhesive residue with cleaner.
- (2) Install a new rear door window frame front moulding.
1. Remove the release paper from the rear door window frame front moulding.

HINT:

After removing the release paper, keep the exposed adhesive free from foreign matter.

2. Engage the guide, clip and attach the double-sided tape to install the rear rear door window frame front moulding.

HINT:

Press the rear door window frame front moulding firmly to install it.

3. INSTALL REAR DOOR WEATHERSTRIP

	Click here INFO
--	--

4. INSTALL REAR DOOR CHECK ASSEMBLY

	Click here INFO
--	--

5. INSTALL REAR DOOR OUTSIDE HANDLE ASSEMBLY

Click here 

