

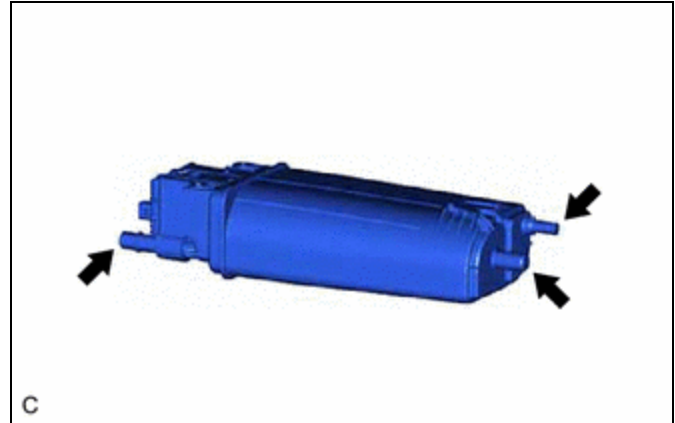
Last Modified: 12-04-2024	6.11:8.1.0	Doc ID: RM100000002AZY
Model Year Start: 2023	Model: Prius Prime	Prod Date Range: [03/2023 -]
Title: M20A-FXS (EMISSION CONTROL): CANISTER (for PHEV Model): INSPECTION; 2023 - 2024 MY Prius Prime [03/2023 -]		

INSPECTION

PROCEDURE

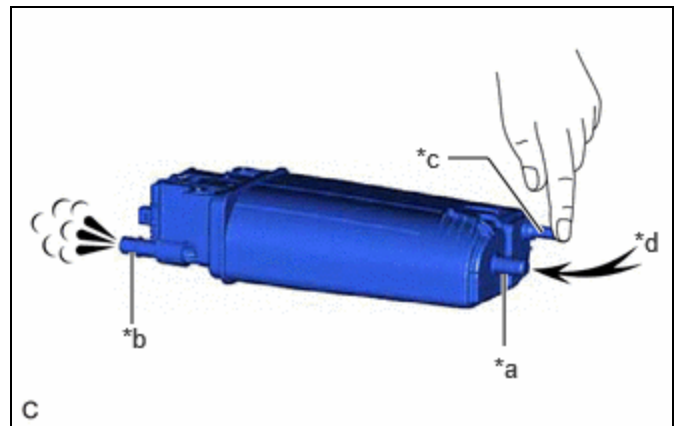
1. INSPECT CANISTER (CHARCOAL CANISTER ASSEMBLY) (VISUALLY CHECK)

- (a) Visually check the canister (charcoal canister assembly) for cracks or damage.
If cracks or damage are found, replace the canister (charcoal canister assembly).



2. INSPECT CANISTER (CHARCOAL CANISTER ASSEMBLY) (OPERATION CHECK)

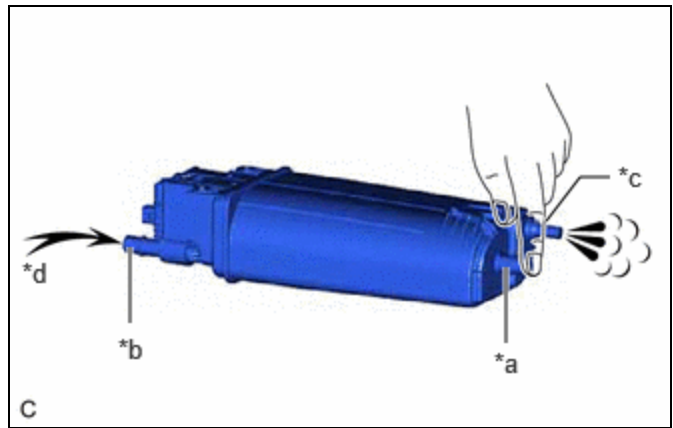
- (a) With the purge line port closed, blow 0.5 kPa (0.005 kgf/cm², 0.1 psi) of air into the vent line port, and check that air flows from the air line port.
If the result is not as specified, replace the canister (charcoal canister assembly).



*a	Vent Line Port
*b	Air Line Port
*c	Purge Line Port
*d	Air

- (b) With the vent line port closed, blow 0.5 kPa (0.005 kgf/cm², 0.1 psi) of air into the air line port, and check that air flows from the purge line port.

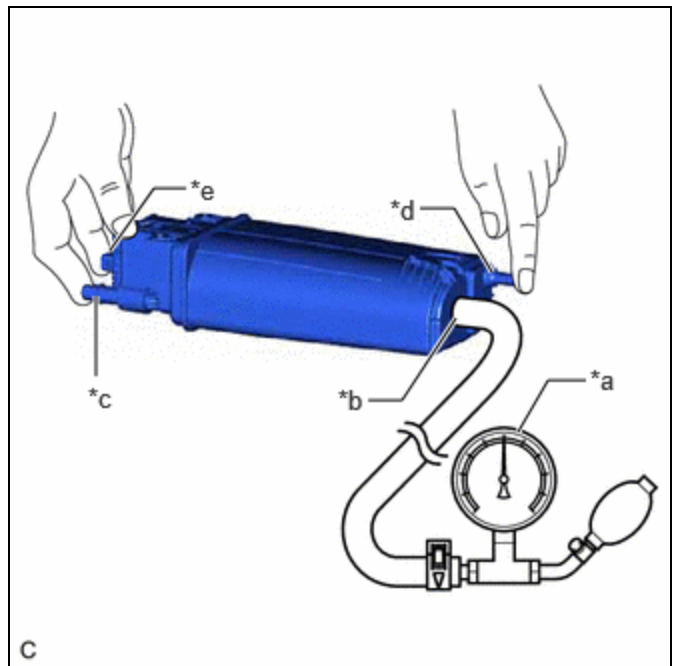
If the result is not as specified, replace the canister (charcoal canister assembly).



*a	Vent Line Port
*b	Air Line Port
*c	Purge Line Port
*d	Air

3. INSPECT CANISTER (CHARCOAL CANISTER ASSEMBLY) (CHECK FOR AIR LEAKS)

Pre-procedure1



(a) Connect a pressure gauge to the vent line port.

*a	Pressure Gauge
*b	Vent Line Port
*c	Air Line Port
*d	Purge Line Port
*e	Leak Detection Pump Sub-assembly Connector

Procedure1

- (b) With the purge line port, air line port and leak detection pump sub-assembly connector closed, apply 20 kPa (150 mmHg, 5.91 in. Hg) of pressurized air into the vent line port, then confirm that pressure is maintained for 1 minute.

If the result is not as specified, replace the canister (charcoal canister assembly).

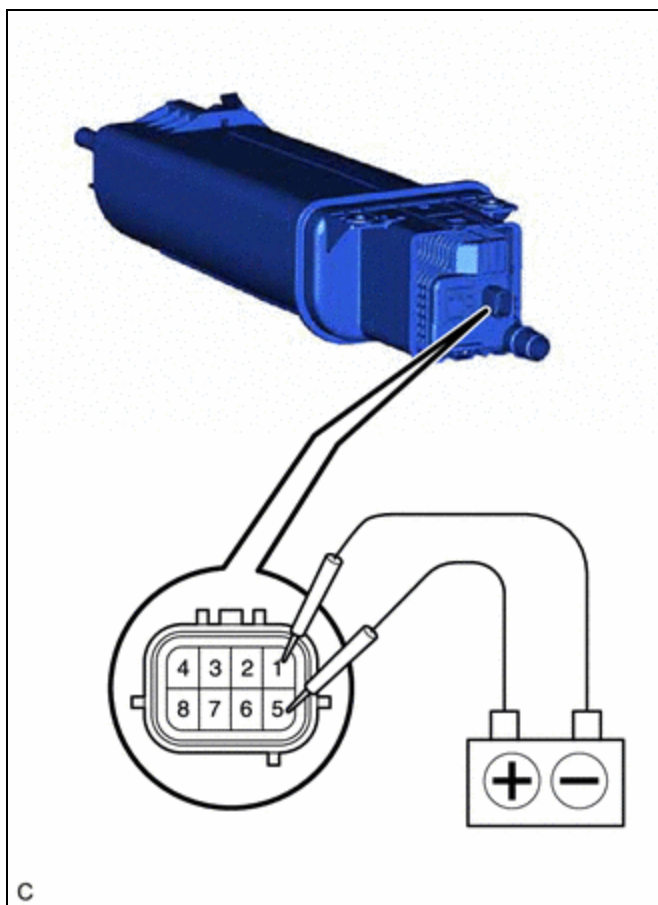
Post-procedure1

- (c) None

4. INSPECT CANISTER (CHARCOAL CANISTER ASSEMBLY) (CHECK LEAK DETECTION PUMP SUB-ASSEMBLY)

Pre-procedure1

- (a) Connect a positive (+) auxiliary battery lead to terminal 5 and a negative (-) auxiliary battery lead to terminal 1.



Procedure1

- (b) Check that a clicking sound is heard from the leak detection pump sub-assembly.

If the result is not as specified, replace the leak detection pump sub-assembly.

Post-procedure1

- (c) None

