

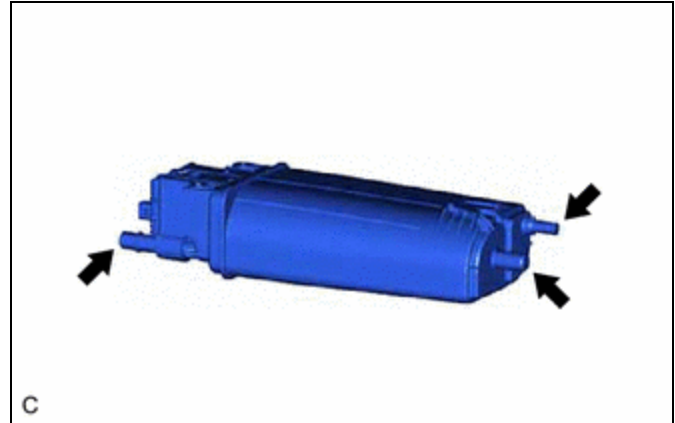
<b>Last Modified:</b> 12-04-2024	6.11:8.1.0	<b>Doc ID:</b> RM1000000029UW1
<b>Model Year Start:</b> 2023	<b>Model:</b> Prius	<b>Prod Date Range:</b> [12/2022 - ]
<b>Title:</b> M20A-FXS (EMISSION CONTROL): CANISTER (for HEV Model): INSPECTION; 2023 - 2024 MY Prius [12/2022 - ]		

## INSPECTION

### PROCEDURE

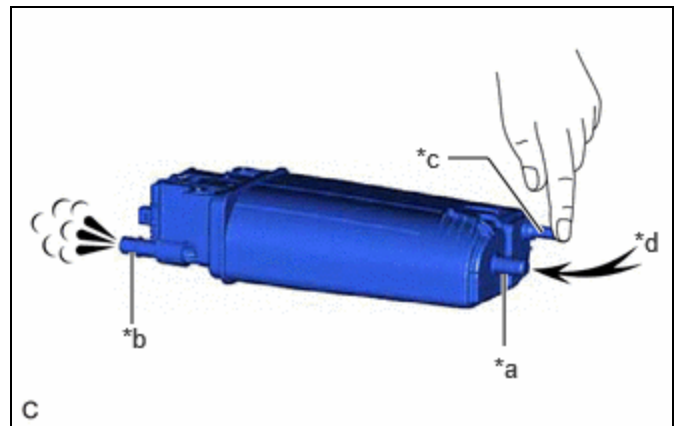
#### 1. INSPECT CANISTER (CHARCOAL CANISTER ASSEMBLY) (VISUALLY CHECK)

- (a) Visually check the canister (charcoal canister assembly) for cracks or damage.  
If cracks or damage are found, replace the canister (charcoal canister assembly).



#### 2. INSPECT CANISTER (CHARCOAL CANISTER ASSEMBLY) (OPERATION CHECK)

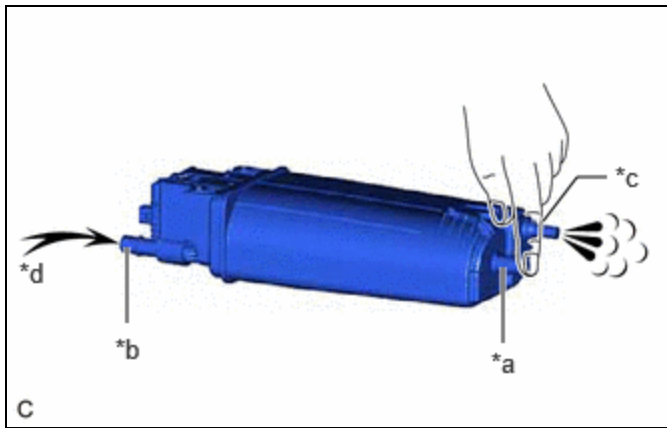
- (a) With the purge line port closed, blow 0.5 kPa (0.005 kgf/cm<sup>2</sup>, 0.1 psi) of air into the vent line port, and check that air flows from the air line port.  
If the result is not as specified, replace the canister (charcoal canister assembly).



*a	Vent Line Port
*b	Air Line Port
*c	Purge Line Port
*d	Air

- (b) With the vent line port closed, blow 0.5 kPa (0.005 kgf/cm<sup>2</sup>, 0.1 psi) of air into the air line port, and check that air flows from the purge line port.

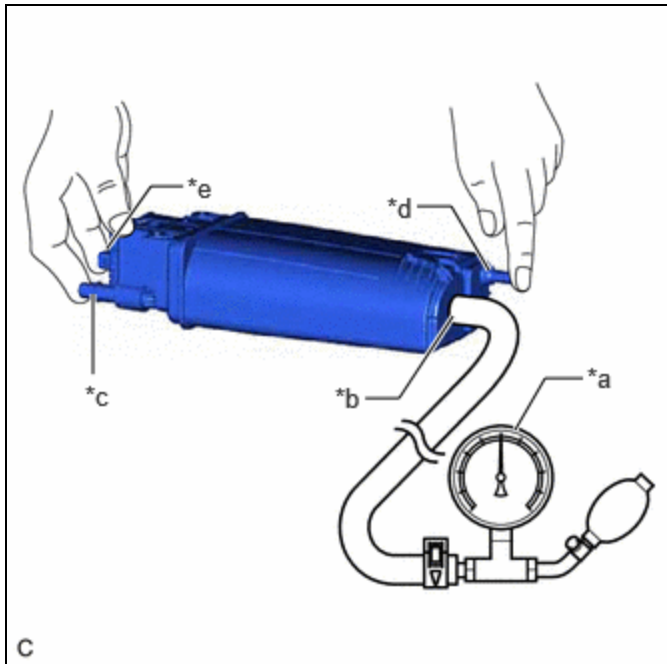
If the result is not as specified, replace the canister (charcoal canister assembly).



*a	Vent Line Port
*b	Air Line Port
*c	Purge Line Port
*d	Air

### 3. INSPECT CANISTER (CHARCOAL CANISTER ASSEMBLY) (CHECK FOR AIR LEAKS)

Pre-procedure1



(a) Connect a pressure gauge to the vent line port.

*a	Pressure Gauge
*b	Vent Line Port
*c	Air Line Port
*d	Purge Line Port
*e	Leak Detection Pump Sub-assembly Connector

## Procedure1

- (b) With the purge line port, air line port and leak detection pump sub-assembly connector closed, apply 20 kPa (150 mmHg, 5.91 in. Hg) of pressurized air into the vent line port, then confirm that pressure is maintained for 1 minute.

If the result is not as specified, replace the canister (charcoal canister assembly).

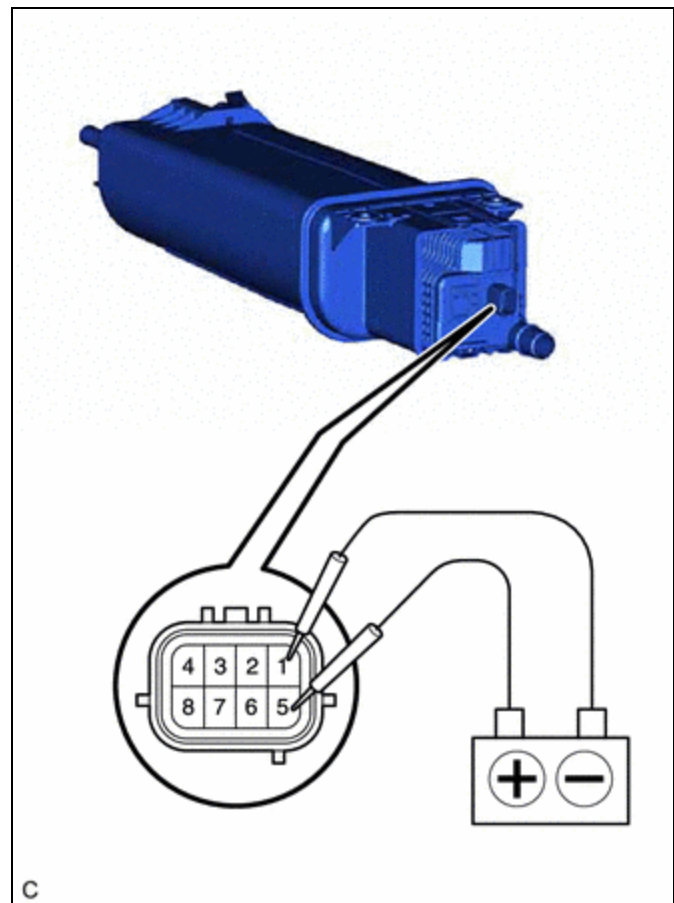
## Post-procedure1

- (c) None

#### 4. INSPECT CANISTER (CHARCOAL CANISTER ASSEMBLY) (CHECK LEAK DETECTION PUMP SUB-ASSEMBLY)

## Pre-procedure1

- (a) Connect a positive (+) auxiliary battery lead to terminal 5 and a negative (-) auxiliary battery lead to terminal 1.



## Procedure1

- (b) Check that a clicking sound is heard from the leak detection pump sub-assembly.

If the result is not as specified, replace the leak detection pump sub-assembly.

## Post-procedure1

- (c) None

