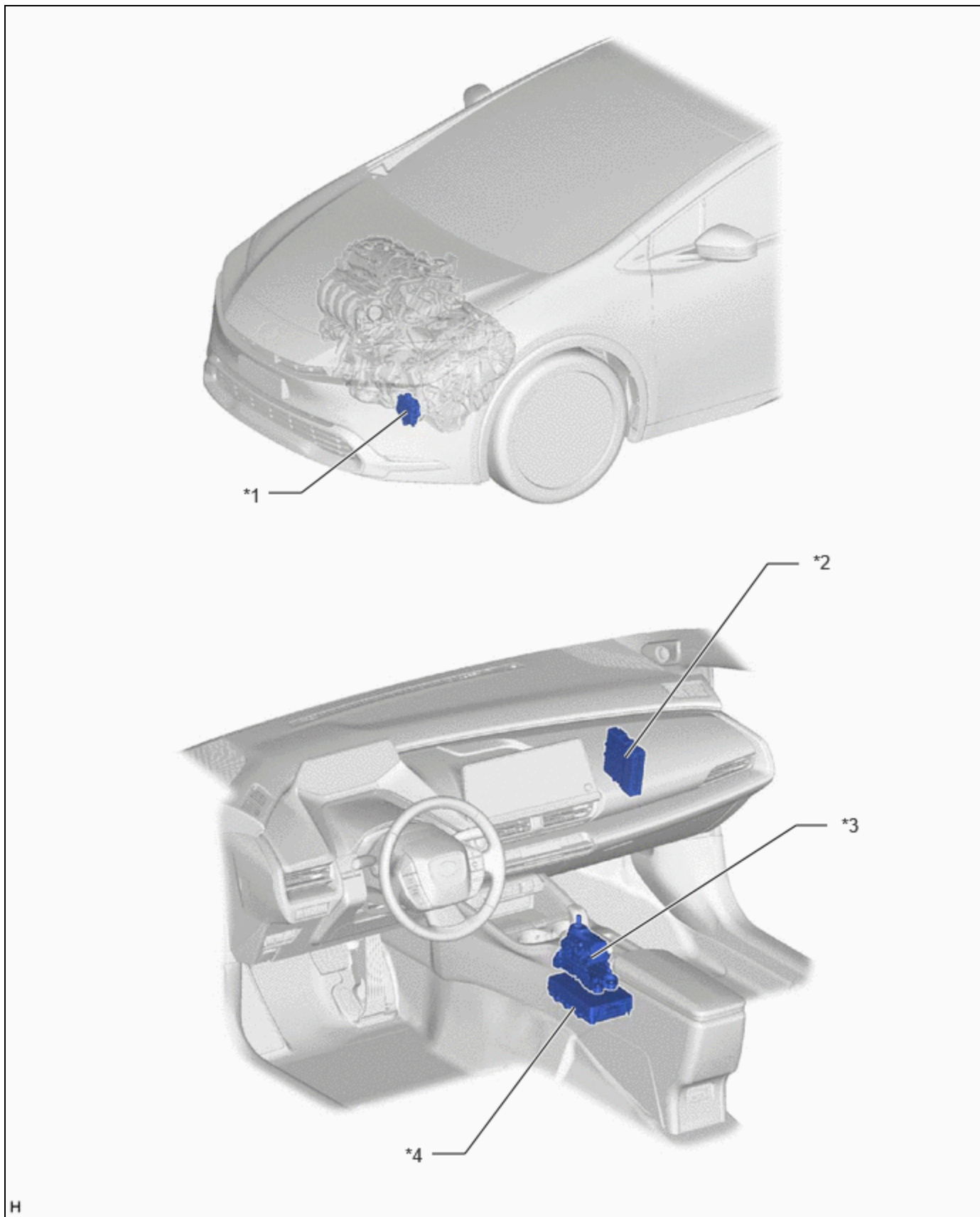


Last Modified: 12-04-2024	6.11:8.1.0	Doc ID: RM10000002A050
Model Year Start: 2023	Model: Prius Prime	Prod Date Range: [12/2022 -]
Title: PA10/PB10/PB12 (HYBRID TRANSMISSION / TRANSAXLE): ELECTRONIC SHIFT LEVER SYSTEM: PARTS LOCATION; 2023 - 2024 MY Prius Prius Prime [12/2022 -]		

[PARTS LOCATION](#)

[ILLUSTRATION](#)



*1	SHIFT CONTROL ACTUATOR ASSEMBLY <ul style="list-style-type: none">• SHIFT ACTUATOR ECU• ROTATION ANGLE SENSOR• ACTUATOR MOTOR	*2	HYBRID VEHICLE CONTROL ECU
*3	TRANSMISSION FLOOR SHIFT ASSEMBLY <ul style="list-style-type: none">• SHIFT CONTROL ECU• P POSITION SWITCH• SHIFT LEVER ASSEMBLY• SHIFT SENSOR	*4	INTEGRATED CAPACITOR (INTEGRATION CONTROL SUPPLY)

