

Last Modified: 12-04-2024	6.11:8.1.0	Doc ID: RM100000028VNW
Model Year Start: 2023	Model: Prius Prime	Prod Date Range: [12/2022 -]
Title: PARK ASSIST / MONITORING: TELEVISION CAMERA (for Rear): REMOVAL; 2023 - 2024 MY Prius Prius Prime [12/2022 -]		

REMOVAL

CAUTION / NOTICE / HINT

The necessary procedures (adjustment, calibration, initialization or registration) that must be performed after parts are removed and installed, or replaced during rear television camera assembly removal/installation are shown below.

Necessary Procedures After Parts Removed/Installed/Replaced

REPLACED PART OR PERFORMED PROCEDURE	NECESSARY PROCEDURES	EFFECT/INOPERATIVE FUNCTION WHEN NECESSARY PROCEDURES ARE NOT PERFORMED	LINK
Rear television camera assembly	<ul style="list-style-type: none"> • Parking assist monitor system initialization* • Rear television camera assembly optical axis (Back camera position setting)* 	Parking Assist Monitor System	INFO
	Rear television camera view adjustment*	Parking Support Brake system	INFO
		Panoramic View Monitor System	INFO
		Advanced Park	INFO
Camera cleaner setting operation*1	Multimedia switch is not displayed	INFO	
Replacement or removal and installation of 2 or more parts: <ul style="list-style-type: none"> • Front television camera assembly, Radiator grille or Front bumper assembly • Rear television camera assembly • Side television camera assembly LH, Parking assist light LH or Outer rear view mirror assembly LH • Side television camera assembly RH, Parking assist light RH or Outer 	Television camera view adjustment	Panoramic View Monitor System	INFO

*: Even when not replacing the part, it is necessary to perform the specified necessary procedures after installation.

*1: w/ Rear Camera Cleaner System

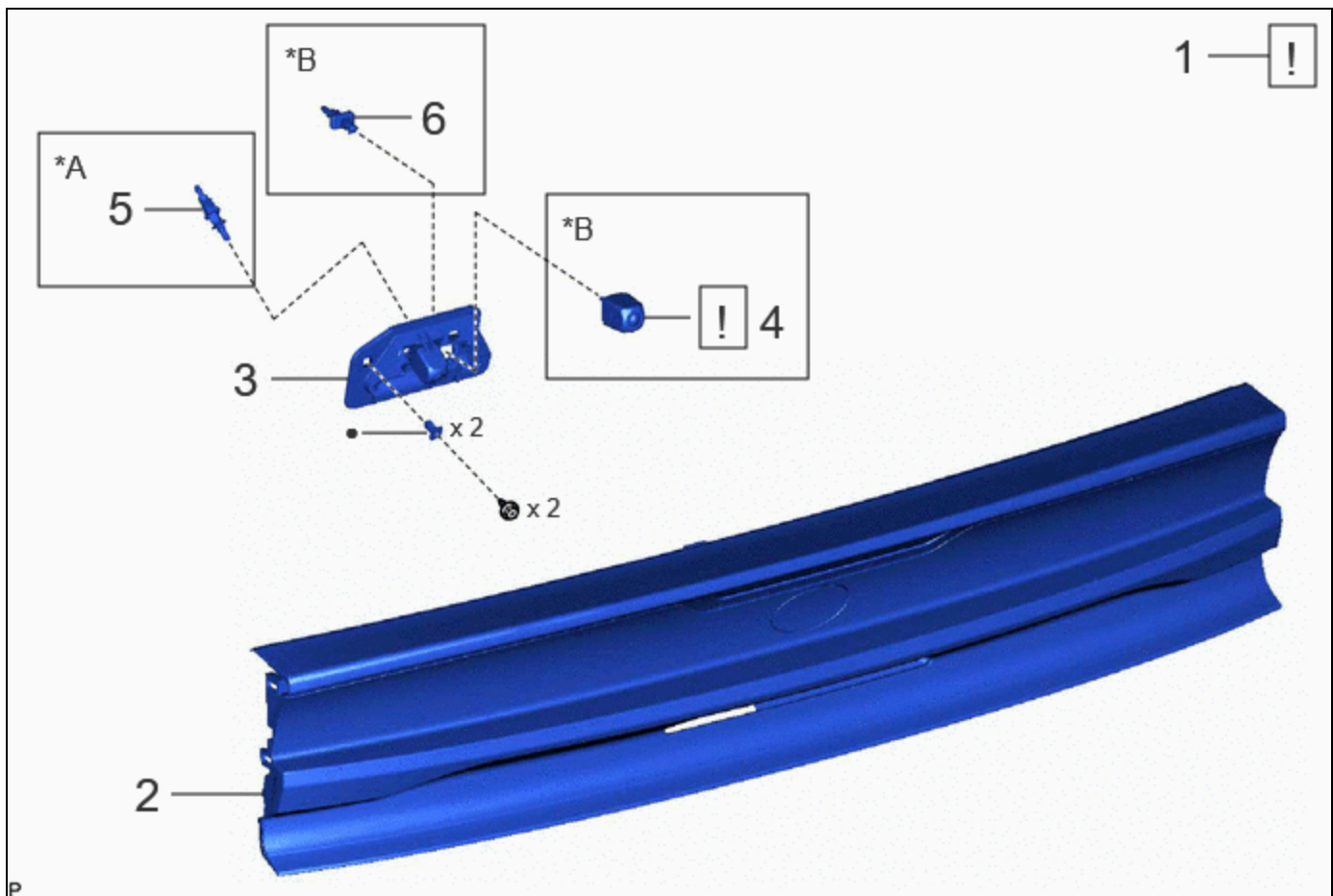
REPLACED PART OR PERFORMED PROCEDURE	NECESSARY PROCEDURES	EFFECT/INOPERATIVE FUNCTION WHEN NECESSARY PROCEDURES ARE NOT PERFORMED	LINK
rear view mirror assembly RH			

*: Even when not replacing the part, it is necessary to perform the specified necessary procedures after installation.




*1: w/ Rear Camera Cleaner System

CAUTION / NOTICE / HINT

COMPONENTS (REMOVAL)




	PROCEDURE	PART NAME CODE	!	📄	⚙️
1	PRECAUTION	-	INFO	-	-
2	REAR LIGHT ASSEMBLY	-	-	-	-
3	REAR TELEVISION CAMERA ASSEMBLY	86790D	-	-	-
4	INNER MIRROR CAMERA ASSEMBLY	867C0B	INFO	-	-
5	NO. 1 CAMERA CLEANER NOZZLE ASSEMBLY	867F0A	-	-	-

PROCEDURE		PART NAME CODE			
6	NO. 2 CAMERA CLEANER NOZZLE ASSEMBLY	867F0B	-	-	-

*A	w/ Rear Camera Washer	*B	w/ Digital Inner Mirror
•	Non-reusable part	-	-

PROCEDURE

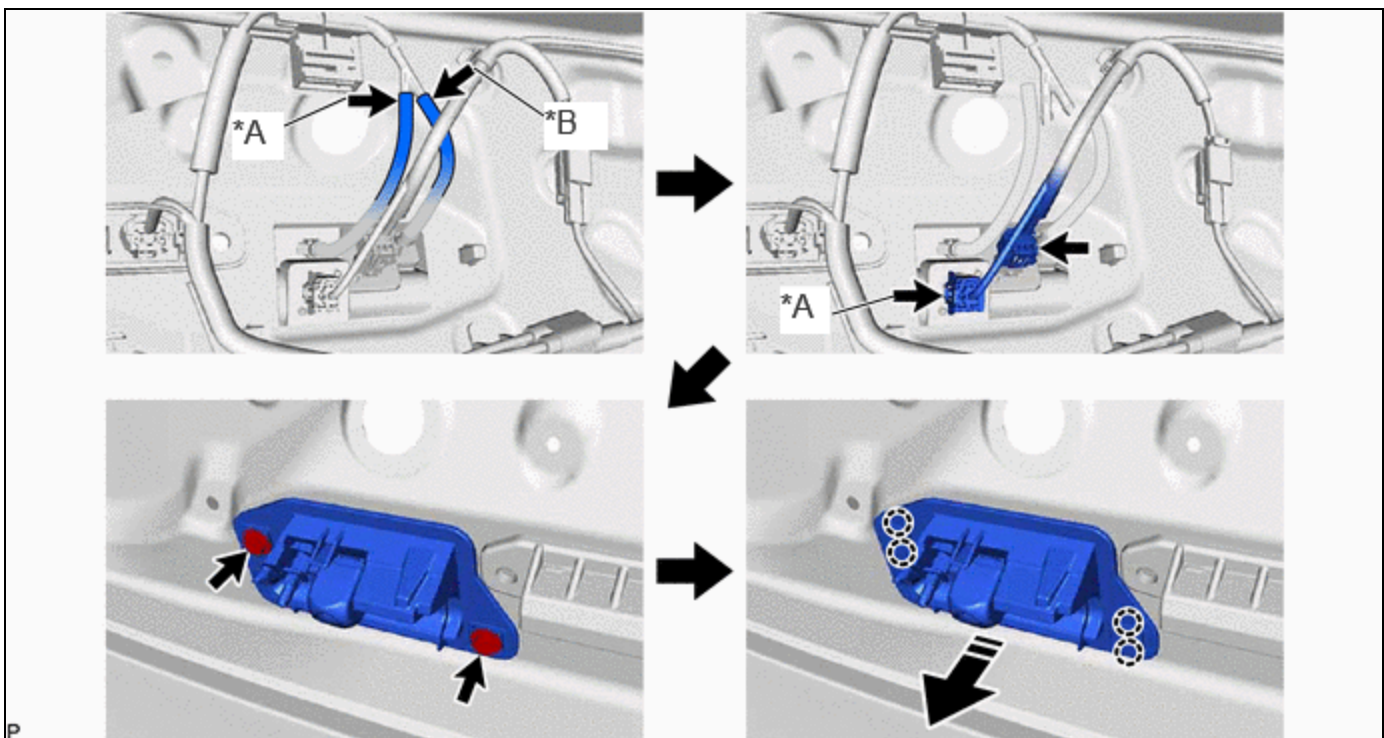
1. PRECAUTION

	<ul style="list-style-type: none"> w/ Parking Assist Monitor System: INFO w/ Parking Support Brake system: INFO w/ Panoramic View Monitor System: INFO
---	---


2. REMOVE REAR LIGHT ASSEMBLY

Click here [INFO](#)

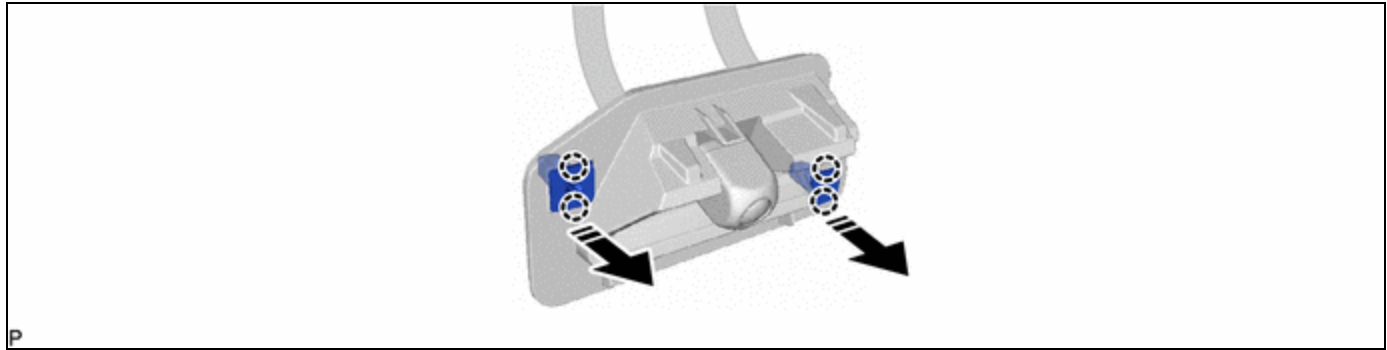
3. REMOVE REAR TELEVISION CAMERA ASSEMBLY




*A	w/ Digital Inner Mirror	*B	w/ Rear Camera Washer
----	-------------------------	----	-----------------------


	Remove in this Direction	-	-
---	--------------------------	---	---

(b) When reusing the rear television camera assembly:



	Remove in this Direction	-	-
---	--------------------------	---	---

4. REMOVE INNER MIRROR CAMERA ASSEMBLY (w/ Digital Inner Mirror)

	Click here INFO
--	---

5. REMOVE NO. 1 CAMERA CLEANER NOZZLE ASSEMBLY (w/ Rear Camera Washer)

Click here [INFO](#)

6. REMOVE NO. 2 CAMERA CLEANER NOZZLE ASSEMBLY (w/ Digital Inner Mirror)

Click here [INFO](#)

