

## Adapters for Fuel Pressure Gauge Set

If you need to check the fuel pressure on a '03 Accord, '02 Civic Si, or '02 CR-V, you're going to have a slight problem. The Fuel Pressure Gauge Set (P/N 07ZAJ-S5A0100, H/C 6612980) doesn't have the right adapters for the job. Call the folks at American Kowa Seiki at **800-824-9655**, and their Special Tool Loan Program Facilitator will send you the needed adapters. As soon as Special Tools has enough of the adapters to go around, they'll ship them to all dealers.

## Power Steering Pulley Belt Failure After S/B 02-055

When doing the repair procedure in S/B 02-055, *Safety Recall: V6 Engine Water Pump*, on a '02 Accord, '02 Odyssey, or '03 Pilot, make sure you adjust the power steering belt to the *used belt* spec when you reinstall it. If you don't, the power steering belt pulley could break.

If you refer to section 17 of the appropriate S/M, you'll notice you can adjust the power steering belt using either the Belt Tension Gauge Method or the Deflection Method.

Choose the Belt Tension Gauge Method. Using a belt tension gauge (either T/N 07JGG-010000A or 07JGG-001010A) to read the tension, adjust the belt to a tension of **390–540 N·m (88–121 lb-ft)**.

In a pinch, you can use the Belt Deflection Method. Apply a force of **98 N·m (22 lb-ft)** halfway between the pulleys, and measure its deflection. A used belt should deflect **13.0–16.5 mm (0.51–0.65 in.)**.

## Aftermarket Radio Can Damage Civic Gauge PCB

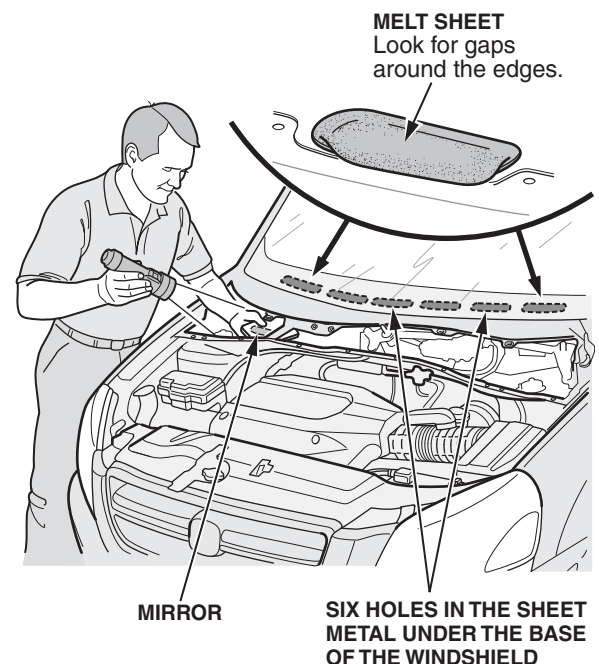
Got a smoked printed circuit board in the gauge assembly of a '01–'03 Civic? Check if there's an aftermarket radio installed. Some installers don't know what to do with the RED and RED/BLK wires in the original radio connector. Applying 12 volts to the RED wire or connecting the RED wire to the RED/BLK wire can severely damage the gauge assembly's printed circuit board. And that spells bad news for your customer since damage caused by installing an aftermarket radio isn't covered by warranty.

## Whistling From Dashboard or Windshield: '03 Pilot

On '03 Pilots, partially sealed holes between the outside and the passenger's compartment can cause a noticeable whistling from the dashboard area or windshield while driving. This noise changes when you switch the climate control from Fresh Air to Recirculation mode.

To fix this problem, do this:

1. Remove the cowl.
2. Use a mirror and a flashlight to look up at the bottom of the windshield support.



3. Look for gaps in the melt sheets covering the six holes in the sheet metal. Use your finger to push on the melt sheet.
4. Use windshield sealant to seal any gaps.
5. Reinstall the cowl.
6. Test-drive the vehicle to make sure the noise is gone.

## iN or ISIS Down? Call the Dealer Contact Center

If the Interactive Network (iN) or ISIS is down when you need it, don't fret, call the Dealer Contact Center at **800-245-4343**.

## Use '94 Accord S/M to Adjust Timing Belt Tension

To adjust timing belt tension on a '91–93 Accord or a '92–94 Prelude, use the tension adjustment procedure on page 6-20 of the 1994 Accord S/M. The tension adjustment procedures in the 1991–93 Accord and the 1992–94 Prelude S/Ms aren't correct and leave out some pertinent info. Before adjusting the belt tension, make sure you take out the spark plugs (it makes it easier to turn the crankshaft to set the belt).

Make a note on the appropriate page of these S/Ms to refer to the timing belt adjustment procedure in the '94 Accord S/M:

<b>1991 Accord S/M</b>	<b>Page 6-27</b>
<b>1992–03 Accord S/M</b>	<b>Page 6-26</b>
<b>1992–94 Prelude S/M</b>	<b>Page 6-26</b>

NOTE: You need to adjust timing belt tension only when you install or replace the belt. You don't need to adjust it during routine servicing.

## ABS Grunts When Doing a Self-Check

NOTE: This article applies to '98–03 Accords, '96–03 Civics, '00–03 S2000s, '97–01 Preludes, '00–03 Insights, '03 Pilots, '98–03 Odysseys, and '97–03 CR-Vs.

If the owner of a vehicle equipped with a “compact” ABS complains of hearing a grunt or groan when backing or moving the vehicle forward after it's been sitting awhile, it may just be the ABS doing its self-check. A compact ABS has a modulator, a pump, and an accumulator all rolled into one, and the system is designed to do a self-check when the vehicle is moved forward or backward after sitting. So the grunt is normal; it doesn't mean there's a problem with the ABS.

You can demo to your customer how this ABS self-check works by connecting the PGM Tester to the 16P data link connector, and running the function test. (This test cycles the ABS solenoid and runs the ABS pump.) The noise from the test may be louder than the noise made by the ABS self-check, but it lets your customer hear the noise and helps you determine if the noise is ABS-related or coming from another source.

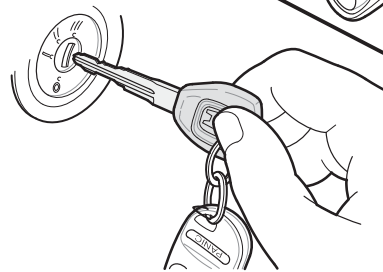
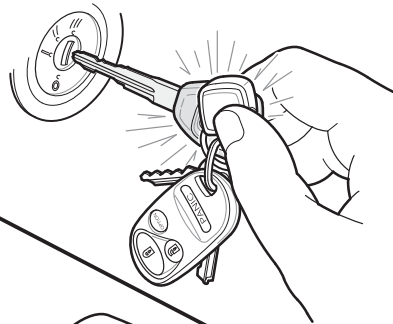
## Intermittent No-Start in Vehicles With Immobi

If you're getting complaints from owners of immobilizer-equipped vehicles that the engine doesn't crank (Preludes only) or it cranks but doesn't start, find out the key ring setup (number of keys, key ring size, key fob material) before you plow ahead with extensive diagnostics. Too much metal near the transponder in the ignition key, coupled with a quick turn of the ignition switch, can interfere with the transponder's code signal and prevent the engine from starting.

You can check if this is the problem by starting the engine with only the ignition key (that's no key ring, no other keys, and no key fob). If the engine fires up, advise your customer to keep the ignition key on a separate key ring and—if a favorite fob has got to dangle from it—to make sure the fob is made from either plastic or leather.

### INCORRECT:

Holding metal near the key.



### CORRECT:

No metal near the key.

## Missing Rear License Plate Bolts: '03 Accord, '03 Pilot

Can't find the license plate bolts during a PDI on a Japan-produced '03 Accord or a '03 Pilot? Well, they're not missing; the two **6 mm x 10 mm** bolts just weren't included in the PDI package for these vehicles.

---

## Install Wheel Bearing Correctly: '02–03 CR-V

When replacing a wheel bearing in a '02–03 CR-V, make sure you install it correctly. If you don't, these ABS DTCs can set:

- ABS DTC 12, 14, 16, 18 [wheel sensor (electrical noise/intermittent interruption)]
- ABS DTC 21, 22, 23, 24 (magnetic encoder)

The brown dust shield for the wheel bearing is also a magnetic encoder for the ABS. Before you install the wheel bearing, make sure the encoder is clean and free of metallic particles, then install it so the encoder is toward the inside of the knuckle. Install the encoder carefully so you don't damage its surface.

## Clearing ABS DTCs

NOTE: This article applies to '96 and later models with ABS.

When some ABS-equipped vehicles are run with the wheels off the ground, the ABS control unit can set a wheel sensor DTC(s) and turn on the ABS indicator. To turn off the indicator, do this:

1. Connect the PGM Tester to the 16P data link connector.
2. Clear any set DTC(s).
3. Disconnect the PGM Tester.
4. Test-drive the vehicle above **7 mph**.

When the ABS control unit gets a normal vehicle speed input from all four wheels, it completes the ABS DTC clearing procedure and turns off the ABS indicator.

## A/C Compressor Out? Check Blower Motor Operation

NOTE: This article applies to A/C-equipped '97–03 Accords, '96–03 Civics, '97–01 Preludes, '99–03 Odysseys, and '97–02 CR-Vs.

Got an A/C compressor that doesn't work? Before you start any troubleshooting, make sure the heater blower motor works at all speeds. The heater or climate control panel monitors the heater blower motor operation and doesn't let the compressor clutch engage if the blower motor isn't working properly.

## Sidewinder Locks Can't Be Rekeyed

Models with sidewinder-type lock cylinders can't be rekeyed using the current rekeying kit. If your customer wants to use just one key for the ignition and the door locks, you need to replace all the locks.

## Install Fog Lights or Outside Temp Sensor, Not Both

NOTE: This article applies to all '03 Accord models except the V6 EX.

Wondering if you can install accessory fog lights AND an accessory outside air temperature sensor on an '03 Accord? The answer is NO. The vehicle comes pre-wired from the factory for either fog lights or an outside air temperature sensor, but not both.

## Damaged Cable Reel Can Cause SRS DTCs

When troubleshooting an intermittent SRS DTC 1 (this can be any subcode) on a '97–02 Accord, '01–02 Civic, '95–03 Odyssey, '03 Pilot, or '97–03 CR-V, check the service history, warranty history, or both, to see if any repair was done that required removing the steering wheel or steering rack.

If the steering wheel or steering rack was removed, the cable reel may have been damaged. The cable reel is the only moving part in the SRS and can easily break if it's overextended.

## S/M Fix: DX Wheel Alignment Specs, '03 Accord

The Suspension table on page 2-14 of the 2003 Accord S/M has the wrong front camber spec for DX wheel alignment. The correct spec is **0° 30' ± 45'**. Make this change to your copies of the S/M. The ISIS data has already been corrected.

## Keyless Entry, Ceiling Light, Ignition Key Beeper Logic

NOTE: This article applies to '94-03 Accords, '96-03 Civics, '97-01 Preludes, '95-03 Odysseys, and '97-03 CR-Vs.

If your customer complains that his or her keyless remote transmitter doesn't work, check the ceiling light switch or the ignition key beeper before you go off troubleshooting the keyless entry system. Here's why:

**Ceiling light switch.** If a door isn't adjusted right or if a door switch is shorted, the ceiling light stays on all the time. (On Accords and Odysseys, the affected door light in the door and brake lamp monitor also comes on and stays on.) The keyless entry doesn't lock any of the doors because, electrically, it thinks a door is still open. Your customer turns off the ceiling light switch to get rid of the annoyance, and brings in the vehicle for repair thinking the keyless entry is on the fritz.

If it's a problem in the ceiling light switch circuit, you'll notice that the hatch or trunk release and the Panic feature on the remote transmitter both work.

**Ignition key reminder beeper switch.** If the ignition key reminder beeper switch is stuck or faulty, and the key reminder beeper sounds off any time there's a door open, even without a key in the ignition switch, the keyless entry doesn't lock or unlock any of the doors. This is because, electrically, it thinks there's still a key in the ignition switch.

If it's a problem in the beeper switch circuit, you'll notice that the hatch or trunk release on the remote transmitter doesn't work but the Panic feature still does.

## Don't Cross TCS and Fog Light Connectors

If the fog lights don't work on a '03 Accord V6, check if the TCS indicator comes on when you press the fog light switch. If the TCS indicator comes on, you've got a case of crossed connectors. Here's how you can tell the connectors apart:

- The TCS connector is *gray* with *four* wires (BLK, RED/WHT, RED/BLK, and RED).
- The fog light switch connector is *blue* with *five* wires (BLU, GRN, RED, RED/BLK, and BLK).

## Sports Suspension Specs: '02 Civic 2-Door

The alignment specs for the accessory sports suspension kit for the '02 Civic 2-door aren't the same as the standard alignment specs. After installing the kit, refer to this chart:

**Alignment Specs for Sports Suspension Kit**

	Front	Rear
<b>Camber</b>	-35" ± 45"	-1° 10" ± 45"
<b>Caster</b>	1° 33' ± 1°	N/A
<b>Toe</b>	0 mm ± 3 mm	In 2 mm +2 to -1 mm

## S/M Fix: Wheel Alignment Specs, '01-03 Civic

The Suspension table on page 2-19 of the 2001-03 Civic S/M has the wrong front camber spec. The correct spec is **0° 00' ± 45'**. The front caster specs also need revising. Change them to read like this:

'01-02 models: **1° 33' ± 1°**

'03 model: **2° 14' ± 1°**

## S/M Fix: Front Caster Inspection, '01-03 Civic

You need to revise the front caster angle listed on page 18-4. Change it to read like this:

**Front caster angle:**

'01-02 models: **1° 33' ± 1°**

'03 models: **2° 14' ± 1°**

## Fuel Smell While Filling Tank: '01-03 Civic GX

Revised 4-16-10

Are owners of '01-03 Civic GXs complaining of a strong fuel smell while filling the tank? The culprit may be a damaged or missing O-ring on the inlet fuel receptacle that seals the receptacle to the filling device. If you need to replace this O-ring, order P/N 91068-S1G-003, H/C 5898580, through normal parts ordering channels. Take the vehicle to a local CNG filling station when you're done to verify the repair.

---

## S/M Fix: Power Window Control Unit, '03 Pilot

The power window control unit resetting procedure on page 22-197 of the 2003 Pilot S/M has been extensively revised. Cross out the the procedure in your copies of the S/M and make a note to refer to this procedure instead.

### Resetting the power window control unit

Resetting the power window control unit is required after doing any of these actions:

- Disconnecting the battery
- Removing the No. 1 (20A) fuse from the passenger's under-dash fuse/relay box
- Disconnecting the driver's door wire harness
- Removing the driver's door panel

To reset the power window control unit, do this:

1. Make sure the glass, fuses, harnesses, and door panel are properly installed.
2. Lower the driver's window all the way by pushing down on the driver's window switch and holding it. When the window reaches the bottom, hold the switch down for **2 seconds**.
3. Raise the driver's window all the way by pulling back on the driver's window switch and holding it. When the window reaches the top, hold the switch up for **2 seconds**.

If the window does not work in AUTO, repeat steps 1 thru 3 to reset the power window master switch.

## PIB Fix: Ashtray P/N and H/C, '03 Accord

The Accessory Application Charts in Parts Information Bulletin (PIB) A02-0030, *Accessories and Touch-Up Paint - 2003 Accord Sedan*, and A02-0031, *Accessories and Touch-Up Paint - 2003 Accord Coupe*, have the wrong P/N and H/C listed for the ashtray. The P/N should be 08U25-S5D-100; the H/C should be 6615264. Correct your copies of these PIBs.

## Pick the Right Trailer Hitch Ball

When installing a trailer hitch ball on a '97-03 CR-V or '99-03 Odyssey, make sure the shank fills the hole. If the shank is too small, the nut could come loose and the trailer could unhitch. To pick the right trailer hitch ball, use this handy chart:

Ball Size	Shank Size	Ordering Info
1-7/8-inch	3/4-inch	P/N 08L92-S10-100G H/C 5862768
2-inch	3/4-inch	P/N 08L92-S10-100H H/C 5862776

## S/M Fix: Severe Maintenance Schedule, '03 Pilot

You need to fix the maintenance schedule for severe conditions on page 3-9 of the 2003 Pilot S/M. In the line item **Replace spark plugs**, the **NOTE 1** annotation is in the wrong place. It should be after the line item **Replace timing belt, and inspect water pump**. Make this change to your copies of the S/M.

## Scraping or Popping When Opening Tailgate: '03 Pilot

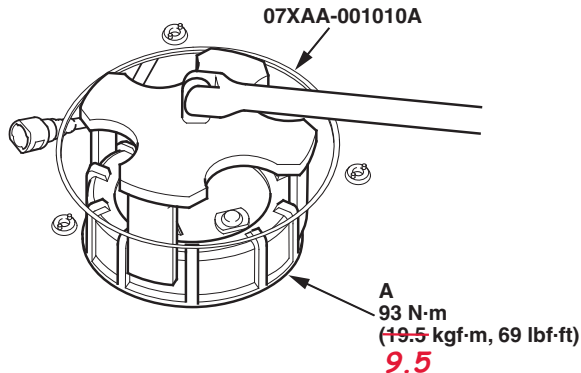
If you're getting complaints from '03 Pilot owners of hearing a scraping or popping when opening the tailgate, check to see if the tailgate spoiler is hitting the roof. This is a common problem during hot weather months.

To fix this problem, remove the spoiler, then remove the foam from under the high mount brake light. Replace that foam with a foam strip that's **6 mm x 10 mm x 150 mm**. The added thickness of the new foam raises the rear of the spoiler and pushes the forward edge down so it's at least **5 mm** lower than the roof.

## S/M Fix: Fuel Pump/Sender Replacement, '03 Accord

The illustration for step 7 on page 11-229 of the 2003 Accord S/M shows the wrong torque spec for the fuel pump/sender assembly locknut (A). Mark up your copies of the S/M to look like this:

7. Using the special tool, loosen the fuel pump/sender assembly locknut (A).

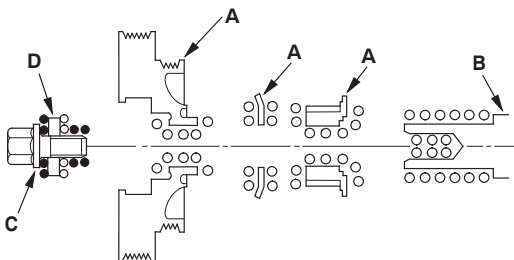


## S/M Fix: Crankshaft Pulley Installation, '03 Accord V6

The legend for the step 1 illustration on page 6-12 of the 2003 Accord V6 Supplement S/M is wrong. Mark up your copies of the S/M to look like this:

1. Remove any oil from the pulleys (A), crankshaft (B), bolt (C), and washer (D). Clean and lubricate the points shown below.

- ~~×~~ : Clean  
● ~~×~~ : Lubricate



## S/M Fix: Audio System Troubleshooting, '03 Accord

You need to fix the CD troubleshooting procedures on page 22-288 of the 2003 Accord S/M. Mark up your copies of the S/M to look like this:

### CD does not load

1. Insert the disc to see if the symptom can be duplicated.

Is it duplicated?

**Go to step 2.**

YES ~~Operation is normal. ■~~

**Operation is normal. ■**

NO ~~Go to step 2. ■~~

2. Replace the disk and check if it reappears.

Does it reappear?

**Faulty audio-HVAC-display module. ■**

YES ~~Disc failure. ■~~

**Disc failure. ■**

NO ~~Faulty audio-HVAC-display module. ■~~

### CD does not play

1. Insert the disc to see if the symptom can be duplicated.

Is it duplicated?

**Go to step 2.**

YES ~~Operation is normal. ■~~

**Operation is normal. ■**

NO ~~Go to step 2. ■~~

2. Replace the disk and check if the failure recur.

Does it recur?

**Faulty audio-HVAC-display module. ■**

YES ~~Disc failure. ■~~

**Disc failure. ■**

NO ~~Faulty audio-HVAC-display module. ■~~

**HONDA ServiceNews**

©2002 American Honda Motor Co., Inc. - All Rights Reserved. Published by AHM Service Communications, 1919 Torrance Blvd., Torrance, CA 90501-2746. All suggestions become the property of American Honda Motor Co., Inc.; sending a suggestion gives Honda permission to publish it without further consideration.



ASN 24696-43761 (1004)