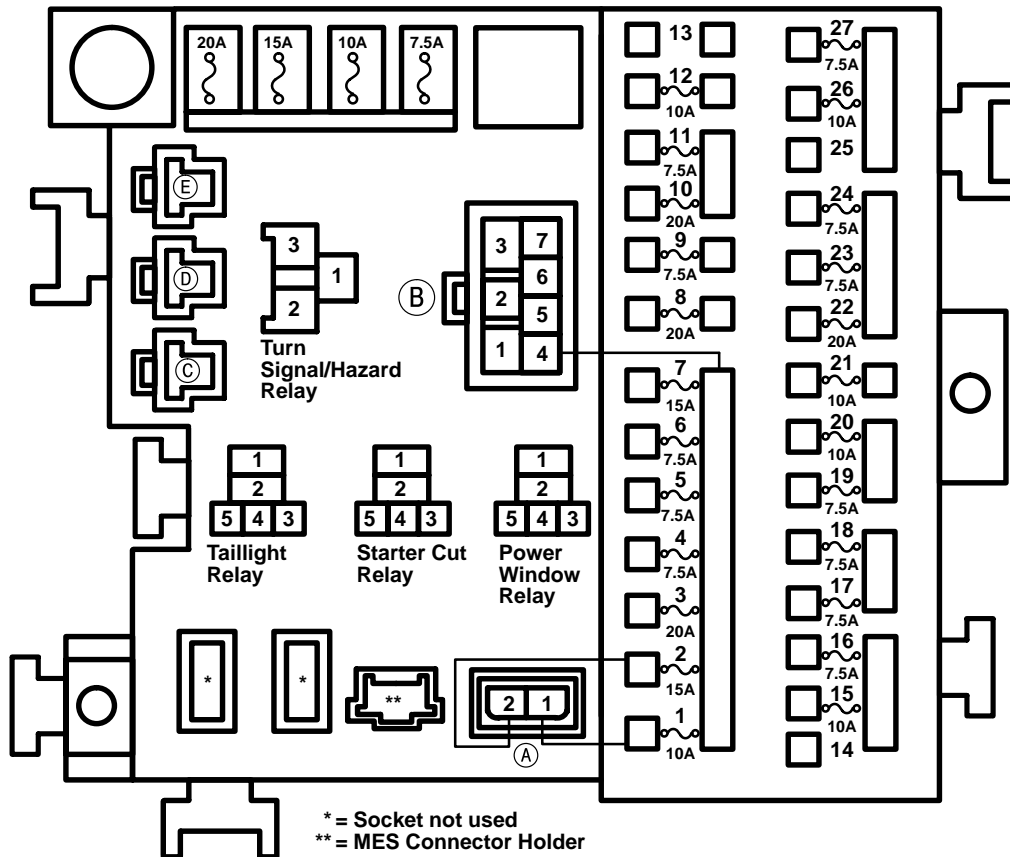




# Connector Views

## 174. Under-dash Fuse/Relay Box

– Upper left kick panel area



### Connector A

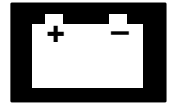
- Male: In fuse/relay box
- Female: Yellow
- Connects under-dash fuse/relay box to floor wire harness

- 1 PNK or BLU (Fuse 1 – Under-dash)
- 2 BLK/RED or BLU (Fuse 2 – Under-dash)

### Connector B

- Male: In fuse/relay box
- Female: Brown
- Connects under-dash fuse/relay box to ignition switch harness

- 1 BLK/WHT (Ignition switch – START input)
- 2 —
- 3 WHT (Ignition switch – Fuse 1 input)
- 4 Male – Fuse/relay box internal connection (Busbar – Fuses 1 through 7)  
Female – BLK/YEL (Ignition switch -ON or START output)
- 5 Male – YEL/BLK  
Female – YEL (Ignition switch – ACC or ON input: Fuses 16 and 17 and connections)
- 6 Male – WHT/RED  
Female – WHT/BLK (Ignition switch – ON input: Fuses 11 and 12 and connections)
- 7 Male – Fuse/relay box internal connection (Busbar – Fuses 24 through 27)  
Female – BLK/YEL (Ignition switch – ON or START output)



# Connector Views

## 174. Under-dash Fuse/Relay Box

– Upper left kick panel area

### Connector C

– Option connector

- 1 Male – YEL/BLK (Ignition switch – ACC or ON output)
- Female – —

### Connector D

– Option connector

- 1 Male – YEL
- Female – —
- (Fuse 16)

### Connector E

– Option connector

- 1 Male – WHT/RED (Ignition switch – ON output)
- Female – —

### Relays

- Black
- Dashboard wire harness B (left branch)

### Power Window Relay:

- 1 PNK/BLU (Power window output)
- 2 WHT/BLK (Fuse 17)
- 3 BLK (G401)
- 4 —
- 5 YEL (Fuse 6 – Under-dash)

### Starter Cut Relay:

- 1 BLK/RED (Start output)
- 2 BLK/WHT (Ignition START input)
- 3 BLU/WHT (Starting system)
- 4 —
- 5 BLU/ORN (Fuse 9 – Under-dash)

### Taillight Relay:

- 1 YEL (Fuse 16)
- 2 RED/WHT, RED/WHT (Taillight relay output)
- 3 BLU (Headlight or parking light request)
- 4 —
- 5 YEL (Fuse 16)

### Turn Signal/Hazard Relay:

- 1 BLK/RED, BLK/RED (Turn signal/hazard power supply)
- 2 GRN/WHT (Ignition ON or hazard switch ON input)
- 3 BLK (G401)

### Fuses

- 1 Internal connection—10A—internal connection
- 2 Internal connection—15A—internal connection
- 3 GRN/BLK—20A—internal connection
- 4 BLK/YEL—7.5A—internal connection
- 5 YEL/BLK—7.5A—internal connection
- 6 YEL—7.5A—internal connection
- 7 BLK/WHT—15A—internal connection
- 8 GRN/BLK—20A—PNK/BLU
- 9 BLU/ORN—7.5A—BLK/WHT
- 10 GRN/WHT—20A—WHT/BLK
- 11 YEL/RED—7.5A—WHT/RED
- 12 YEL/BLU—10A—WHT/RED
- 13 —
- 14 WHT/RED—20A—YEL (CVT)
- 15 RED/BLK—10A—RED/WHT
- 16 BLK/YEL—7.5A—YEL/BLK
- 17 YEL/RED—7.5A—YEL/BLK (Canada)
- 18 WHT/RED—7.5A—YEL
- 19 WHT/BLU—7.5A—YEL
- 20 WHT—10A—YEL
- 21 RED/BLU—10A—YEL (Canada)
- 22 WHT—20A—YEL
- 23 BLU/YEL—7.5A—YEL
- 24 BLK/YEL—7.5A—GRN
- 25 — 7.5A—GRN
- 26 GRN—10A—GRN
- 27 YEL/RED—7.5A—GRN