



Navigation Tools: Click on the “Table of Contents” below, or use the Bookmarks to the left.

## **Maintenance**

**Lubricants and Fluids** .....3-2

### **Maintenance Minder**

General Information . .....3-4

Maintenance Main Items . ..... 3-7

Maintenance Sub Items . .....3-8

# Lubricants and Fluids

For the details of the lubrication points and the type of lubricants to be applied, refer to the illustrated index and the various work procedures (such as Assembly/Reassembly, Replacement, Overhaul, Installation, etc.) contained in each section.

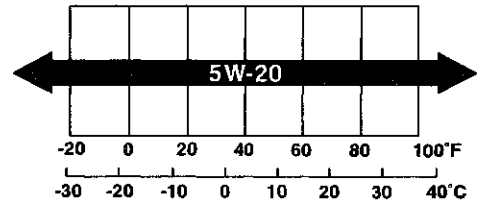
Application		Lubricant of Fluid
A	Engine	Honda Motor Oil: American Honda P/N 08798-9023 (5W-20) Honda Canada P/N CA66806 (5W-20) Look for the API certification seal on the oil container. Make sure it says "For Gasoline Engine." SAE Viscosity: See chart.
B	Manual Transmission	Honda Manual Transmission Fluid (MTF): American Honda P/N 08798-9031 Honda Canada P/N 08798-9031C Always use Honda MTF. Using motor oil can cause stiffer shifting because it does not contain the proper additives.
	Automatic Transmission	Honda Automatic Transmission Fluid (ATF-Z1): American Honda P/N 08200-9001 Honda Canada P/N CA66689 Always use Honda ATF-Z1. Using a non-Honda ATF can affect shift quality.
C	Brake system (including VSA lines)	Honda DOT 3 Brake Fluid: P/N 08798-9008 Always use Honda DOT 3 Brake Fluid. Using a non-Honda brake fluid can cause corrosion and decrease the life of the system.
D	Clutch system (manual transmission)	
E	Shift lever (manual transmission)	Super High Temp Urea Grease: P/N 08798-9002
F	Brake booster clevis pin	Multipurpose Grease
G	Clutch master cylinder clevis pin (manual transmission)	
H	Release fork (manual transmission)	
I	Battery terminals	
J	Hood hinges and hood latch	
K	Fuel fill door	
L	Trunk hinges	
M	Shift cable ends (manual transmission)	Honda Silicone Grease: P/N 08C30-B0234M
N	Caliper piston boots, caliper piston seals, caliper pins, and caliper pin boots	
O	Power steering system	Honda Power Steering Fluid: American Honda P/N 08206-9002 Honda Canada P/N 08206-9002C Always use Honda Power Steering Fluid. Using any other type of power steering fluid or automatic transmission fluid can cause increased wear and poor steering in cold weather.
P	Air conditioning compressor	Compressor Oil: DENSO ND-OIL 8 (P/N 38897-PR7-A01AH or 38899-PR7-A01) for refrigerant HFC-134a (R-134a)
Q	Coolant system	Honda Long Life Antifreeze/Coolant-Type 2: P/N OL999-9001 Honda Extreme Cold Weather Antifreeze/Coolant Type 2: P/N OL999-9020



**API CERTIFICATION SEAL**

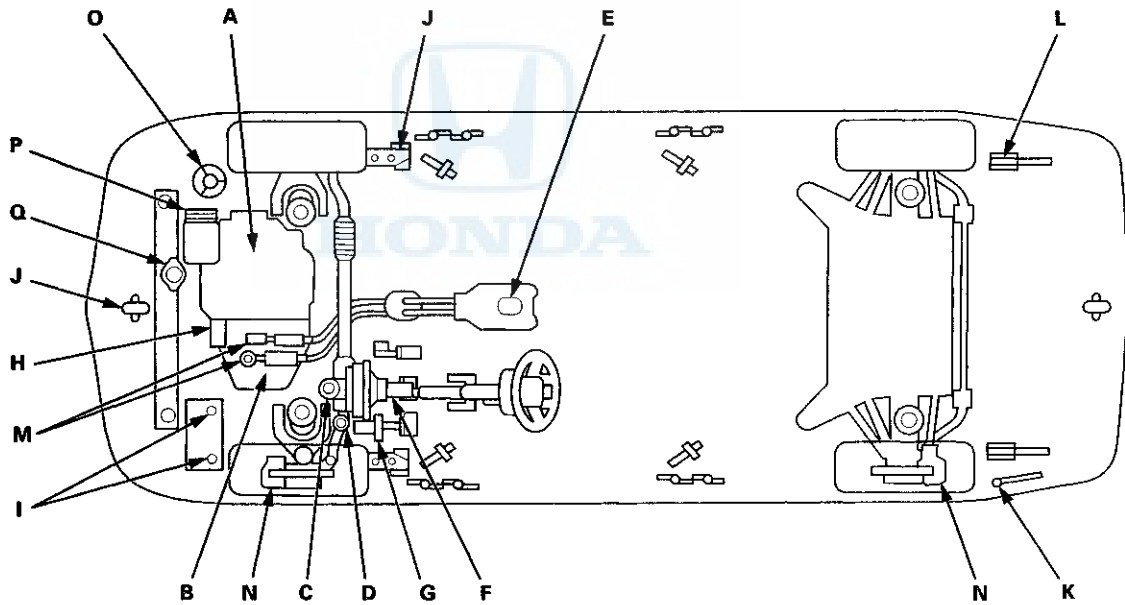


**Recommended Engine Oil**  
Engine oil viscosity for ambient temperature ranges



**NOTE:**

- Lubricate the following areas using the recommended lubricants and fluids.
- In corrosive areas, more frequent lubrication is necessary.



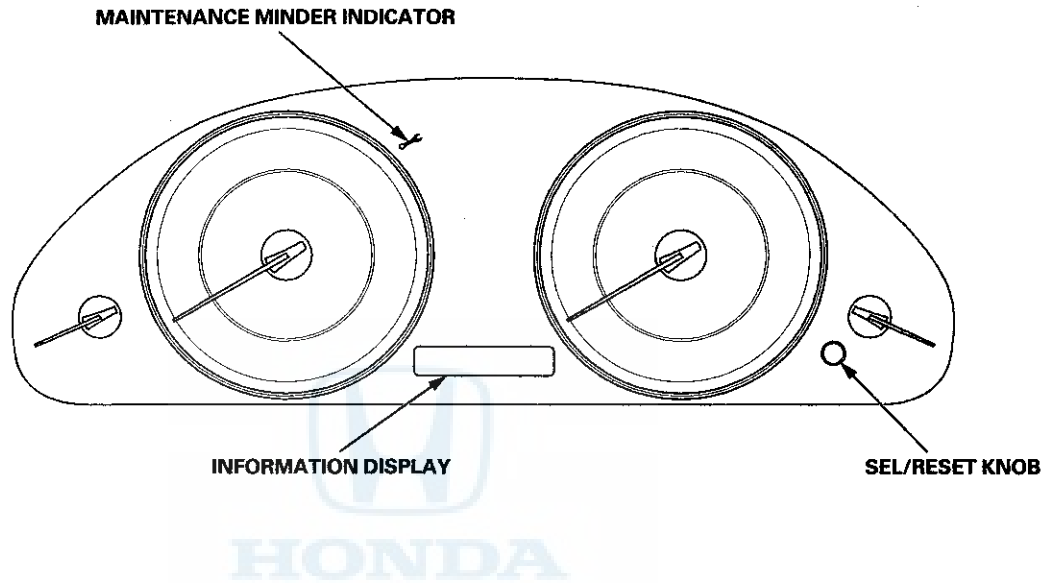
# Maintenance Minder

---

## General Information

### Maintenance Display

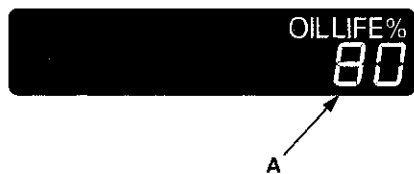
The maintenance minder is an important feature of the information display. Based on engine and transmission operating conditions, the Accord's onboard computer (ECM/PCM) calculates the remaining engine oil and the transmission fluid life. The system also displays the remaining engine oil life along with the code(s) for other scheduled maintenance items needing service.





### Service Information

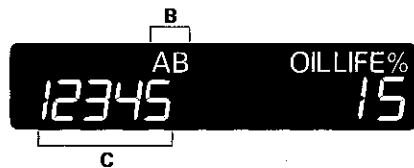
1. The remaining engine oil life on the engine oil life indicator (A) is displayed as a percentage on the information display. To see the current engine oil life, turn the ignition switch to ON (II), then push and release the SEL/RESET knob repeatedly until the engine oil life is displayed.



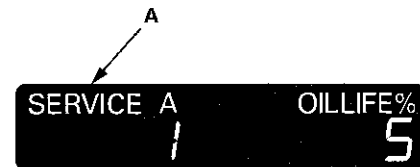
2. When the remaining engine oil life is 15 % to 6 %, the engine oil life indicator will be displayed for several seconds when the ignition switch is ON (II).

The maintenance minder indicator (A) will also come on, and the maintenance item code(s) for other scheduled maintenance items needing service will appear in the information display.

- Complete list of maintenance main items (B) (see page 3-7).
- Complete list of maintenance sub items (C) (see page 3-8).



3. When the remaining engine oil life is 5 % to 1 %, the maintenance message "SERVICE" (A) appears along with the same maintenance item code(s), when the ignition switch is ON (II).



4. When the remaining engine oil life is 0 %, the engine oil life indicator blinks.

This display comes on when the ignition switch is ON (II). At this point, the indicated maintenance must be done as soon as possible.



5. If the indicated maintenance is not done, the engine oil life indicator shows a negative mileage, for example "- 10" blinking on the display. A negative mileage will display after the vehicle is driven 10 miles (for USA models) or 10 km (for Canada models) after the display begins to blink.

This means that the indicated maintenance item should have been done 10 miles (for USA models) or 10 km (for Canada models) ago.



(cont'd)

# Maintenance Minder

## General Information (cont'd)

### Resetting the Maintenance Information Display

**NOTE:**

- The vehicle must be stopped to reset.
- If the required service is done and the display is not reset, or if the display is reset without doing the service, the system will not show the proper maintenance timing. This can lead to serious mechanical problems because there will be no record of when maintenance is needed.

1. Turn the ignition switch ON (II).
2. If oil life is more than 15 %, press the SEL/RESET knob repeatedly until the engine oil life is displayed.
3. Press the SEL/RESET knob for about 10 seconds. The engine oil life and the maintenance item code(s) will blink.

**NOTE:** If you are resetting the display when the engine oil life is more than 15 %, make sure the maintenance items requiring service have been done before resetting this display.

4. Press the SEL/RESET knob for another 5 seconds. The maintenance item code(s) will disappear and the engine oil life will reset to "100."



### Resetting Individual Maintenance Items

1. Connect the Honda Diagnostic System (HDS) to the data link connector (DLC) (see step 2 on page 11-3).
2. Turn the ignition switch to ON (II).
3. Make sure the HDS communicates with the vehicle and the engine control module/powertrain control module (ECM/PCM). If it doesn't communicate, troubleshoot the DLC circuit (see page 11-181).
4. Select GAUGES in the BODY ELECTRICAL with the HDS.
5. Select ADJUSTMENT in the GAUGES with the HDS.
6. Select SERVICE REMINDER in the ADJUSTMENT with the HDS.
7. Select RESET in the SERVICE REMINDER with the HDS.
8. Select the individual maintenance item you wish to reset.



## Maintenance Main Items

If message "SERVICE" does not appear more than 12 months after the display is reset, change the engine oil every year.

**NOTE:**

- Independent of the maintenance messages in the smart maintenance display, replace the brake fluid every 3 years.
- Inspect idle speed every 160,000 miles (256,000 km).
- Adjust the valves during services A, B, 1, 2, or 3 if they are noisy.

Symbol	Maintenance Main Items
A	Replace engine oil (see page 8-11) Engine oil capacity without oil filter. <ul style="list-style-type: none"> <li>• '08-09 models: 4.0 L (4.2 US qt)</li> <li>• '10 model: 3.8 L (4.0 US qt)</li> </ul>
B	Replace engine oil and oil filter (see page 8-12) Engine oil capacity with oil filter. <ul style="list-style-type: none"> <li>• '08-09 models: 4.2 L (4.4 US qt)</li> <li>• '10 model: 4.0 L (4.2 US qt)</li> </ul>
	Check front and rear brakes (see page 19-3) <ul style="list-style-type: none"> <li>• Check pads and discs for wear (thickness), damage, and cracks.</li> <li>• Check calipers for damage, leaks, and tightness of mounting bolts.</li> </ul>
	Check parking brake adjustment (see page 19-8) Check the number of clicks (7 to 9) when the parking brake lever is pulled with 196 N (20 kgf, 44 lbf) of force.
	Inspect tie-rod ends, steering gearbox, and gearbox boots (see page 17-5) <ul style="list-style-type: none"> <li>• Check steering linkage.</li> <li>• Check boots for damage and leaking grease.</li> <li>• Check fluid lines for damage or leaks.</li> </ul>
	Inspect suspension components (see page 18-3) <ul style="list-style-type: none"> <li>• Check bolts for tightness.</li> <li>• Check condition of ball joint boots for deterioration and damage.</li> </ul>
	Inspect driveshaft boots (see page 16-4) Check boots for cracks and boot bands for tightness.
	Inspect brake hoses and lines including VSA lines (see page 19-46) Check the master cylinder and VSA modulator-control unit for damage and leakage.
	Inspect all fluid levels and condition of fluids <ul style="list-style-type: none"> <li>• Engine coolant (see page 10-6)</li> <li>• Clutch fluid (see page 12-6)</li> <li>• Manual transmission fluid (MTF) (see page 13-5)</li> <li>• Automatic transmission fluid (ATF) (see page 14-191)</li> <li>• Power steering fluid (see page 17-28)</li> <li>• Brake fluid (see page 19-9)</li> <li>• Windshield washer fluid</li> </ul>
	Inspect exhaust system* (see page 9-9) Check catalytic converter heat shields, exhaust pipes, and muffler for damage, leaks, and tightness.
	Inspect fuel lines* (see page 11-310) and connections* (see page 11-313) Check for loose connections, cracks, and deterioration; retighten loose connections and replace damaged parts.

NOTE: According to state and federal regulations, failure to do the maintenance items marked with an asterisk (\*) will not void the customer's emissions warranties. However, Honda recommends that all maintenance services be done at the recommended interval, to ensure long-term reliability.

# Maintenance Minder

## Maintenance Sub Items

Number	Maintenance Sub Items
1	Rotate tires, and check tire inflation and condition Follow the pattern shown in the Owner's Manual.
2	Replace air cleaner element (see page 11-333) If the vehicle is driven primarily in dusty conditions, replace every 15,000 miles (24,000 km). Replace dust and pollen filter (see page 21-79) <ul style="list-style-type: none"> <li>• If the vehicle is driven mostly in areas that have high concentrations of dust, pollen, or soot in the air, replace every 15,000 miles (24,000 km).</li> <li>• Replace the filter whenever airflow from the heating and air conditioning system is less than normal.</li> </ul> Inspect drive belt (see page 4-29) Look for cracks and damage, then check the position of the drive belt auto-tensioner indicator.
3	Replace manual transmission fluid (MTF) (see page 13-5) Capacity: 1.9 L (2.0 US qt); use Honda MTF. Replace automatic transmission fluid (ATF) (see page 14-192) <ul style="list-style-type: none"> <li>• Capacity: 2.5 L (2.6 US qt); use Honda ATF-Z1.</li> <li>• Driving in mountainous areas at very low vehicle speeds results in higher transmission temperatures. This requires transmission fluid changes more frequently than recommended by the maintenance minder. If the vehicle is regularly driven under these conditions, change the transmission fluid at 60,000 miles (100,000 km), then every 30,000 miles (48,000 km).</li> </ul>
4	Replace spark plugs (see page 4-20) <ul style="list-style-type: none"> <li>• Use ILZKR7B-11S (NGK) or SXU22HCR11S (DENSO) for all models except PZEV.</li> <li>• Use DILZKR7A11GS (NGK) for PZEV.</li> </ul> Inspect valve clearance (cold) <ul style="list-style-type: none"> <li>• Except PZEV model (see page 6-9)</li> <li>• PZEV model (see page 6-58)</li> </ul> Intake: 0.21–0.25 mm (0.008–0.010 in), Exhaust: 0.25–0.29 mm (0.010–0.011 in).
5	Replace engine coolant (see page 10-6) Capacity (including reservoir/DENSO): <ul style="list-style-type: none"> <li>• M/T 6.1 L (1.61 US gal)</li> <li>• A/T 6.0 L (1.59 US gal)</li> </ul> Capacity (including reservoir/TRAD): <ul style="list-style-type: none"> <li>• M/T 6.0 L (1.59 US gal)</li> <li>• A/T 5.9 L (1.56 US gal)</li> </ul> Use Honda Long Life Antifreeze/Coolant Type 2, and add Honda Extreme Cold Weather Antifreeze/Coolant Type 2 in severe cold temperature.





## **SUPPLEMENTAL RESTRAINT SYSTEM (SRS) (If engine electrical maintenance is required)**

The Accord SRS includes a driver's airbag in the steering wheel hub, a passenger's airbag in the dashboard above the glove box, seat belt tensioners in the front seat belt retractors, side curtain airbags in the sides of the roof, and side airbags in the front seat-backs. Information necessary to safely service the SRS is included in this Service Manual. Items marked with an asterisk (\*) on the contents page include or are located near SRS components. Servicing, disassembling, or replacing these items requires special precautions and tools, and should be done by an authorized Honda dealer.

- To avoid rendering the SRS inoperative, which could lead to personal injury or death in the event of a severe frontal or side collision, all SRS service work should be done by an authorized Honda dealer.
- Improper service procedures, including incorrect removal and installation of the SRS, could lead to personal injury caused by unintentional deployment of the airbags, side airbags, and/or side curtain airbags.
- Do not bump or impact the SRS unit, front impact sensors, side impact sensors, or rear safing sensor, especially when the ignition switch is in ON (II), or for at least 3 minutes after the ignition switch is turned to LOCK (0); otherwise, the system may fail in a collision, or the airbags may deploy.
- SRS electrical connectors are identified by yellow color coding. Related components are located in the steering column, center console, dashboard, dashboard lower cover, in the dashboard above the glove box, in the front seats, in the roof side, and around the floor. Do not use electrical test equipment on these circuits.